

Frank Harris — & Co. —



Bridgewater Square, City of London, EC2Y

£740,000

This peaceful three-bedroom apartment overlooks Bridgewater Square and the Barbican wildlife garden on Fann Street. There are two double bedrooms with built-in wardrobes, a single bedroom with built-in storage, a reception room, an en-suite shower room in the primary bedroom, a separate bathroom and fully fitted kitchen.



Bridgewater House, with its elegant reception area, has a porter and the Square itself is a quiet and secluded area just a short walk from Barbican station. An ideal location for the Culture Mile, with convenient access to the Barbican Arts Centre together with Clerkenwell and Smithfield with their vibrant and varied restaurants and bars.

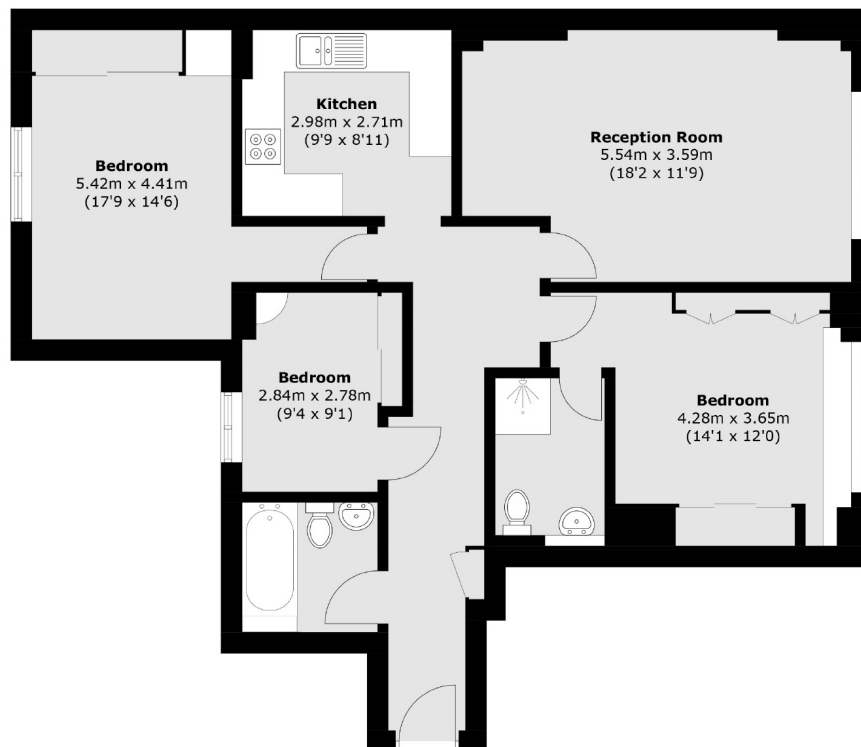
The location benefits from superb transport links, with Barbican, Farringdon, Moorgate and St Paul's stations all being close by. Liverpool Street station is a mere 15 minute walk away. Thameslink services from Farringdon give direct access to Gatwick and Luton airports, and the Elizabeth line direct, fast access to Canary Wharf, Heathrow and Bond Street.

- Three Bedrooms • Long Lease • 3rd Floor •
- Quiet Location • Daytime Concierge • No Onward Chain •



Frank Harris

& Co.



Total area (approx.): 82.7 sq. m (890.2 sq. ft)

Frank Harris & Co. Barbican and City
87 Long Lane, London,
EC1A 9ET
020 7600 7000
citysales@frankharris.co.uk

Energy Rating: C. We aim to make our particulars both accurate and reliable. However they are not guaranteed; nor do they form part of an offer or contract. If you require clarification on any points then please contact us, especially if you're traveling some distance to view. Please note that appliances and heating systems have not been tested and therefore no warranties can be given as to their good working order.

