

# Frank Harris & Co.



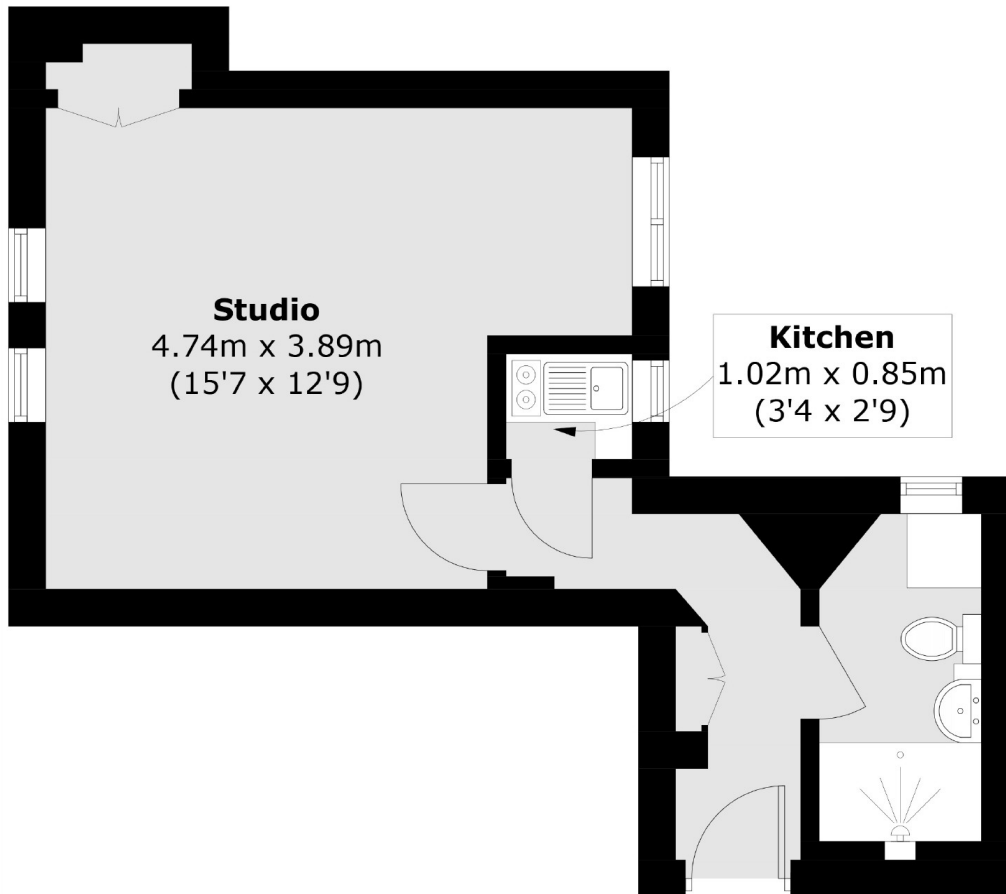
## Crane Court, City of London, EC4A

£375,000

Situated in a quiet location, close to The Strand and the Royal Courts of Justice, a charming studio apartment with a long lease. The main studio room has a storage cupboard and a recessed area for a bed or alternatively a sofa bed could be used. The window overlooks Crane Court which is a quiet street behind Fetter Lane. There is a shower room with a washing machine which was refurbished in the last two years. The kitchenette has a fridge, two ring hob, wash basin and small cupboard.

Crane Court is located just behind Fetter Lane, between Fleet Street and Holborn Circus. Nearest transport links are at Chancery Lane, City Thameslink and Blackfriars stations.

# Frank Harris & Co.



## Raised Ground Floor

Total area (approx.): 26.3 sq. m (283.1 sq. ft)

Frank Harris & Co. Barbican and City  
87 Long Lane, London,  
EC1A 9ET  
020 7600 7000  
citysales@frankharris.co.uk

Energy Rating: C. We aim to make our particulars both accurate and reliable. However they are not guaranteed; nor do they form part of an offer or contract. If you require clarification on any points then please contact us, especially if you're traveling some distance to view. Please note that appliances and heating systems have not been tested and therefore no warranties can be given as to their good working order.

