

Frank Harris & Co.



Smithfield, City of London, EC1A

£1,600 Per week

A completely restored old warehouse building, set over six levels offering a unique, versatile loft-style living space in a wonderfully atmospheric location within the City of London. Available now.



Set over approximately 214 sq.m, this property has a classic warehouse interior with exposed original brickwork, fireplaces and hardwood floors, large Crittall type windows, a professional standard stainless steel kitchen and an open-plan layout.

On the top floor there are two terraces offering views over the local neighbourhood and landmarks.

Middle Street is one of the ancient, narrow City side streets between West Smithfield and Aldersgate Street. Local transport is literally round the corner at Barbican, Farringdon and St. Paul's stations.

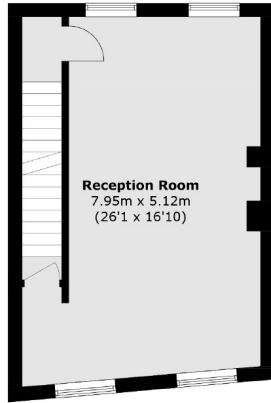
- House • Six Storeys • Loft Style Living Space •
- High Quality Fittings • Historic Location • Unfurnished •



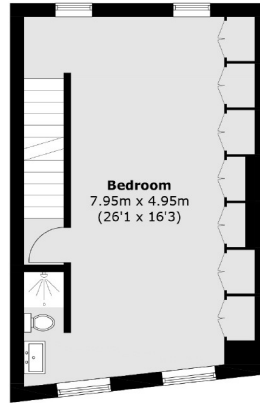




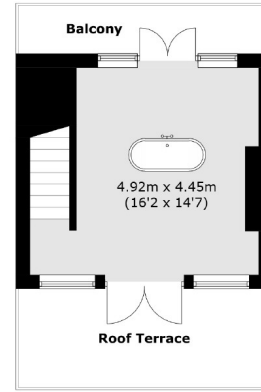
Frank Harris & Co.



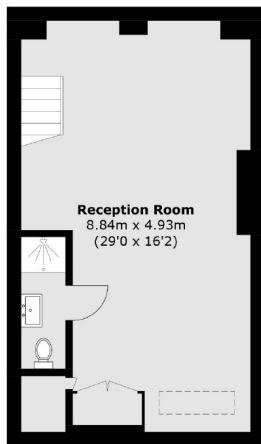
Second Floor



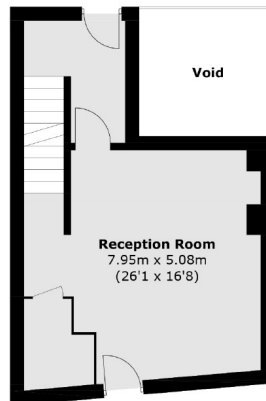
Third Floor



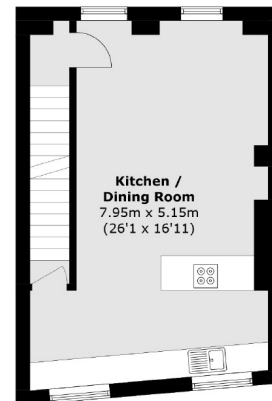
Fourth Floor



Lower Ground Floor



Ground Floor



First Floor

Total area (approx.): 214.1 sq. m (2304.4 sq. ft)
Roof Terrace / Balcony areas : 17.1 sq. m (184.0 sq. ft)

Frank Harris & Co. Barbican and City
87 Long Lane, London,
EC1A 9ET
020 7601 1919
citylettings@frankharris.co.uk

Energy Rating: C. We aim to make our particulars both accurate and reliable. However they are not guaranteed; nor do they form part of an offer or contract. If you require clarification on any points then please contact us, especially if you're traveling some distance to view. Please note that appliances and heating systems have not been tested and therefore no warranties can be given as to their good working order.

