

Frank Harris & Co.



Spencer Heights, Bartholomew Close, EC1A

£595,000

This is a one bedroom apartment offering charm and appeal as well as a central location within the City of London. The flat is situated on the 4th floor with daytime porter between West Smithfield and St. Pauls. Internal accommodation comprises: reception room with wood floors, open-plan fitted kitchen equipped with all appliances, double bedroom which has access onto a small balcony and fully tiled contemporary bathroom. Secure parking space below the building.



The immediate area boasts a good selection of restaurants and shopping can be found close by at St Pauls along with a large Waitrose store nearby. Bartholomew Close is a short walk away from the bars and restaurants of West Smithfield including Club Gascon & Smiths of Smithfield. This fascinating area has been the setting for countless film and television productions over the years and makes for a brilliant place both to wander around and to soak up the local history.

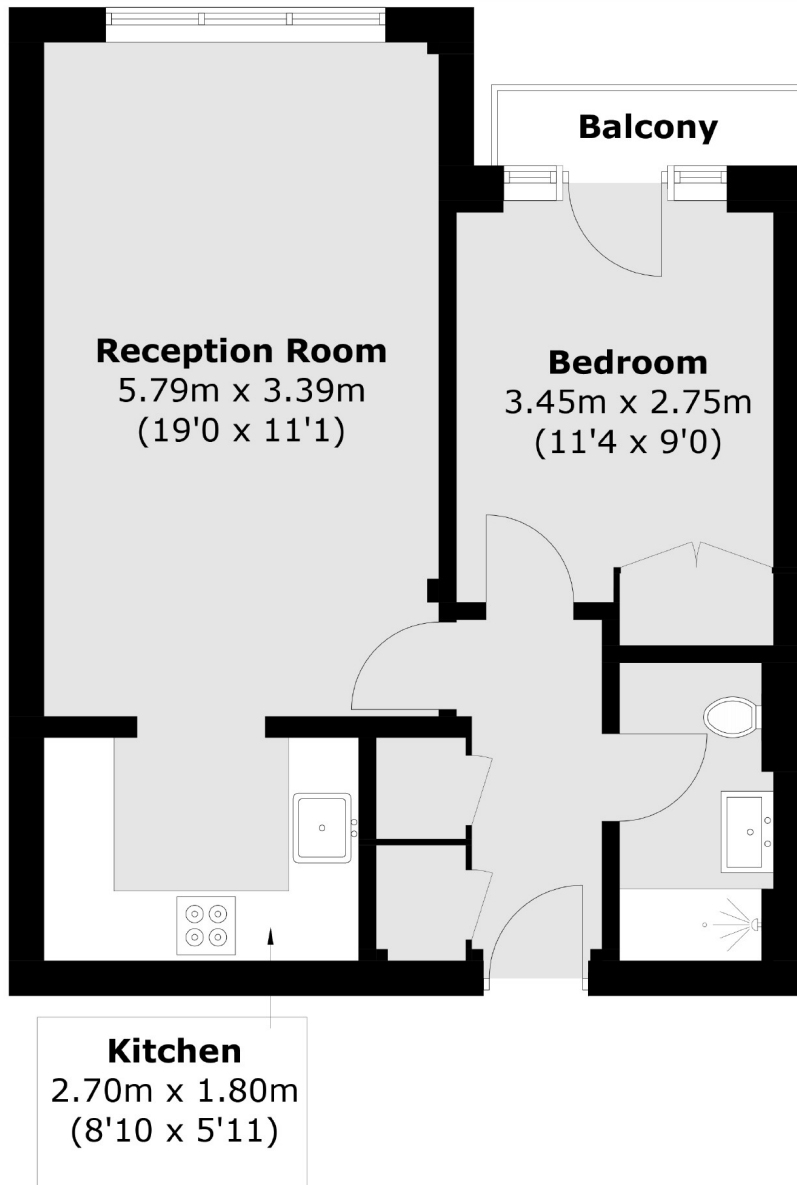
EWS1 Compliant

The location benefits from superb transport links, with Barbican, Farringdon and St Pauls stations all close by with access to the Elizabeth Line, Circle, Hammersmith and City, Metropolitan Line and Thameslink.

- One bedroom flat • Balcony • Portered building •
- Parking space • No onward chain • Conservation area •



Frank Harris & Co.



Total area (approx.): 45.7 sq. m (491.9 sq. ft)
Balcony : 1.7 sq. m (18.6 sq. ft)

Frank Harris & Co. Barbican and City
87 Long Lane, London,
EC1A 9ET
020 7600 7000
citysales@frankharris.co.uk

Energy Rating: . We aim to make our particulars both accurate and reliable. However they are not guaranteed; nor do they form part of an offer or contract. If you require clarification on any points then please contact us, especially if you're traveling some distance to view. Please note that appliances and heating systems have not been tested and therefore no warranties can be given as to their good working order.

