

Frank Harris & Co.



Norfolk House, EC4V

£1,558 Per week

South-west facing, this luxury three double bedroom apartment is situated on the river directly opposite the Tate Modern and facing the Millennium Bridge. There are two balconies, the property is recently refurbished and it is available to rent furnished immediately.



Norfolk House is located on the river just next to St. Pauls and the nearest underground stations are Mansion House, Blackfriars and St Pauls which are all a quarter of a mile away.

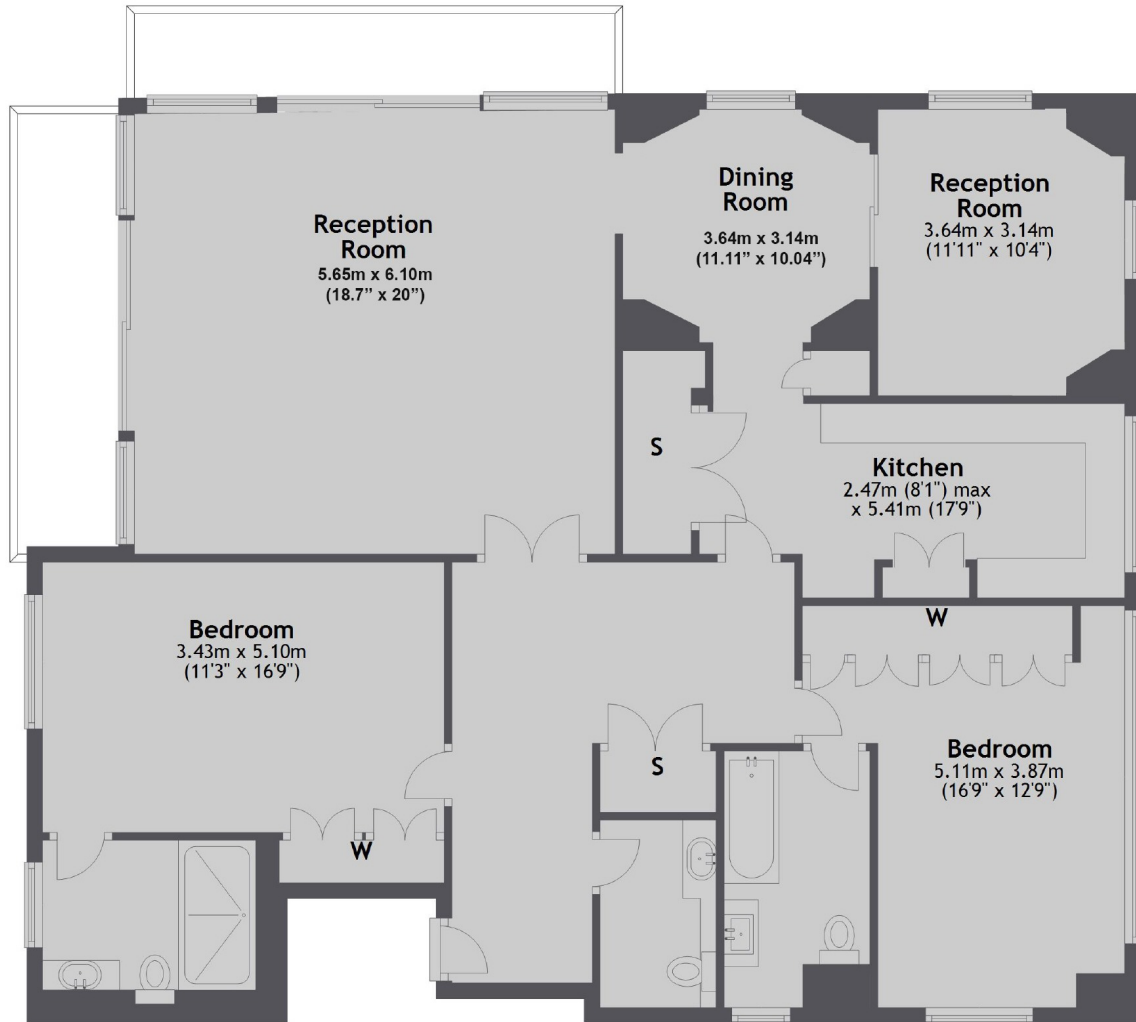
- Two/Three Bedrooms • Dual Aspect • High Quality Interior •
- Overlooking the Thames • Two Balconies • Furnished •







Frank Harris & Co.



Second Floor

Total area: approx. 145.8 sq. metres (1569.4 sq. feet)

Frank Harris & Co. Barbican and City
87 Long Lane, London,
EC1A 9ET
020 7601 1919
citylettings@frankharris.co.uk

Energy Rating: C. We aim to make our particulars both accurate and reliable. However they are not guaranteed; nor do they form part of an offer or contract. If you require clarification on any points then please contact us, especially if you're traveling some distance to view. Please note that appliances and heating systems have not been tested and therefore no warranties can be given as to their good working order.

