

# Frank Harris & Co.



## Gilbert House, Barbican, EC2Y

£950,000

A rare Gilbert House original. This large one bedroom flat, known as a Type 31H is presented in excellent order. The same family has owned the flat since the Barbican was built and has preserved all the original features in the galley kitchen, including the stainless steel worktop and cupboards. The bathroom has the original bath and tiled vanity unit. The flat overlooks the Barbican lake and enjoys the morning sun from the east aspect. Extended lease.



Gilbert House is arguably one of the most sought after blocks on the Barbican estate, sitting above the lake and located next to the restaurants and arts centre.

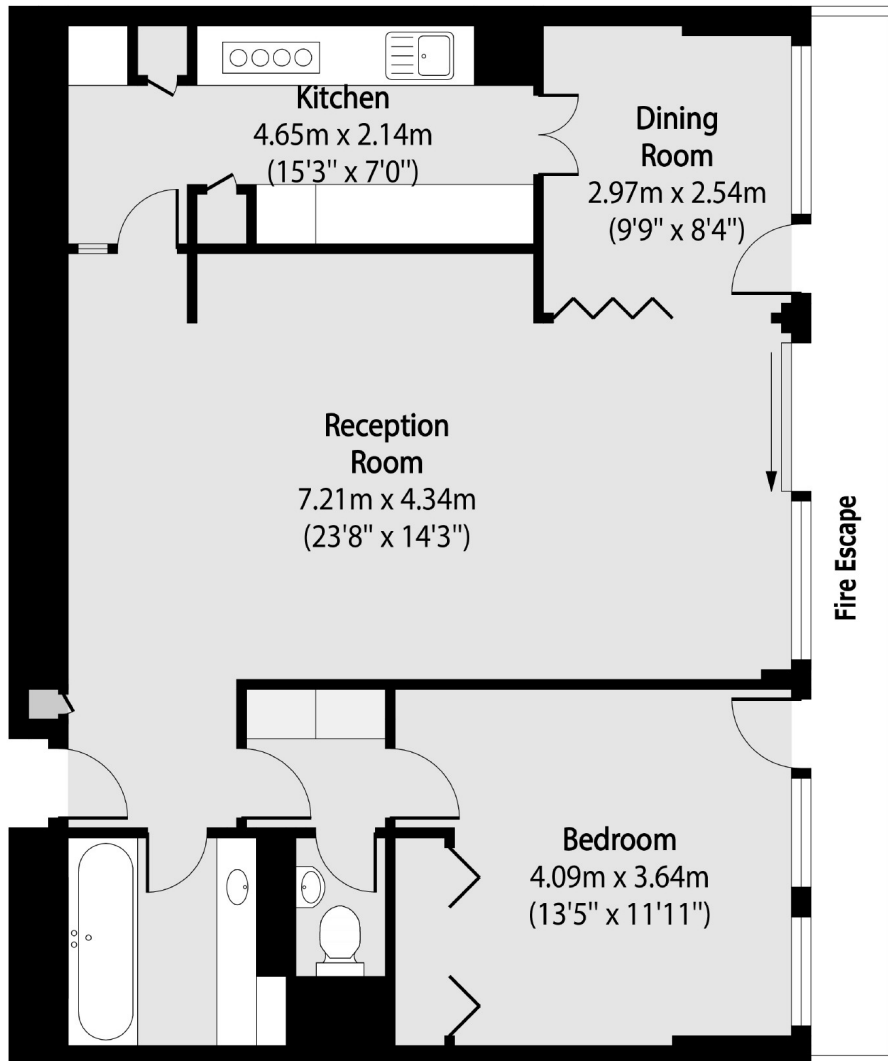
Set in a tranquil location in the middle of the Barbican estate away from all the main roads and surrounded by the Barbican lake is this spacious one bedroom apartment. The large L-shaped reception room has ample space for dining next to the galley kitchen with the original concertina divider.

Local transport links are superb with both Barbican, Moorgate and Farringdon Stations a short walk away offering easy and quick access to the City's financial district as well as London's West End. Farringdon Station offers access to the Elizabeth Line, Hammersmith and City, Circle, Metropolitan and Thameslink.

- One bedroom flat • Extended lease • Immaculate original •
- East aspect • Overlooking the lake • No onward chain •



# Frank Harris & Co.



Total area (approx): 75.08 sq m (808 sq. ft)

Frank Harris & Co. Barbican and City

87 Long Lane, London,

EC1A 9ET

020 7600 7000

[citysales@frankharris.co.uk](mailto:citysales@frankharris.co.uk)

Energy Rating: N/A. We aim to make our particulars both accurate and reliable. However they are not guaranteed; nor do they form part of an offer or contract. If you require clarification on any points then please contact us, especially if you're traveling some distance to view. Please note that appliances and heating systems have not been tested and therefore no warranties can be given as to their good working order.

