

Frank Harris & Co.



Andrewes House, EC2Y

£899,950

This lovely Type 20 flat has been updated with a contemporary kitchen, integrated appliances and rubber flooring throughout. Situated on the second floor with a south facing reception room, a bespoke divider to close off the l-shaped reception room and lots of natural light. The bathroom and wc have the original features with the bedroom having newly fitted wardrobes. The hallway has a fitted lightbox currently used as a desk.



The bedrooms in Andrewes House overlook the lake, the gardens are purely for Barbican residents, and parking is available below the building for rent with a 24 hour car park attendant.

Within walking distance of Moorgate, Barbican, Farringdon and St.Pauls underground stations with access to the Elizabeth line, Central, Circle and Hammersmith & City lines.

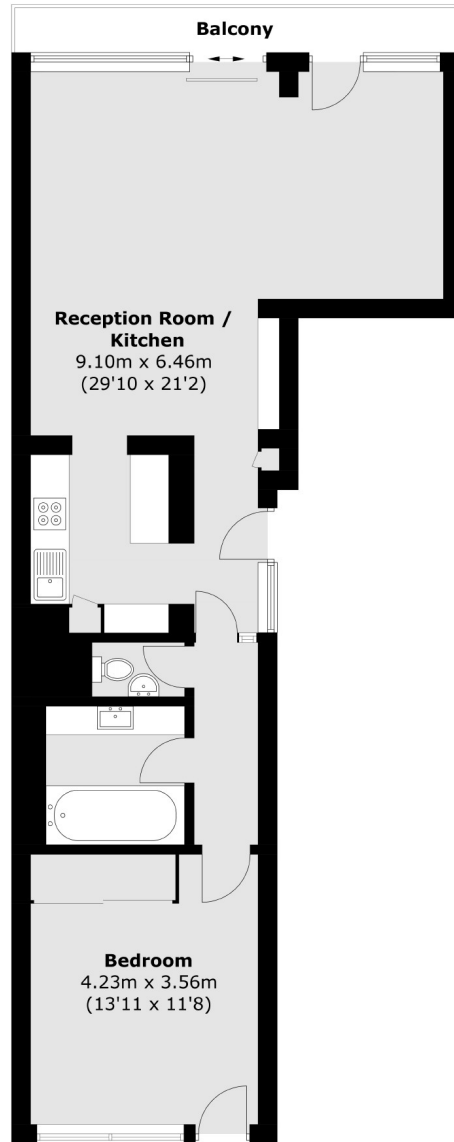
- Offers in excess of • One bedroom flat • Type 20 •
- Updated kitchen • Rubber flooring • No onward chain •







Frank Harris & Co.



Total area (approx.): 70.5 sq. m (758.8 sq. ft)
Balcony area: 4.9 sq. m (52.7 sq. ft)

Frank Harris & Co. Barbican and City
87 Long Lane, London,
EC1A 9ET
020 7600 7000
citysales@frankharris.co.uk

Energy Rating: D. We aim to make our particulars both accurate and reliable. However they are not guaranteed; nor do they form part of an offer or contract. If you require clarification on any points then please contact us, especially if you're traveling some distance to view. Please note that appliances and heating systems have not been tested and therefore no warranties can be given as to their good working order.

