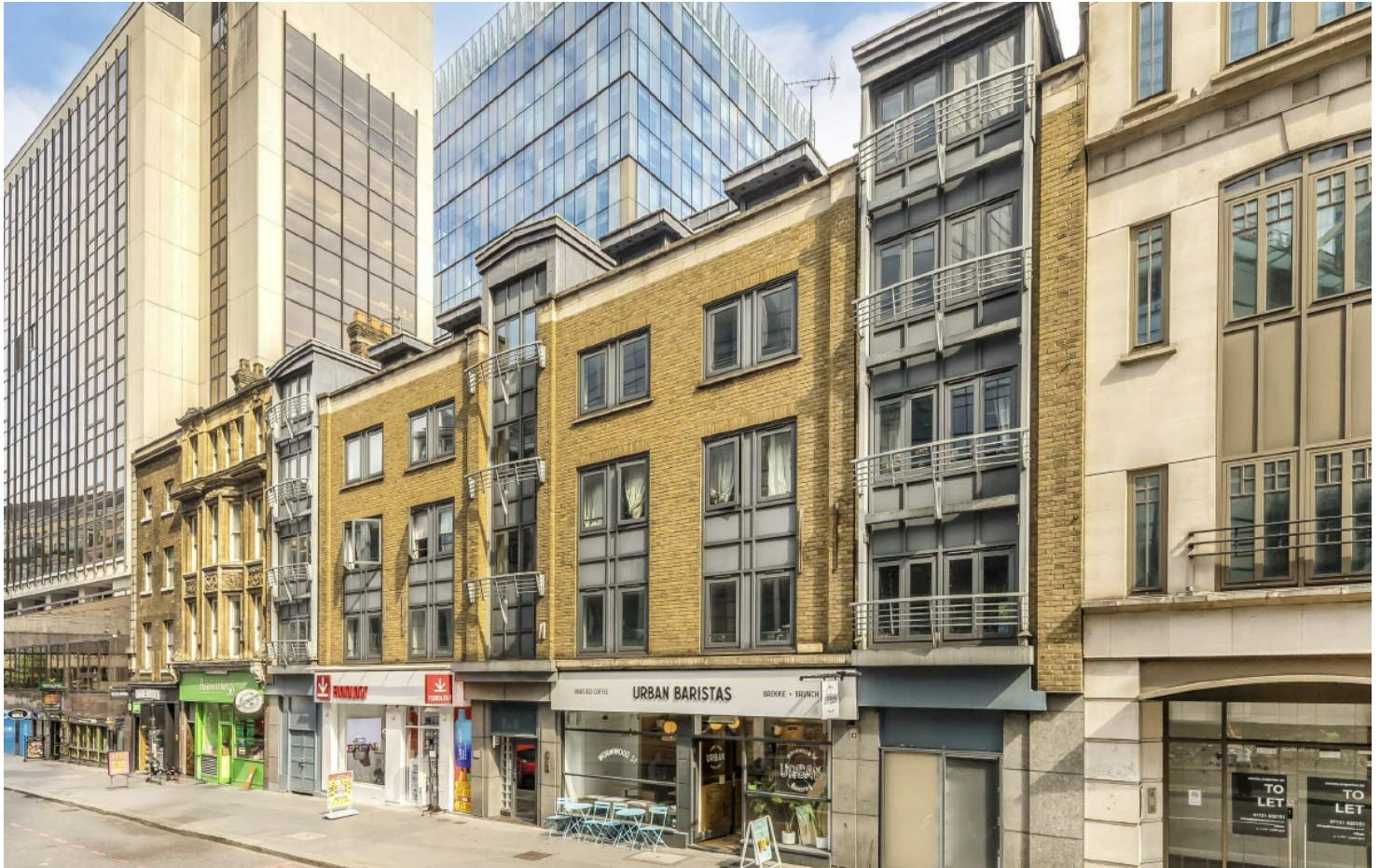


Frank Harris & Co.



City of London, EC2M

£657 Per week

An immaculate, recently renovated two bedroom apartment in this small development in the City of London. The apartment has a dual aspect reception room overlooking St Botolph gardens, two double bedrooms and a bathroom.

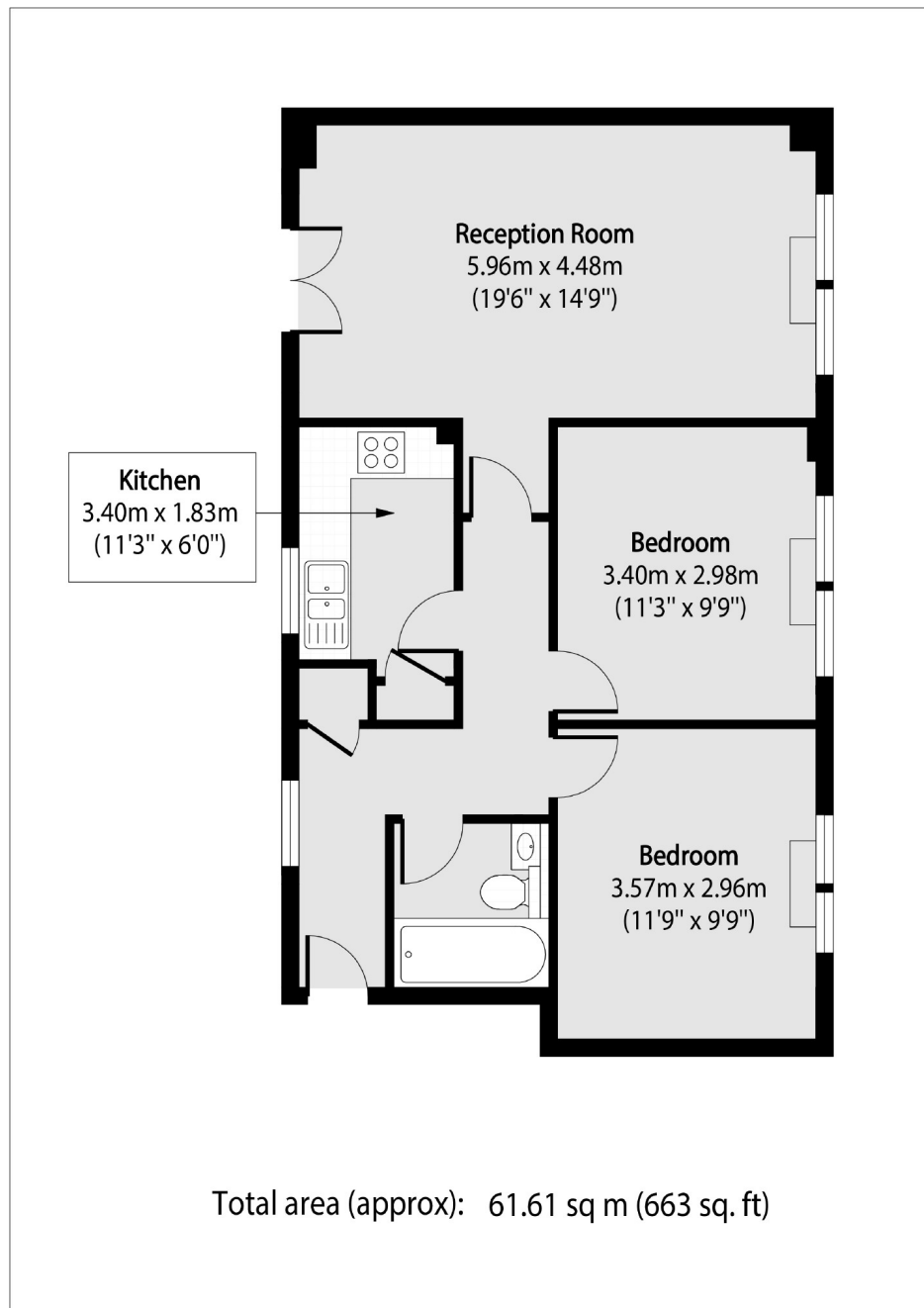


City Wall House is in the middle of the City of London, close to the junction of London Wall and Bishopsgate. Nearest transport links are just round the corner at Liverpool Street station, with Bank and Moorgate stations also close by.

- Two Bedrooms • One Bathroom • City Location •
 - Renovated Interior • Wood Floors • Unfurnished •
-



Frank Harris & Co.



Frank Harris & Co. Barbican and City
87 Long Lane, London,
EC1A 9ET
020 7601 1919
citylettings@frankharris.co.uk

Energy Rating: D. We aim to make our particulars both accurate and reliable. However they are not guaranteed; nor do they form part of an offer or contract. If you require clarification on any points then please contact us, especially if you're traveling some distance to view. Please note that appliances and heating systems have not been tested and therefore no warranties can be given as to their good working order.

