

Frank Harris & Co.



Sir John Lyon House, EC4V

£530,000

A third floor one bedroom flat with a contemporary kitchen partly open plan to the reception room, with integrated appliances including a dishwasher, microwave and fridge/freezer. The bedroom benefits from fitted wardrobes and there is wooden flooring throughout. With a full size bathroom and storage cupboard in the hall housing the washing machine. The building has daytime concierge and a communal winter garden for tenants use.



Located adjacent to Millenium bridge and a short walk to the South Bank where you will find Borough Market, the Tate Modern, the London Eye and the National and Globe theatres.

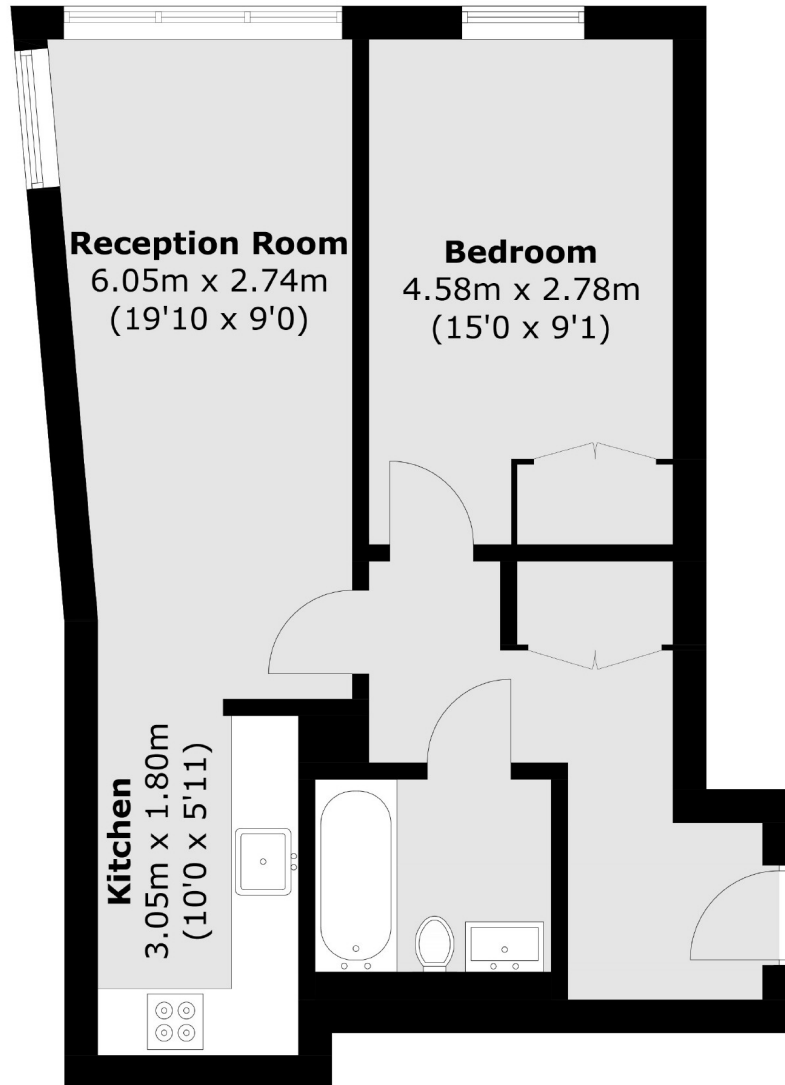
A short walk to the City's financial institutions and the numerous bars, cafes, shops and restaurants.

Transport links include Mansion House (Circle and District lines), St Pauls (Central line). National rail includes Blackfriars with trains to Gatwick and Luton airport and Cannon Street mainline station.

- One bedroom flat • Third floor • City location •
- Contemporary interior • No onward chain • Close to the river •



Frank Harris & Co.



Total area (approx.): 47.5 sq. m (511.3 sq. ft)

Frank Harris & Co. Barbican and City
87 Long Lane, London,
EC1A 9ET
020 7600 7000
citysales@frankharris.co.uk

Energy Rating: C. We aim to make our particulars both accurate and reliable. However they are not guaranteed; nor do they form part of an offer or contract. If you require clarification on any points then please contact us, especially if you're traveling some distance to view. Please note that appliances and heating systems have not been tested and therefore no warranties can be given as to their good working order.

