

Frank Harris & Co.



Bartholomew Close, City of London, EC1A

£495,000

A delightful light studio set within a conservation area in the heart of the City of London. There is an inner hall area, separate modern bathroom, hardwood flooring, fully fitted kitchen with space for a table and chairs, and a large studio room with a recessed area ideal for a bed. The large sash windows look directly onto St. Bartholomew the Great Church (London's oldest surviving church).



The property benefits from an elegant fitted oak bookcase is in excellent condition throughout and is ready to move in.

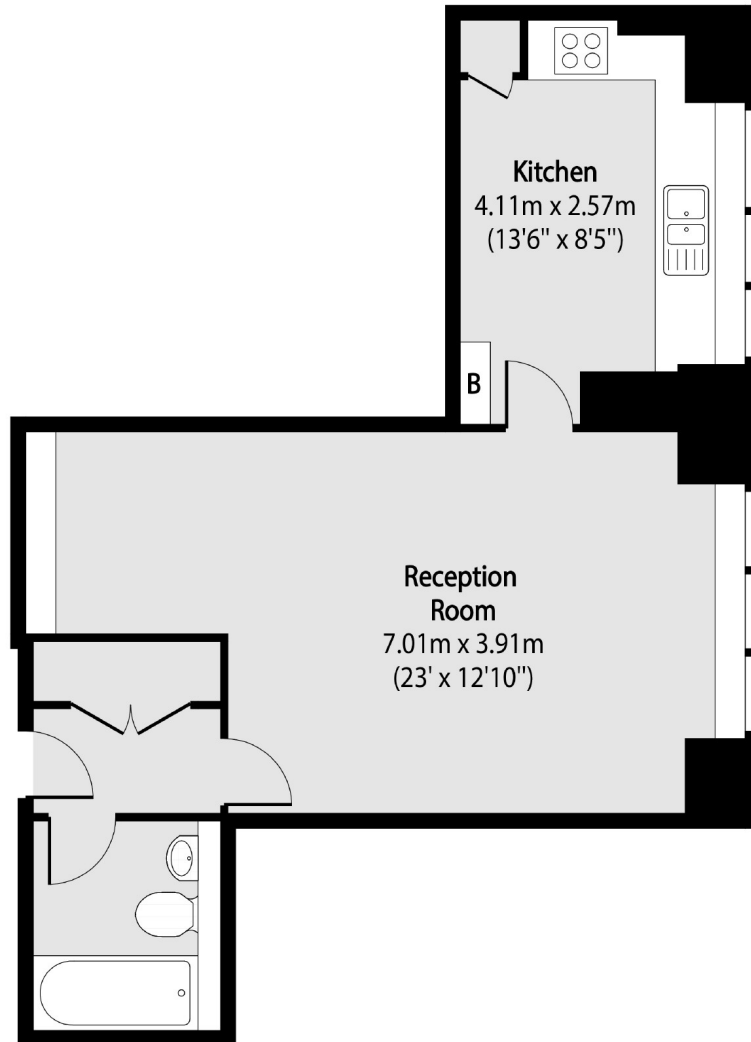
Within walking distance are a number of excellent restaurants in Clerkenwell and the City, along with five star hotels which include The Ned, Malmaison, South Place Hotel and Vintry and Mercer with a roof terrace dining area.

The location benefits from superb transport links, with Barbican, Farringdon and St Paul's stations all being close by. Thameslink services from Farringdon give direct access to Gatwick and Luton airports, and the Elizabeth line direct, fast access to Canary Wharf, Heathrow and Bond Street.

- Studio apartment • High ceilings • Separate kitchen •
- Views of Church • Close to Farringdon • No onward chain •



Frank Harris & Co.



Total area (approx): 41.62 sq m (448 sq. ft)

Frank Harris & Co. Barbican and City
87 Long Lane, London,
EC1A 9ET
020 7600 7000
citysales@frankharris.co.uk

Energy Rating: . We aim to make our particulars both accurate and reliable. However they are not guaranteed; nor do they form part of an offer or contract. If you require clarification on any points then please contact us, especially if you're traveling some distance to view. Please note that appliances and heating systems have not been tested and therefore no warranties can be given as to their good working order.

