

Frank Harris & Co.



Clerkenwell, EC1N

£375 Per week

Charming studio apartment situated within this mansion block on a quiet side street located between Gray's Inn Road and Hatton Garden. Perfect pied-a-terre for anyone needing easy access to Clerkenwell, the City's legal quarter or King's Cross.



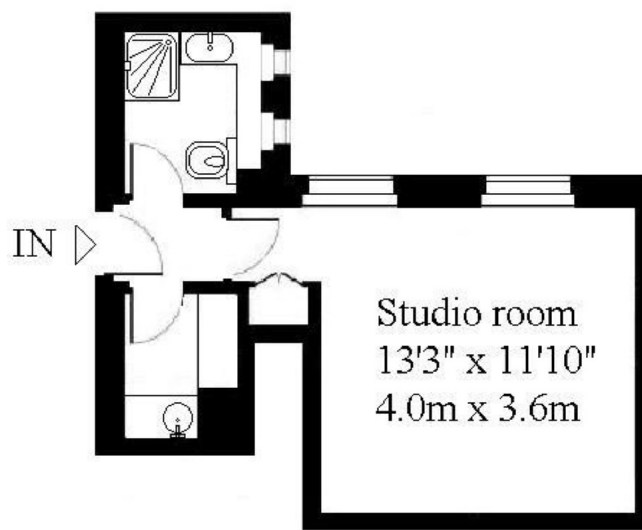
Courtfield House is situated close to Hatton Garden and the local amenities of Clerkenwell, with transport links nearby at Farringdon and Chancery Lane stations

- Studio Apartment • Quiet Location • Communal Heating •
 - Communal Hot Water • Modern interior • Furnished •
-

Frank Harris & Co.

Courtfield House
Baldwin's Gardens EC1

Gross internal area (approx.): 260 sq.ft. / 24sq.m.



Typical example or generic floor plan for illustration purposes only. Actual example may vary.
NOT TO SCALE. All measurements of rooms, doors and windows are approximate and for identification purposes only.

Frank Harris & Co. Barbican and City
87 Long Lane, London,
EC1A 9ET
020 7601 1919
citylettings@frankharris.co.uk

Energy Rating: D. We aim to make our particulars both accurate and reliable. However they are not guaranteed; nor do they form part of an offer or contract. If you require clarification on any points then please contact us, especially if you're traveling some distance to view. Please note that appliances and heating systems have not been tested and therefore no warranties can be given as to their good working order.

