

# Frank Harris & Co.



**City of London, EC1A**

**£899,950**

This second floor flat benefits from an unusually large reception room with access to a good sized west facing balcony, there is a fully fitted kitchen and two double bedrooms with an en-suite to the principal bedroom.

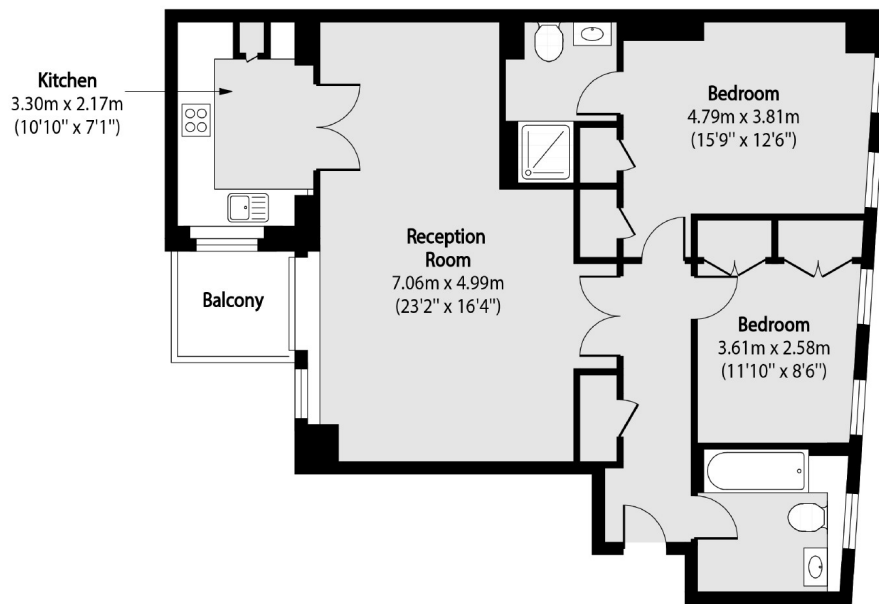


The location benefits from superb transport links, with Barbican, Farringdon and St Paul's stations all being close by. Thameslink services from Farringdon give direct access to Gatwick and Luton airports, and the Elizabeth line direct, fast access to Canary Wharf, Heathrow and Bond Street.

- Two bedroom flat • Two bathrooms • West facing balcony •
- No onward chain • Clerkenwell location • Elizabeth line close by •



# Frank Harris & Co.



Total area (approx): 76.91 sq m (828 sq. ft)

Balcony total area (approx): 3.23 sq m (35 sq. ft)

Frank Harris & Co. Barbican and City

87 Long Lane, London,

EC1A 9ET

020 7600 7000

[citysales@frankharris.co.uk](mailto:citysales@frankharris.co.uk)

Energy Rating: E. We aim to make our particulars both accurate and reliable. However they are not guaranteed; nor do they form part of an offer or contract. If you require clarification on any points then please contact us, especially if you're traveling some distance to view. Please note that appliances and heating systems have not been tested and therefore no warranties can be given as to their good working order.

