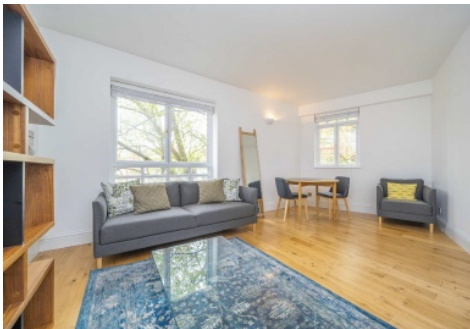


Frank Harris & Co.



Rosebery Court, EC1R

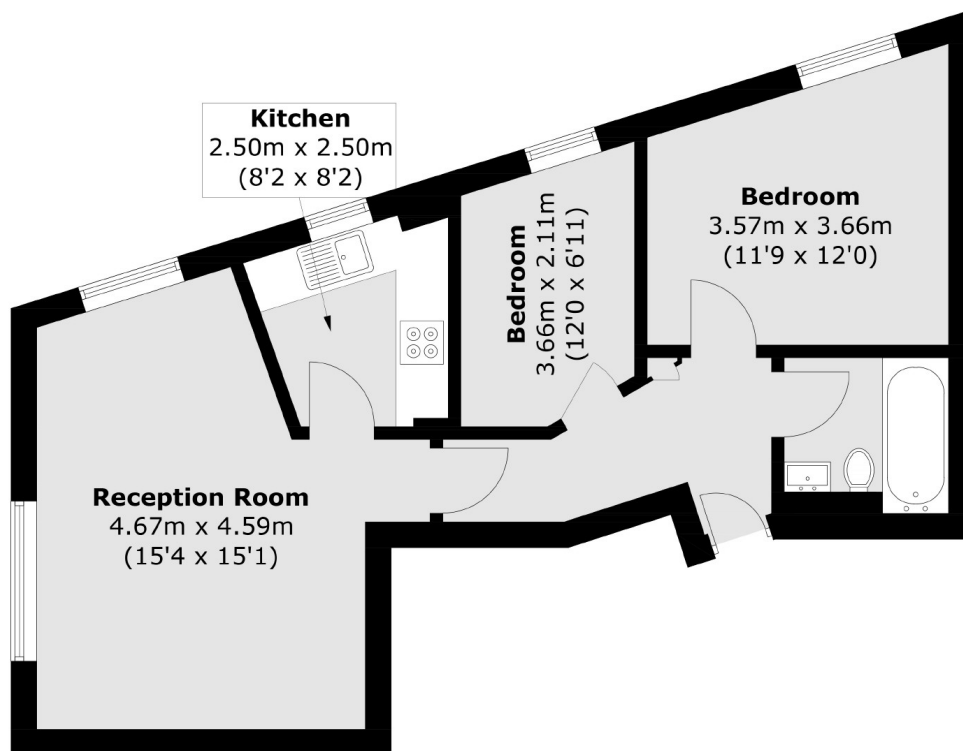
£685,000

A well appointed two bedrooms home located on the third floor with lift access. The property has a bright dual aspect windows living room, a separate kitchen with built in appliances.

Located in the heart of the City, Rosebery Court offers excellent transportation. Local amenities include Exmouth Market and Lamb's Conduit Street, making this development a perfect pied a terre for city commuters and London lovers alike.

- Two Bedrooms • Dual Aspect Windows • Lift Access •
- Communal Garden • Excellent Transport • No Onward Chain •

Frank Harris & Co.



Total area (approx.): 49.7 sq. m (535.0 sq. ft)

Frank Harris & Co. Bloomsbury and Kings Cross
81 Marchmont Street,
London, WC1N 1AL
020 7405 4444
bloomsburysales@frankharris.co.uk

Energy Rating: C. We aim to make our particulars both accurate and reliable. However they are not guaranteed; nor do they form part of an offer or contract. If you require clarification on any points then please contact us, especially if you're traveling some distance to view. Please note that appliances and heating systems have not been tested and therefore no warranties can be given as to their good working order.

