

Frank Harris & Co.



Whittington House, London, EC4R

£695,000

This large one bedroom flat (in excess of 850sqft), could easily be converted into a two bedroom flat, with a shaker style kitchen, wooden flooring and bespoke shelving and cupboards throughout. Located in the heart of the City of London, close to The Bloomberg arcade with its multiple bars and restaurants and One New Change shopping centre.



Whittington House was originally built as a school in 1832, this stunning Grade II listed building is famously known as the site of the former house of Richard "Dick" Whittington (c1354-1423), who was four times Lord Mayor of London and a member of Parliament.

The flat is in this quiet cobbled road moments from the heart of The City's financial district, easily accessible to Bank, Mansion House and Cannon Street Stations.

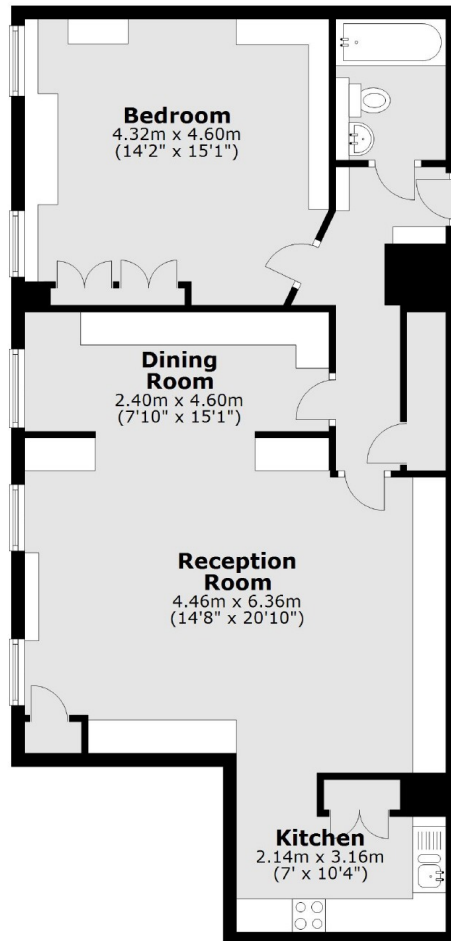
Shopping facilities nearby include a Waitrose and Sainsburys supermarket, and One New Change Shopping centre with an M&S foodstore. Five star hotels just a short stroll away include The Ned and Vintry and Mercer. The Barbican Centre and Borough Market are also within walking distance.

The nearest train station is Cannon Street, with Bank and Monument also close by with access to the Central, Northern, Circle and Hammersmith and City line.

- Large one bedroom flat • Immaculate condition • Lease in excess 125 years •
- Close to Cannon Street • Small development • New roof on Building •



Frank Harris & Co.



Total area: approx. 79.0 sq. metres (850.8 sq. feet)

Frank Harris & Co. Barbican and City
87 Long Lane, London,
EC1A 9ET
020 7600 7000
citysales@frankharris.co.uk

Energy Rating: . We aim to make our particulars both accurate and reliable. However they are not guaranteed; nor do they form part of an offer or contract. If you require clarification on any points then please contact us, especially if you're traveling some distance to view. Please note that appliances and heating systems have not been tested and therefore no warranties can be given as to their good working order.

