

Frank Harris & Co.



Cromwell Tower, Barbican, EC2Y

£1,795,000

A seventeenth floor flat which has been beautifully updated, with three good sized bedrooms and a study which leads from the reception room, two shower rooms were added by Thomson Brothers. The galley kitchen has a Siemens hob, Aeg oven, integrated fridge and freezer, stainless steel worktop. An adjacent utility room has plumbing for a dishwasher, washing machine and washer dryer.



The reception room has a dual aspect with views north towards the impressive tower blocks on City Road and west towards the London Eye and beyond. The master bedroom has extensive built in storage and full height windows facing north, two further bedrooms have space for wardrobes or fitted storage.

Cromwell Tower was completed in 1973, the first of the Barbican Towers to be completed. The building is close to a Waitrose store on Whitecross Street, and Marks and Spencer at Moorgate. Facilities nearby include numerous gyms, One New Change Shopping Centre on Cheapside the Ned Hotel at Bank, and a good selection of eateries and bars in Clerkenwell. Within a short walk are Moorgate, Liverpool Street and Farringdon Stations and the Elizabeth line.

Within a short walk are Moorgate, Liverpool Street and Farringdon Stations and the Elizabeth line.

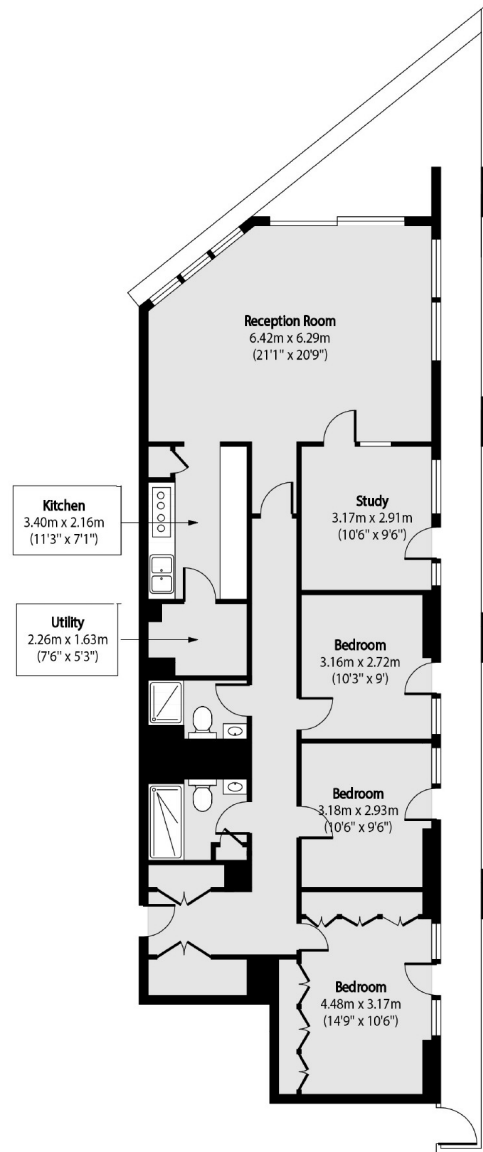
- 17th Floor • Three bedrooms • Dining room / Study •
- Thomson Brothers bathrooms • No onward chain • 24 Hour concierge •







Frank Harris & Co.



Total area (approx): 112.03 sq m (1206 sq. ft)

Frank Harris & Co. Barbican and City
87 Long Lane, London,
EC1A 9ET
020 7600 7000
citysales@frankharris.co.uk

Energy Rating: . We aim to make our particulars both accurate and reliable. However they are not guaranteed; nor do they form part of an offer or contract. If you require clarification on any points then please contact us, especially if you're traveling some distance to view. Please note that appliances and heating systems have not been tested and therefore no warranties can be given as to their good working order.

