

# Frank Harris & Co.



## City Walk Apartments, Seward Street, EC1V

£700,000

A lovely two bedroom two bathroom apartment on the first floor with a secure parking space situated in Clerkenwell. The south facing reception room is adjacent to the kitchen with integrated appliances, two double bedrooms and an en-suite shower room.

The building benefits from a lift and outside seating at the rear of the building.



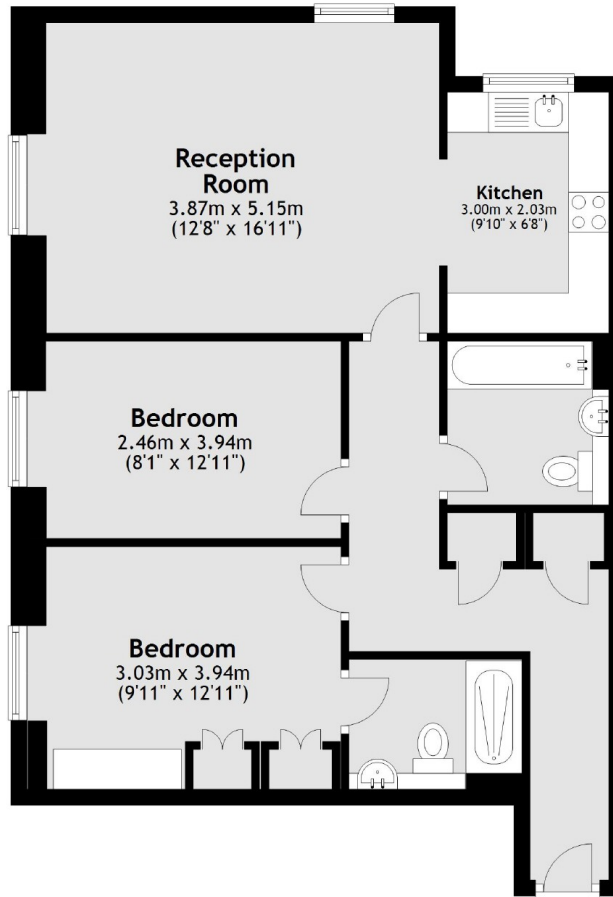
Waitrose, M&S Foods and Co-op are all within walking distance, as are the Barbican Centre and Sadler's Wells. There is a good selection of bars, restaurants and coffee shops nearby, and the flat is close to the business district of the Square Mile and to the tech hubs of Old Street.

Transport links include the Elizabeth line, Circle, District and the Hammersmith and City line from Barbican and the Northern line from Old Street.

- OIEO • Two bedrooms • Two bathrooms •
- Parking space • Clerkenwell location • Long lease •
- No onward chain •



# Frank Harris & Co.



Total area: approx. 68.7 sq. metres (739.5 sq. feet)

Frank Harris & Co. Barbican and City  
87 Long Lane, London,  
EC1A 9ET  
020 7600 7000  
citysales@frankharris.co.uk

Energy Rating: B. We aim to make our particulars both accurate and reliable. However they are not guaranteed; nor do they form part of an offer or contract. If you require clarification on any points then please contact us, especially if you're traveling some distance to view. Please note that appliances and heating systems have not been tested and therefore no warranties can be given as to their good working order.

