

Frank Harris & Co.



Cromwell Tower, Barbican, EC2Y

£2,000,000

This lovely 16th floor apartment enjoys exceptional views of London, within the iconic Barbican Estate. Views of the London Eye, the river and St. Pauls, from the spacious south-facing terrace, with a conjoining west-facing balcony that runs the length of the apartment, flooding it with sunlight throughout the day and framing amazing sunsets. With a galley kitchen, utility area, four bedrooms, an en-suite shower room and bathroom.



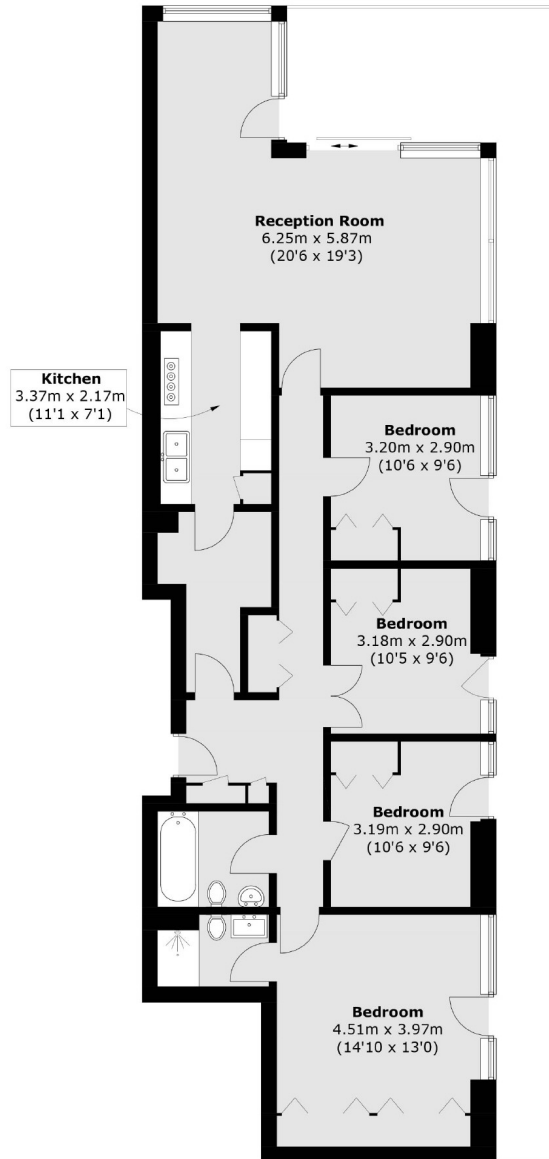
Cromwell Tower was completed in 1973, the first of the Barbican Towers to be completed. The building is close to a Waitrose store on Whitecross Street, and Marks and Spencer at Moorgate. Facilities nearby include numerous gyms, One New Change Shopping Centre on Cheapside the Ned Hotel at Bank, and a good selection of eateries and bars in Clerkenwell. Within a short walk are Moorgate, Liverpool Street and Farringdon Stations and the Elizabeth line.

Transport links are excellent, with Underground stations at nearby Barbican, Farringdon (Elizabeth, Circle, Hammersmith & City and Metropolitan Lines and National Rail), Moorgate, St Paul's, as well as Liverpool Street underground and National Rail Station.

- Four bedroom flat • 16th Floor • South and west aspect •
 - Two bathrooms • 24 hour concierge • No onward chain •
-



Frank Harris & Co.



Total area (approx.): 117.0 sq. m (1259.3 sq. ft)

Frank Harris & Co. Barbican and City
87 Long Lane, London,
EC1A 9ET
020 7600 7000
citysales@frankharris.co.uk

Energy Rating: N/A. We aim to make our particulars both accurate and reliable. However they are not guaranteed; nor do they form part of an offer or contract. If you require clarification on any points then please contact us, especially if you're traveling some distance to view. Please note that appliances and heating systems have not been tested and therefore no warranties can be given as to their good working order.

