

# Frank Harris & Co.



**Frobisher Crescent, Barbican, EC2Y**

**£700,000**

A top floor, one bedroom flat with vaulted ceilings throughout. On entering the property there are wooden floors throughout, a separate wc with a large storage cupboard housing the washing machine, the reception is open plan to the kitchen with integrated appliances including a dishwasher and a large balcony. The bedroom is on the mezzanine level with a fitted wardrobe and en-suite shower room.

The flat is flooded with natural light.



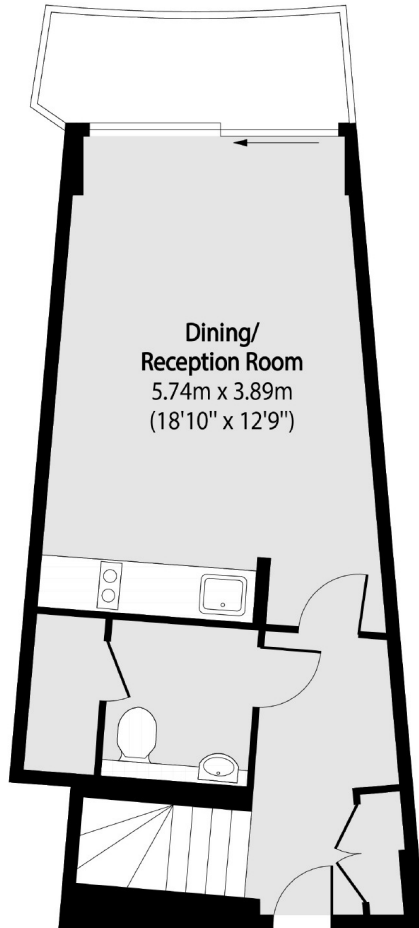
Frobisher Crescent was completed in 2010 and benefits from being in a quiet location overlooking the internal Sculpture Court, residents have use of the private gardens and parking below the buildings (a separate charge applies). There is a lift which goes directly down to the Barbican Arts Centre with its Conservatory, Cinemas, Arts Centre, Library and restaurants.

Situated above the Barbican Arts Centre, and within the Barbican estate with full use of the residents gardens and facilities. The closest stations are Moorgate, Liverpool Street, Barbican and the new Elizabeth Line entrance on Long Lane.

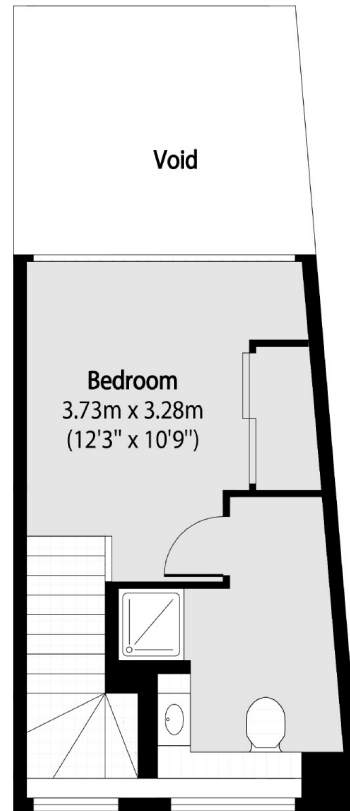
- 9th Floor • Modern Interior • Independent Heating •
- Long Lease • South And West Views • No Onward Chain •



# Frank Harris & Co.



**Ninth Floor**



**Mezzanine**

Total area (approx): 53.88 sq m (580 sq. ft)

(Excluding Void)

Frank Harris & Co. Barbican and City

87 Long Lane, London,

EC1A 9ET

020 7600 7000

[citysales@frankharris.co.uk](mailto:citysales@frankharris.co.uk)

Energy Rating: N/A. We aim to make our particulars both accurate and reliable. However they are not guaranteed; nor do they form part of an offer or contract. If you require clarification on any points then please contact us, especially if you're traveling some distance to view. Please note that appliances and heating systems have not been tested and therefore no warranties can be given as to their good working order.

