

Frank Harris & Co.



Cromwell Tower, Barbican, EC2Y

£1,595,000

A fabulous three bedroom tower flat situated on the 17th floor, (Type 1A)
There are three double bedrooms with views east towards the Gherkin and beyond, an updated kitchen, and an original bathroom and shower room. With a north and east aspect, 24 hour portorage, and use of the residents gardens. Extended lease.



This lovely property has a dual aspect reception room with a large sliding door leading to the balcony/ fire exit with space for a table and chairs. The galley kitchen has ample storage, and a breakfast room area. All bedrooms face east with full height windows and doors to the balcony/ fire exit which benefit from the morning sun. The large master bedroom has a walk in cupboard and a small storage cupboard.

Cromwell Tower is adjacent to the Barbican Arts Centre, close to Whitecross Street with a full size Waitrose and within walking distance of Farringdon, Barbican, Moorgate and Liverpool Street stations. With access to the Elizabeth line, Hammersmith and City, Circle, District, Metropolitan lines and Thameslink.

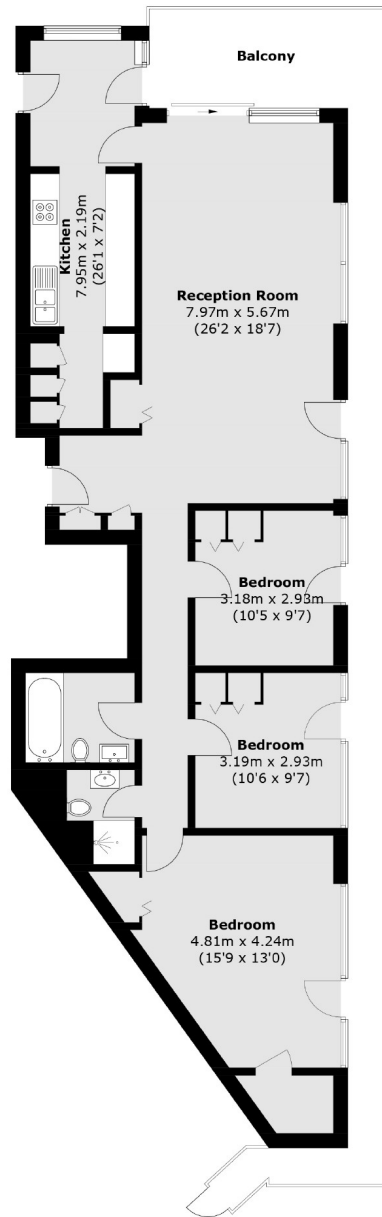
- 17th Floor, Type 1A • Three Bedrooms • Two Bathrooms •
- Extended Lease • 24-Hour Porterage • No Onward Chain •







Frank Harris & Co.



Total area (approx.): 110.9 sq. m (1,193.7 sq. ft)

Frank Harris & Co. Barbican and City
87 Long Lane, London,
EC1A 9ET
020 7600 7000
citysales@frankharris.co.uk

Energy Rating: N/A. We aim to make our particulars both accurate and reliable. However they are not guaranteed; nor do they form part of an offer or contract. If you require clarification on any points then please contact us, especially if you're traveling some distance to view. Please note that appliances and heating systems have not been tested and therefore no warranties can be given as to their good working order.

