

# Frank Harris & Co.



## Thomas More House, Barbican, EC2Y

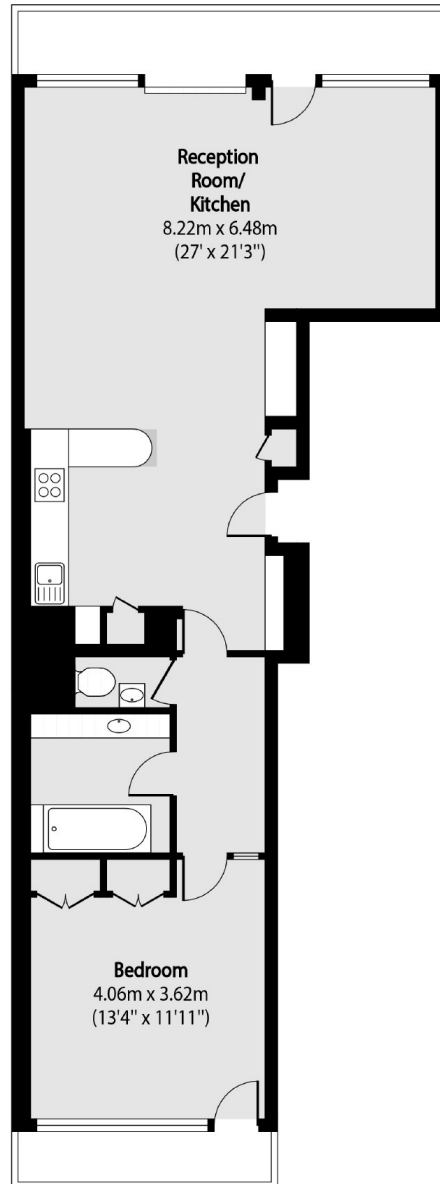
£830,000

One of the most desirable types of one bedroom apartment in the Barbican (Type 20), with a large L-shaped reception room which could easily convert the flat into a two bedroom, a south facing balcony, wooden floors throughout, a contemporary open plan kitchen, refitted bathroom, separate wc, the bedroom overlooks the residents gardens with window shutters and fitted wardrobes.

Transport links from Thomas More House include Barbican, Farringdon (Elizabeth line, Circle and Metropolitan Line, Hammersmith and City) St. Paul's (Central Line).

- Large one bedroom flat • Type 20 • Open plan kitchen •
- Extended lease • Wooden floors • No onward chain •

# Frank Harris & Co.



Total area (approx): 72.00 sq m (775 sq. ft)

Frank Harris & Co. Barbican and City  
87 Long Lane, London,  
EC1A 9ET  
020 7600 7000  
citysales@frankharris.co.uk

Energy Rating: D. We aim to make our particulars both accurate and reliable. However they are not guaranteed; nor do they form part of an offer or contract. If you require clarification on any points then please contact us, especially if you're traveling some distance to view. Please note that appliances and heating systems have not been tested and therefore no warranties can be given as to their good working order.

