

# Frank Harris & Co.



## Thomas More House, Barbican, EC2Y

£925,000

An excellent example of one of the most popular styles of one bedroom flats in the Barbican, this Type 20 retains many original features including the Brooke Marine kitchen, with a new hob and oven and the original divider in the lounge to create a second bedroom or study, and the bathroom. The reception room faces south and is flooded with natural light, with three full height full width windows leading to the south facing balcony. Extended lease.



The bedroom is at the rear of the property, with fitted wardrobes and a full height window and door leading to a balcony overlooking the quiet residents' gardens. The property benefits from engineered wood flooring throughout. Vitsoe shelving may be available by separate negotiation.

Barbican residents have use of their own communal gardens, parking for cars and bikes is available below the building by separate negotiation along with storage cages. The Barbican Arts Centre runs walking tours of the estate (small fee applies), there are also three cinema screens a concert hall, library and several restaurants.

Thomas More House was completed in 1973 and named after Sir Thomas More, statesmen, author and lawyer: imprisoned in the Tower of London, born in Cripplegate Parish.

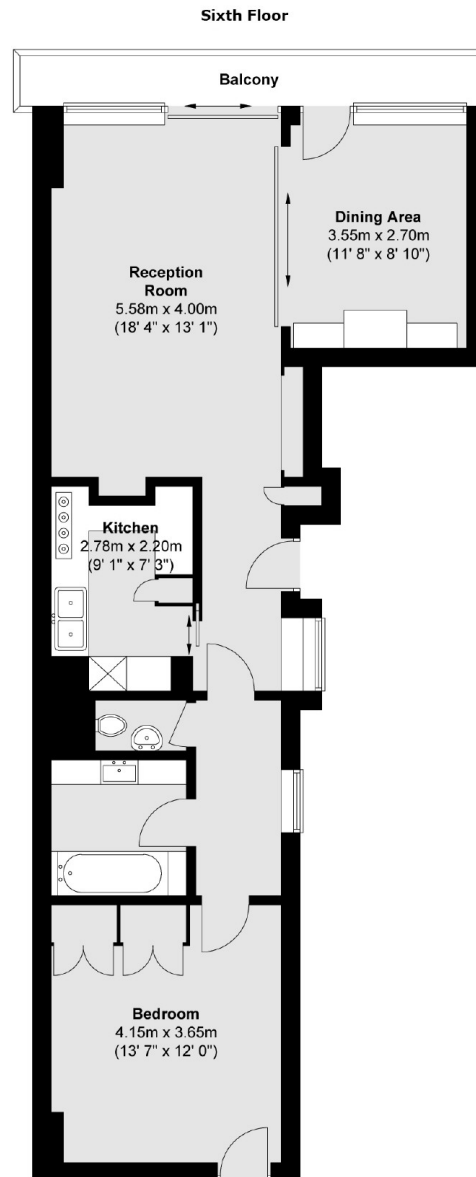
Transport links nearby are excellent with Barbican, St. Paul's, Farringdon and Moorgate stations all within a short-walking distance as well as the new Elizabeth Line station on Long Lane.

- One bedroom flat • Type 20 • Original features •
- 6th floor • View St.Paul's • Extended lease •





# Frank Harris & Co.



Total area (approx.) : 72.9 sq. m (785 sq. ft)  
Total balcony area (approx.) : 5.4 sq. m (58 sq. ft)

Frank Harris & Co. Barbican and City  
87 Long Lane, London,  
EC1A 9ET  
020 7600 7000  
citysales@frankharris.co.uk

Energy Rating: N/A. We aim to make our particulars both accurate and reliable. However they are not guaranteed; nor do they form part of an offer or contract. If you require clarification on any points then please contact us, especially if you're traveling some distance to view. Please note that appliances and heating systems have not been tested and therefore no warranties can be given as to their good working order.

