

# Frank Harris & Co.



## City Walk Apartments, EC1V

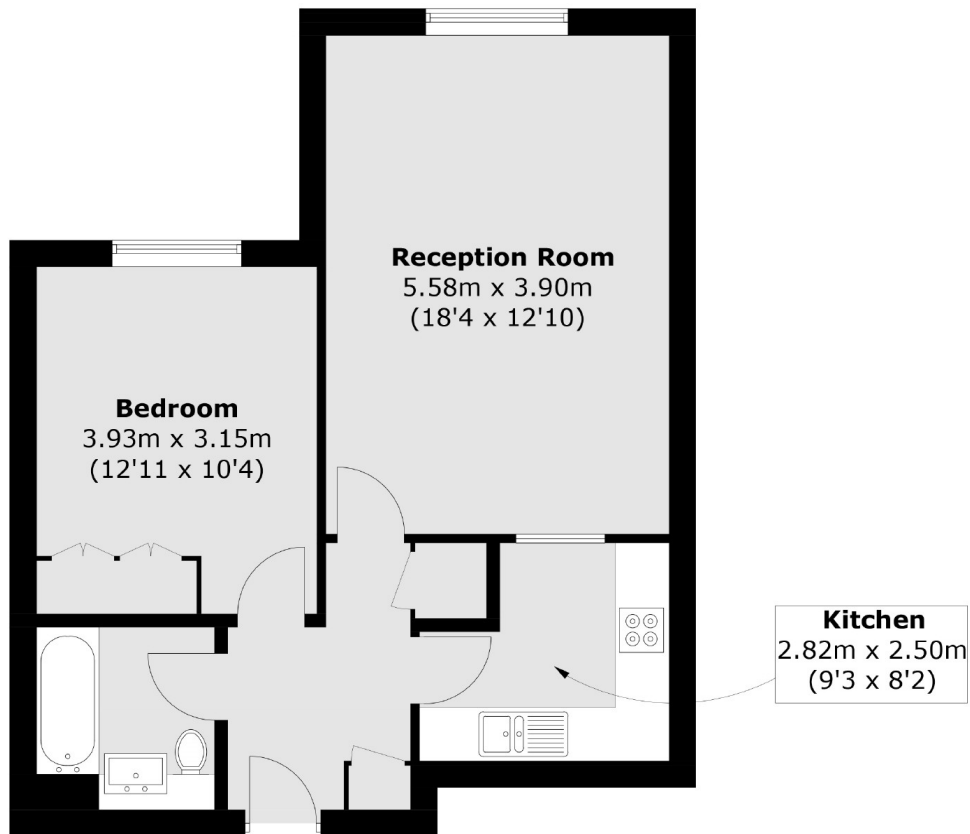
£475,000

This one double bedroom, apartment has a large 18' reception room, kitchen with integrated appliances, bathroom and long lease. There is plenty of storage with a built in wardrobe in the bedroom and two storage cupboards in the hallway.

City Walk is located on a tree lined one way street in then centre of Clerkenwell and its many shops and restaurants. Old Street, Farringdon (with the Elizabeth Line) and Angel stations are all within half a mile.

- One Double bedroom • Separate Kitchen • Close to Elizabeth line •
- No Onward Chain • 974 year lease • Parking space •

# Frank Harris & Co.



Total area (approx.): 51.8 sq. m (557.6 sq. ft)

Frank Harris & Co. Barbican and City  
87 Long Lane, London,  
EC1A 9ET  
020 7600 7000  
citysales@frankharris.co.uk

Energy Rating: B. We aim to make our particulars both accurate and reliable. However they are not guaranteed; nor do they form part of an offer or contract. If you require clarification on any points then please contact us, especially if you're traveling some distance to view. Please note that appliances and heating systems have not been tested and therefore no warranties can be given as to their good working order.

