

Frank Harris & Co.



Carthusian Street, City of London, EC1M

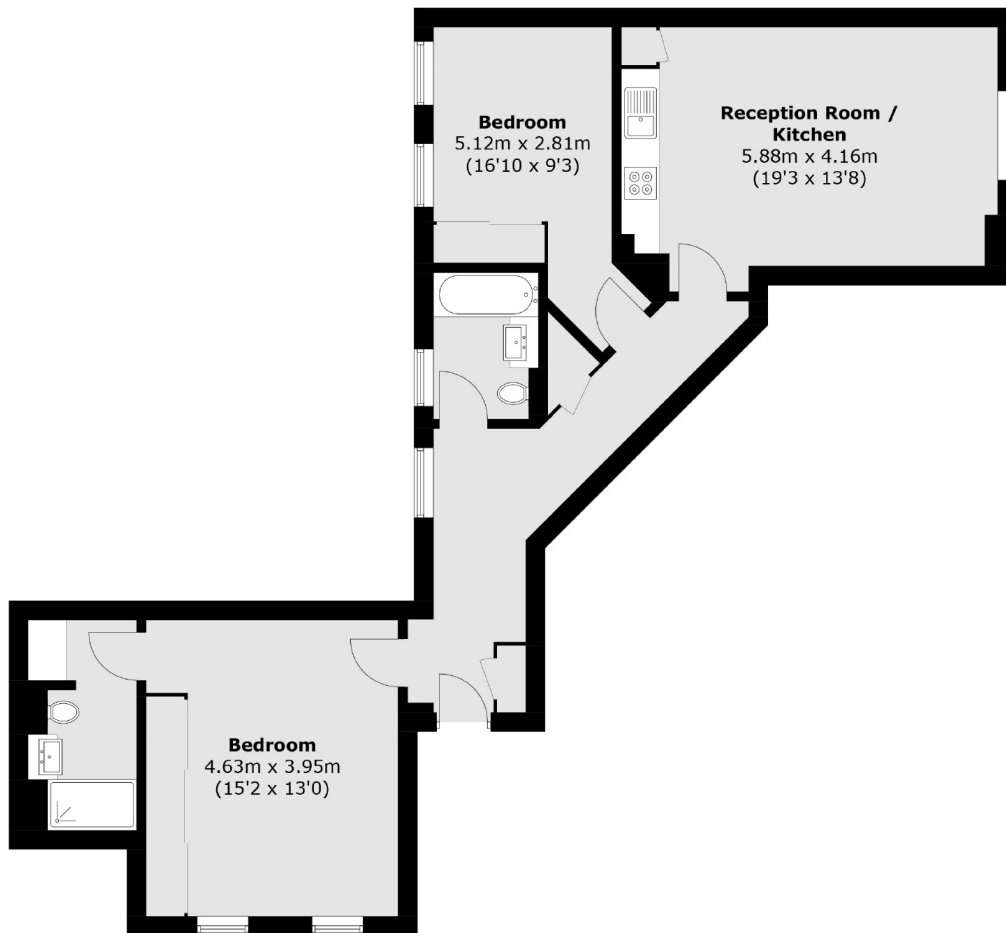
£775,000

A two bedroom, 2nd floor flat situated within the square mile, just a short walk to the Barbican Arts Centre, cinemas and restaurants. Shopping close by is located on Cheapside.

Within walking distance of the Elizabeth line in Farringdon which provides an easy commute to Heathrow, Canary Wharf and Clerkenwell. Alongside bars, cafes and restaurants close by.

- OIEO • Close To Elizabeth Line • Two Bedrooms •
- Two Bathrooms • Grade II Listed • No Onward Chain •
- City Location •

Frank Harris & Co.



Total area (approx.): 77.7 sq. m (836.3 sq. ft)

Frank Harris & Co. Barbican and City
87 Long Lane, London,
EC1A 9ET
020 7600 7000
citysales@frankharris.co.uk

Energy Rating: E. We aim to make our particulars both accurate and reliable. However they are not guaranteed; nor do they form part of an offer or contract. If you require clarification on any points then please contact us, especially if you're traveling some distance to view. Please note that appliances and heating systems have not been tested and therefore no warranties can be given as to their good working order.

