

# Frank Harris & Co.



Queens Quay, Upper Thames Street, EC4V

£500,000

A top floor one bedroom flat with an updated kitchen and shower room. There is a part view of St.Pauls from the reception room which is partly open plan to the kitchen and the bedroom benefits from fitted wardrobes. The building has daytime concierge, a basement laundry and allocated storage cages for each flat in the basement.



Located adjacent to Millenium bridge and a short walk to the South Bank where you will find Borough Market, the Tate Modern, the London Eye and the National and Globe theatres.

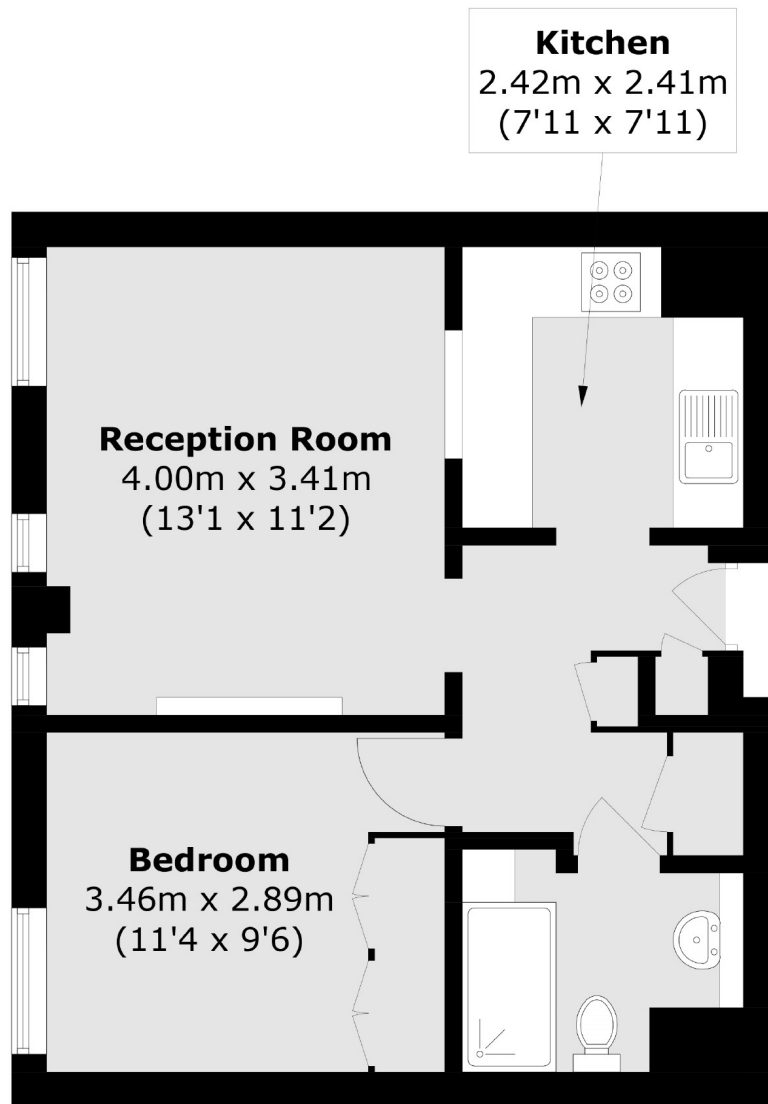
A short walk to the City's financial institutions and the numerous bars, cafes, shops and restaurants.

Transport links include Mansion House (Circle and District lines), St Pauls (Central line). National rail includes Blackfriars with trains to Gatwick and Luton airport and Cannon Street mainline station.

- One bedroom flat • 6th Floor • Updated kitchen •
- Extended lease • Communal roof terrace • No onward chain •



# Frank Harris & Co.



Total area (approx.): 41.5 sq. m (446.7 sq. ft)

Frank Harris & Co. Barbican and City  
87 Long Lane, London,  
EC1A 9ET  
020 7600 7000  
citysales@frankharris.co.uk

Energy Rating: D. We aim to make our particulars both accurate and reliable. However they are not guaranteed; nor do they form part of an offer or contract. If you require clarification on any points then please contact us, especially if you're traveling some distance to view. Please note that appliances and heating systems have not been tested and therefore no warranties can be given as to their good working order.

