

Frank Harris & Co.



Clerkenwell, EC1M

£1,038 Per week

A particularly well-proportioned two bedroom, two bathroom apartment located, in the middle of Clerkenwell. This apartment has an attractive, modern interior plus a large private terrace offering panoramic views over the City.

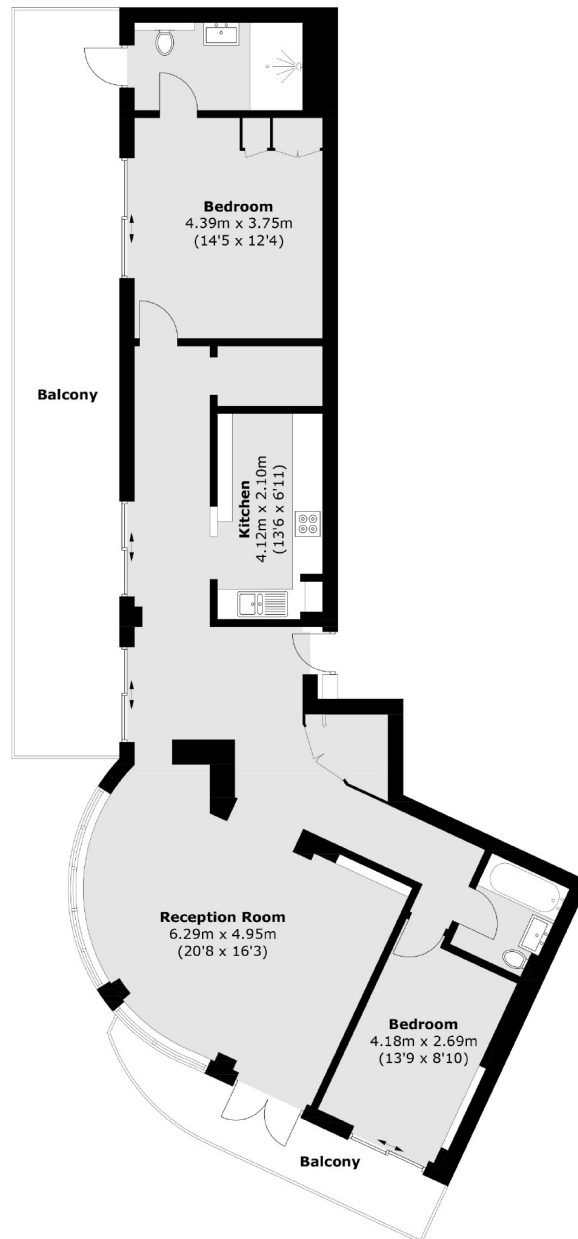


Millennium Heights is located just south of Clerkenwell Green, a short walk to all the local bars and restaurants. The apartment is less than a quarter mile to both Farringdon and Barbican stations.

- Two Bedrooms • Two Bathrooms • Wood Floors •
- Large Terrace • Panoramic Views • Furnished / Unfurnished •



Frank Harris & Co.



Total area (approx.): 109.7sq. m (1,180.8 sq. ft)
Balcony area (approx.): 39.3 sq. m (423.0 sq. ft)

Frank Harris & Co. Barbican and City
87 Long Lane, London,
EC1A 9ET
020 7601 1919
citylettings@frankharris.co.uk

Energy Rating: C. We aim to make our particulars both accurate and reliable. However they are not guaranteed; nor do they form part of an offer or contract. If you require clarification on any points then please contact us, especially if you're traveling some distance to view. Please note that appliances and heating systems have not been tested and therefore no warranties can be given as to their good working order.

