

Frank Harris & Co.



Hosier Lane, Clerkenwell, EC1A

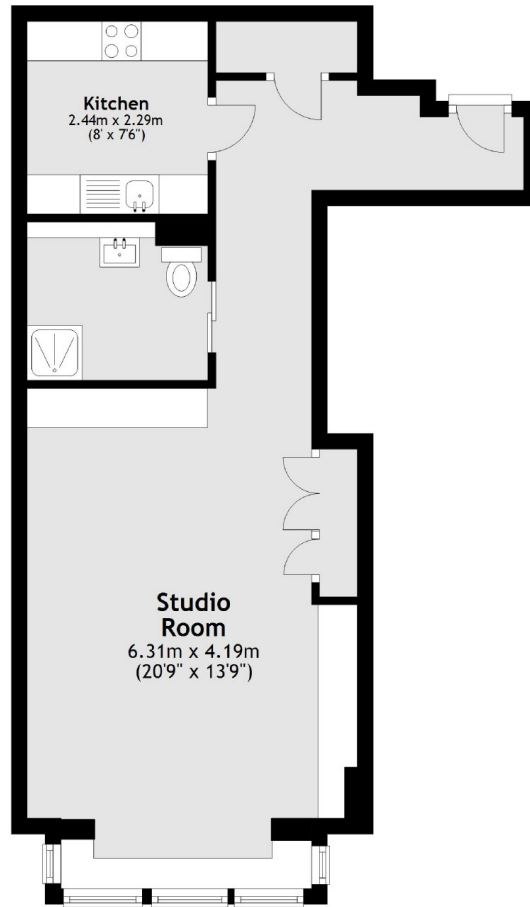
£435,000

A large fifth floor, studio apartment with a separate kitchen, shower room and 24 hour concierge. With a floor to ceiling bay window and spacious living area, there are wood floors fitted storage and a wall bed. The main reception and concierge has been completely refurbished and the development is serviced by two lifts.

On a quiet Road off of Smithfield Market, 10 Hosier Lane is under a quarter mile walk of City Thameslink and Farringdon station (an Elizabeth Line hub) and within a half mile of Bank and the City.

- Offers Over • Studio Apartment • Long Lease •
- No Onward Chain • 24 Hour Concierge • Separate Kitchen •

Frank Harris & Co.



Total area: approx. 45.4 sq. metres (489.0 sq. feet)

Frank Harris & Co. Barbican and City
87 Long Lane, London,
EC1A 9ET
020 7600 7000
citysales@frankharris.co.uk

Energy Rating: C. We aim to make our particulars both accurate and reliable. However they are not guaranteed; nor do they form part of an offer or contract. If you require clarification on any points then please contact us, especially if you're traveling some distance to view. Please note that appliances and heating systems have not been tested and therefore no warranties can be given as to their good working order.

