

Frank Harris & Co.



Ben Jonson House, EC2Y

£674,950

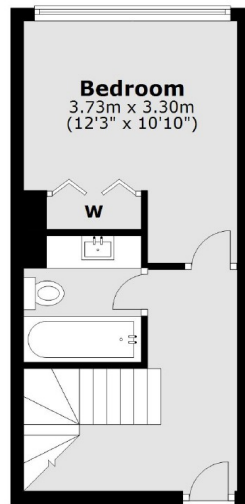
A one bedroom split-level flat retaining original Barbican features and teak staircase. This property is South-facing and has a double-width balcony.

Ben Jonson House has access to Barbican station, Crossrail, and the shopping facilities of the City of London and Clerkenwell.

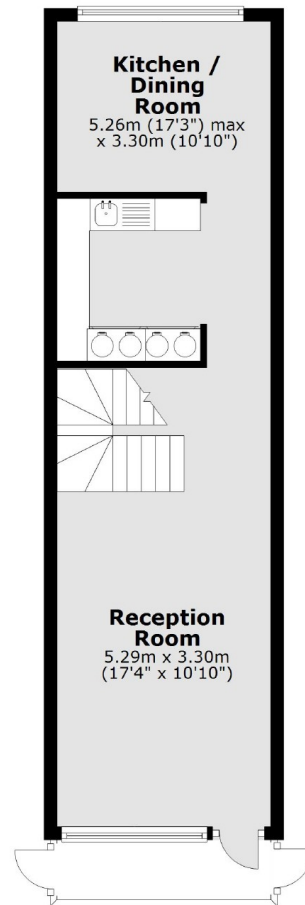
- Type M2B • Original Features • Extended Lease •
- No Onward Chain • Use Of Residents Gardens • South Facing Balcony •

Frank Harris & Co.

Third Floor



Fourth Floor



Total area: approx. 64.9 sq. metres (698.8 sq. feet)

Frank Harris & Co. Barbican and City
87 Long Lane, London,
EC1A 9ET
020 7600 7000
citysales@frankharris.co.uk

Energy Rating: TBC. We aim to make our particulars both accurate and reliable. However they are not guaranteed; nor do they form part of an offer or contract. If you require clarification on any points then please contact us, especially if you're traveling some distance to view. Please note that appliances and heating systems have not been tested and therefore no warranties can be given as to their good working order.