



VANDERPUMP
PROPERTY
AGENTS



Gregory Close

Lower Earley, RG6 4JJ

£1,100 PCM



Available now is a very well presented one bedroom house situated in the popular area of Lower Earley, property comes unfurnished, and comprises a modern kitchen with appliances (no fridge freezer), and a good sized lounge on the first floor is a large double bedroom, Modern bathroom with three piece suite with electric shower over, Electric Heating, Double Glazing, Parking, Situated with Good Access to M4 and Local Amenities, Council Tax Band B, EPC Current is 69C and potential 93A.

* for more info please see www.vanderpump.co.uk

PLEASE NOTE SUCCESSFUL APPLICANTS WILL HAVE TO PASS A CREDIT CHECK AND AN AFFORDABILITY TEST

Relevant letting and tenant protection information:

In addition to paying rent for the property, you may also be required to make the following permitted payments:

Before the tenancy starts:

Holding Deposit: 1 week's rent; and/or

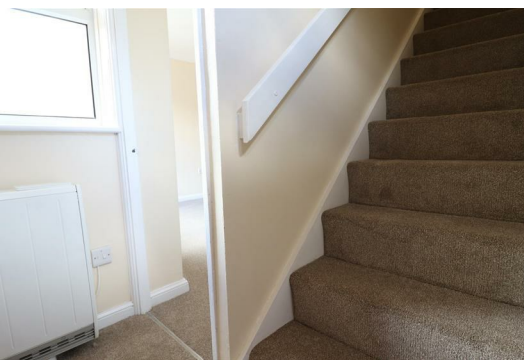
Deposit: 5 weeks rent (or in the case of rental income of more than £50,000 per annum 6 weeks rent).

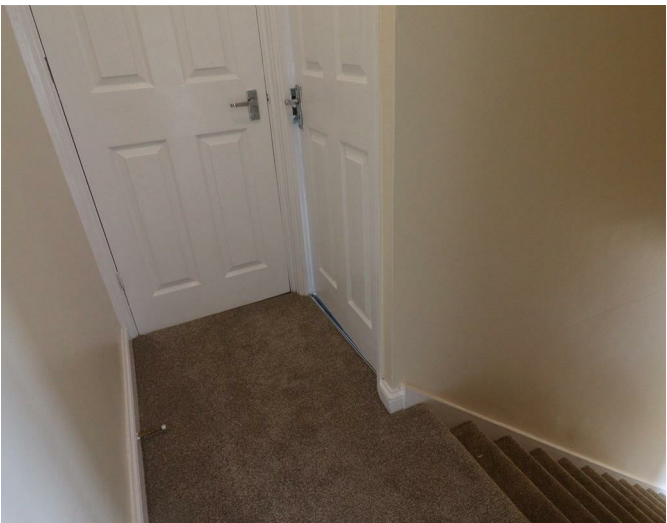
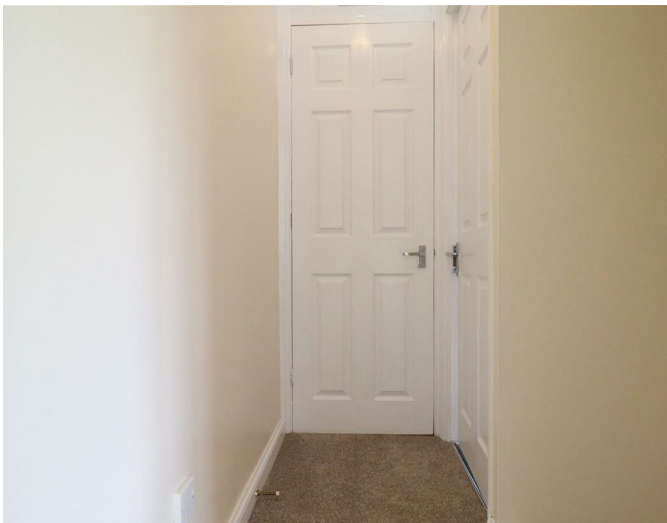
During the tenancy:

Payments to other third parties: such as Council Tax, utilities or payments for communications services;

Default Charges: such as payments for the replacement of lost keys or interest on overdue rent; and

Tenancy Transaction Charges: such as requests to vary or assign the tenancy.

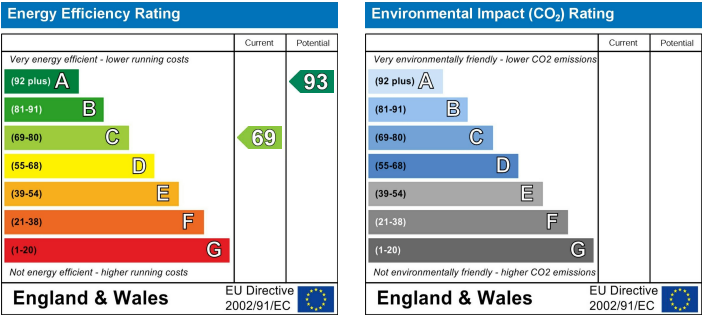




Area Map



Energy Efficiency Graph



These particulars, whilst believed to be accurate are set out as a general outline only for guidance and do not constitute any part of an offer or contract. Intending purchasers should not rely on them as statements of representation of fact, but must satisfy themselves by inspection or otherwise as to their accuracy. No person in this firms employment has the authority to make or give any representation or warranty in respect of the property.