



Flat 4, Glenside Court Higher Erith Road, Torquay - TQ1 2R.

Guide Price £80,000





Flat 4

Glenside Court Higher Erith Road,
Torquay

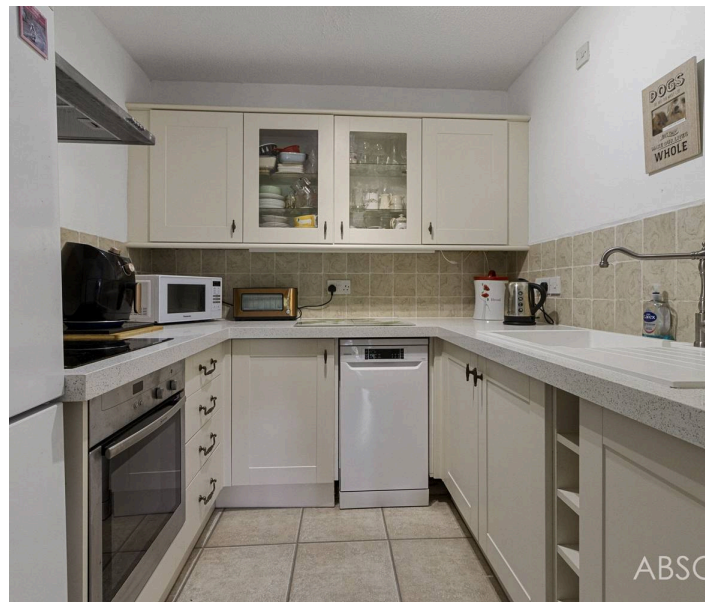
For sale: Flat 4, Glenside Court - level-access retirement flat in Wellswood. Close to Kent's Pub, Wellswood Village. Spacious double bedroom, modern kitchen, access to south-facing residents' gardens. Low management charges, separate storage cupboard. Perfect for retirement living.

Council Tax band: A

Tenure: Leasehold

EPC Energy Efficiency Rating: D

EPC Environmental Impact Rating: E



Flat 4

Glenside Court Higher Erith Road, Torquay

The development is set in the sought-after Lincombes Conservation area close to the village style community of Wellswood with its range of shops, cafes, post office, pharmacy and church. The local beaches at Meadfoot and Anstey's Cove and the facilities of town, harbour and seafront esplanade are just a short distance away. A regular bus service operates from both Babbacombe Road and Ilsham Road leading to the harbourside and town, out of town shopping areas and Torbay Hospital

Absolute Sales & Lettings

Absolute Sales & Lettings Ltd, 13 Ilsham Road - TQ1 2JG

01803 214214

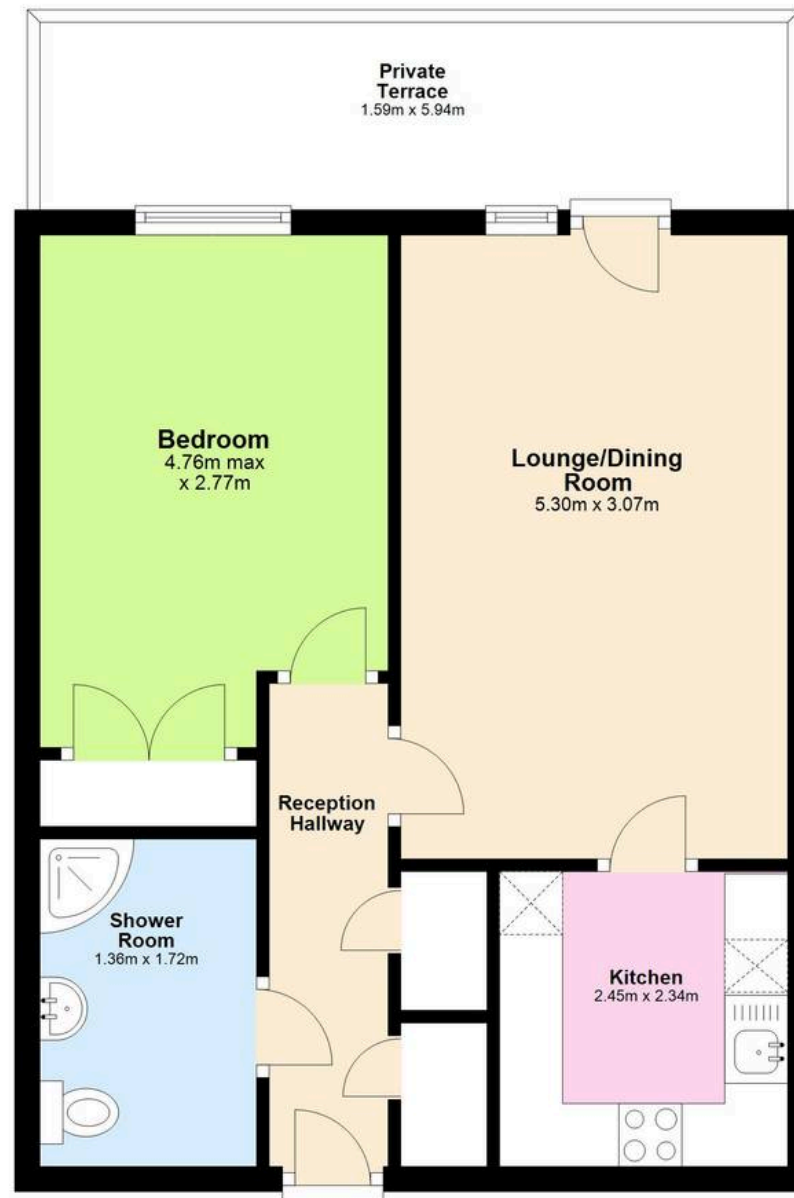
torquay@movewithabsolute.co.uk

movewithabsolute.co.uk/



Ground Floor

Approx. 43.3 sq. metres



Total area: approx. 43.3 sq. metres

Approx
Plan produced using PlanUp.

