



11 Manor House Middle Lincombe Road, Torquay – TQ1 2AF
£165,000





11 Manor House Middle Lincombe Road

Torquay, Torquay

Stunning sea views from this listed Victorian villa apartment in Lincombe Manor Retirement Village. High-end living with premier location, spacious rooms, on-site facilities, and allocated parking. No onward chain. Ideal retirement living. Council Tax band: D

Tenure: Leasehold

EPC Energy Efficiency Rating: C

EPC Environmental Impact Rating: E

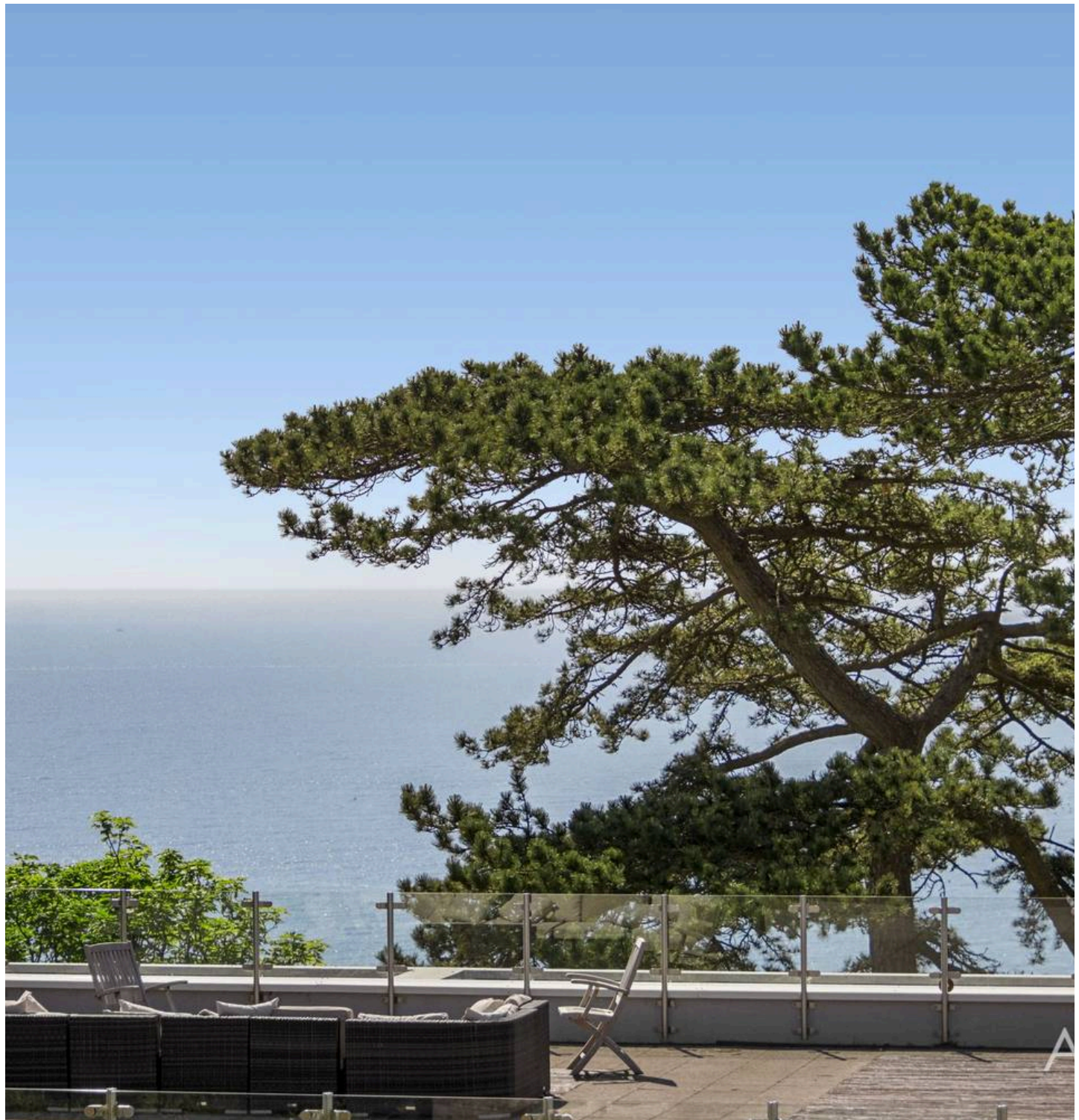
- Beautifully proportioned retirement apartment with glorious sea views
- Set amidst an enviable location in the Lincombes close to Wellswood Village, Meadfoot and The harbourside
- Retirement village lifestyle ideal for a sense of community with amazing on-site facilities
- Allocated parking space
- Stunning landscaped gardens with lawns, sun deck, gymnasium, onsite restaurant, bar, games room and much more...
- 24 hour porter and onsite manager in situ
- 2 bedroom first floor flat in the beautiful Manor house with direct lift access
- A grand open plan living space with sea views and high end kitchen
- No onward chain available to move in right away



11 Manor House Middle Lincombe Road

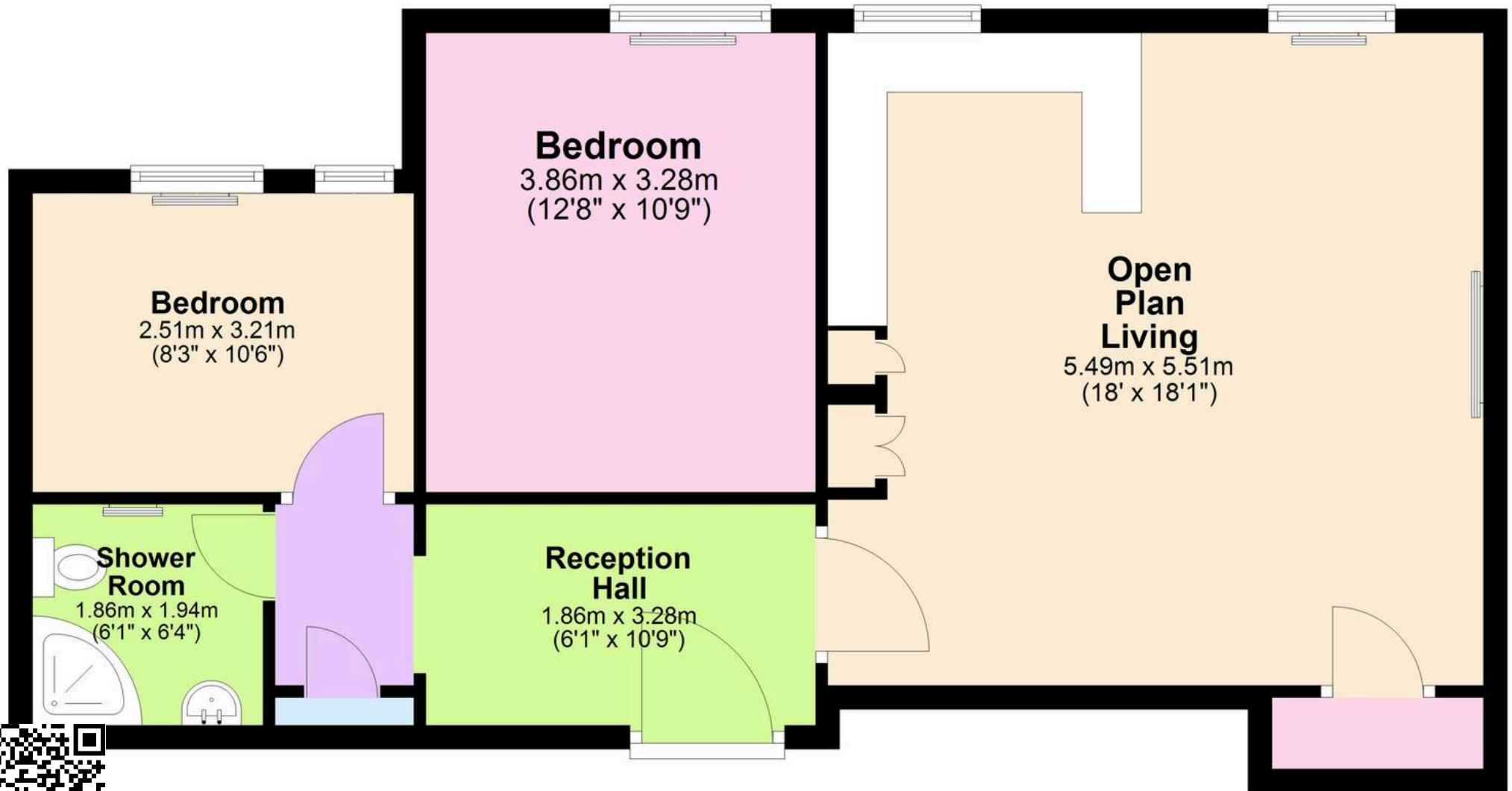
Torquay, Torquay

Lincombe Manor is set in beautiful, mature grounds with breath-taking, panoramic sea views out over Torbay. At the heart of this relaxed and tranquil setting is the Manor House, a magnificent Grade II listed building, dating back to 1864. The retirement village is to be found in Middle Lincombe Road, perfectly located for Wellswood, where can be found a range of amenities including shops, restaurants, a Post Office and the Parish Church of St Matthias. Meadfoot Beach is close by and gives access to the South West Coastal footpath, it is also home to a popular beach front café. Lincombe Manor is ideally positioned in the much sought-after area of the Lincombes, just one mile from Torquay town centre. Torquay itself is part of the stunning 'English Riviera', which also includes Paignton and Brixham. The English Riviera is a resort in the truest sense of the word, attracting people of all ages and interests. Torquay has recently undergone a water-front regeneration, and a number of new attractions can be seen in Torquay. It's a true English seaside town that has something for everyone.



First Floor

Approx. 65.9 sq. metres (709.2 sq. feet)



Total area: approx. 65.9 sq. metres (709.2 sq. feet)

