





44 Haldon Road

Torquay, Torquay

An attractive double fronted Executive style modern house graces the sought-after Lincombes area in Torquay, showcasing this 4-bedroom detached property as a jewel in the neighbourhood's crown. The property welcomes you with a resin driveway leading to a double-width garage boasting twin up and over doors for your convenience. Inside, the quadruple aspect lounge exudes an abundance of natural light through its double bay windows, complemented by a feature fireplace housing a Stovax log burner, creating a cosy and inviting ambience. The interiors are not only crisp and modern but also offer a fabulous flow, ideal for contemporary living. The open plan kitchen dining room seamlessly connects to the sunroom/conservatory, which offers picturesque views of the gardens, providing a serene backdrop. Additionally, the property boasts a spacious hallway, a study, and a separate utility room, ensuring both functionality and style to meet your daily needs.

Outside, the property unveils a pristine south-facing garden, featuring a perfectly manicured lawn, a spacious patio area, and a surrounding Laurel hedge-line, offering privacy and tranquillity for outdoor gatherings. Upstairs, the house accommodates four bedrooms, with the principal bedroom boasting a spacious en-suite and a closet.

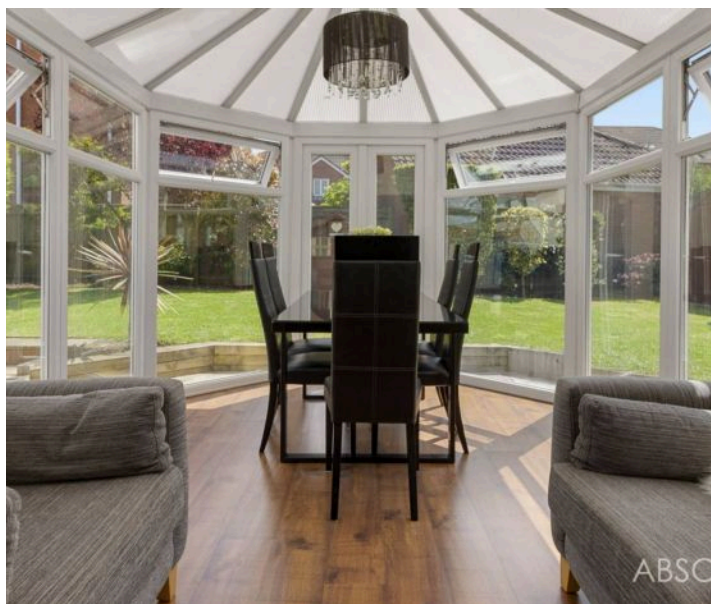


DOUBLE GARAGE

2 Parking Spaces

DRIVEWAY

3 Parking Spaces



44 Haldon Road

Torquay, Torquay

Haldon Road is sought after for its quiet ambience, reached from Higher Lincombe Road, one of three roads circling Lincombe Hill, well placed for Wellswood where can be found a vibrant community with shops, restaurants, schooling and Church. Walks in the areadescent through the hillside towards Ilsham Valley and the sea at Meadfoot Beach.

Council Tax band: F

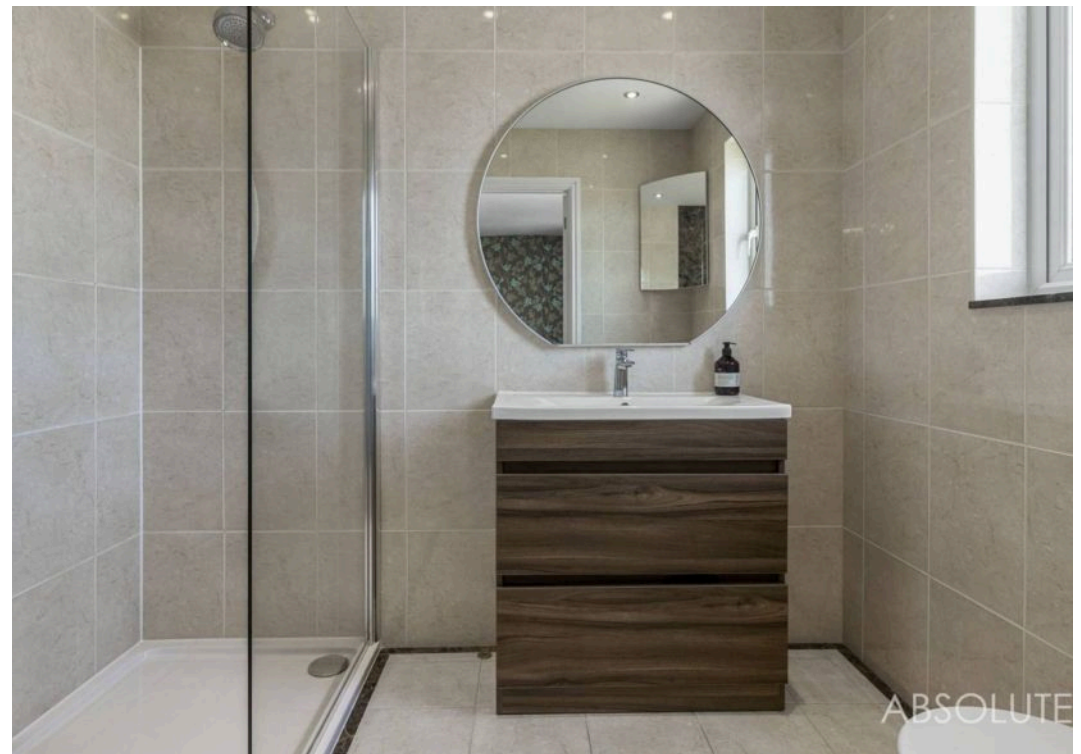
Tenure: Freehold



ABSOLUTE
SALES & LETTINGS



ABSOLUTE



Ground Floor

Approx. 121.3 sq. metres (1305.5 sq. feet)



First Floor

Approx. 78.7 sq. metres (846.7 sq. feet)



Total area: approx. 199.9 sq. metres (2152.1 sq. feet)





Absolute Sales & Lettings

Absolute Sales & Lettings Ltd, 13 Ilsham Road - TQ1 2JG

01803 214214

torquay@movewithabsolute.co.uk

movewithabsolute.co.uk/

