



Apt 26, Sachs Lodge Asheldon Road, Torquay – TQ1 2ER

Guide Price £250,000





Apartment 26

Sachs Lodge Asheldon Road, Torquay

Impressive development in tranquil Wellswood village, Sachs Lodge offers immaculate, modern apartments with sea views. Built by Churchill Retirement Living in 2017, Apartment 26 features high-spec fixtures, spacious rooms, and contemporary design.

Council Tax band: C

Tenure: Leasehold

EPC Energy Efficiency Rating: C

EPC Environmental Impact Rating: B

- A superbly presented top floor retirement apartment
- Highly sought after Wellswood location
- Brilliant sea views
- Lift rising to all floors
- Well maintained communal gardens and communal parking
- Use of high class communal facilities
- House manager and personal security system
- Modern fitted kitchen with integral appliances and a spacious lounge/dining room with Juliette balcony
- Generous sized bedroom
- Contemporary fitted shower room/wc



Apartment 26

Sachs Lodge Asheldon Road, Torquay

The property is located in the popular and sought after Wellswood area of Torquay, conveniently situated with its range of boutique shops, bistro restaurants and amenities. There are nearby bus routes on Babbacombe Road which connects to popular St Marychurch in one direction and Torquay town centre, marina and harbour in the other. An early inspection is essential to appreciate the size, position, quality and views the accommodation boasts.

Absolute Sales & Lettings

Absolute Sales & Lettings Ltd, 13 Ilsham Road - TQ1 2JG

01803 214214

torquay@movewithabsolute.co.uk

movewithabsolute.co.uk/



Approximate Gross Internal Area
48.2 sq m / 519 sq ft

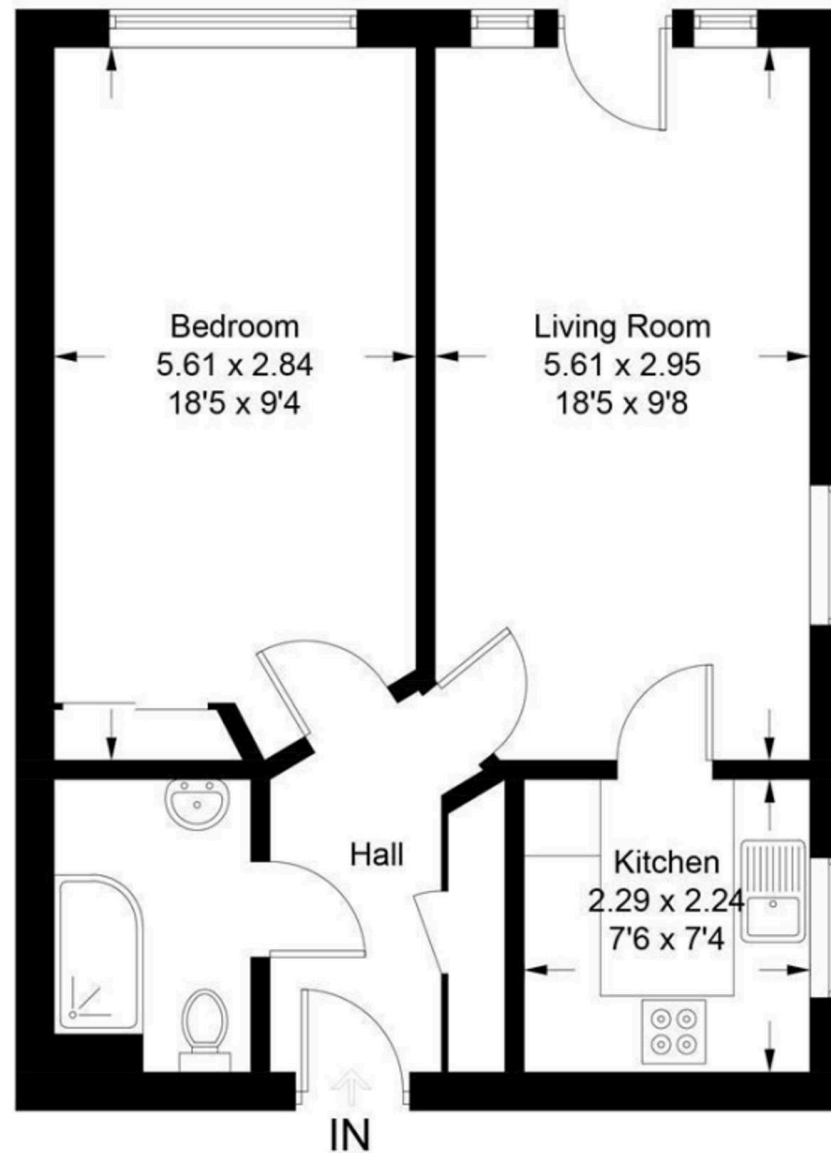


Illustration for identification purposes only, measurements are approximate, not to scale. floorplansUsketch.com © (1011144)

