



8 Merlin Way, Torquay - TQ2 7TE  
£215,000







## 8 Merlin Way

Torquay

2 bed semi-detached house in The Willows, close to Wren Retail Park. No onward chain, ideal first home. Needs modernisation. Spacious lounge, kitchen/dining, 2 bedrooms, en-suite, family bathroom. Rear garden, off-street parking for 2 cars.

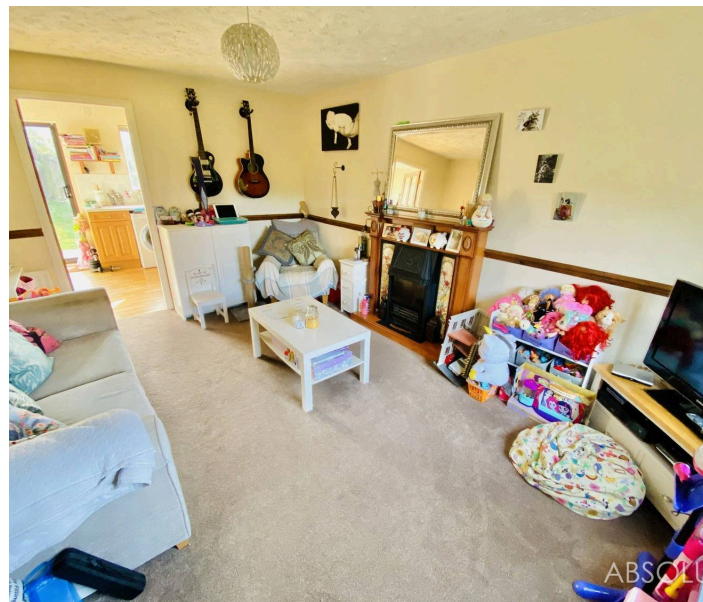
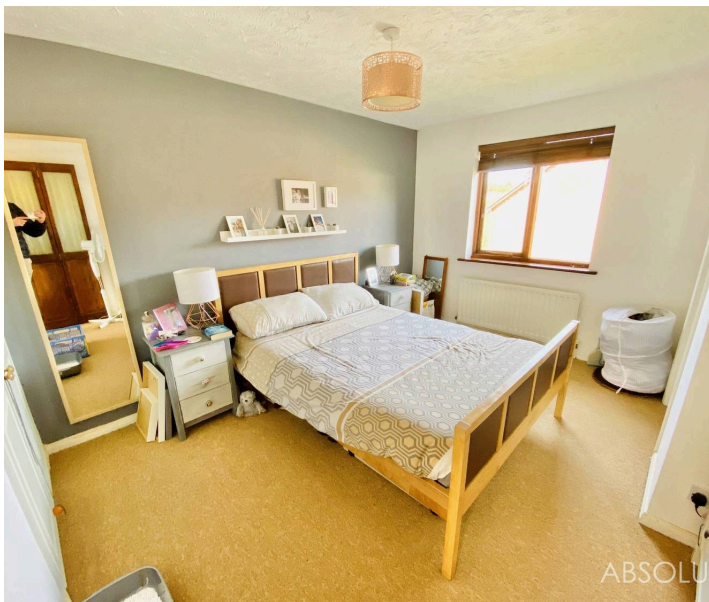
Council Tax band: C

Tenure: Freehold

EPC Energy Efficiency Rating:

EPC Environmental Impact Rating:

- Ideal first time purchase
- No onward chain
- Two bedroom semi-detached house in The Willows
- Off road parking for 2 cars
- kitchen/dining room
- two bathroom/shower rooms
- Within close proximity to The Willows shopping precinct
- Enclosed rear garden
- Good access to the link road towards Exeter, Plymouth and beyond
- Spacious lounge





# 8 Merlin Way

## Torquay

The property occupies a popular and sought after residential position within close proximity to Wren Retail Park, both Grammar Schools, Torbay Hospital and the ring road which connects to Newton Abbot, Exeter and beyond. Torquay town centre and sea front are both within approximately 2.5 miles distance with its array of shops, amenities and facilities. An internal inspection is highly recommended to appreciate the accommodation on offer.

### Absolute Sales & Lettings

Absolute Sales & Lettings Ltd, 13 Ilsham Road - TQ1 2JG

01803 214214

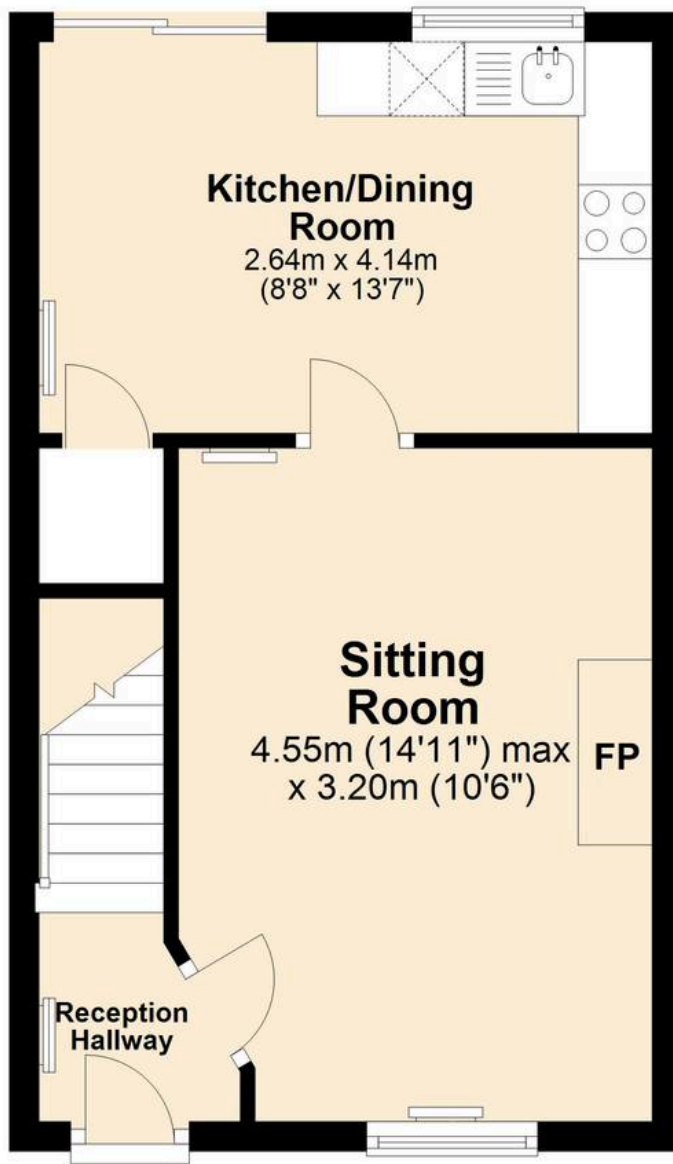
[torquay@movewithabsolute.co.uk](mailto:torquay@movewithabsolute.co.uk)

[movewithabsolute.co.uk/](http://movewithabsolute.co.uk/)

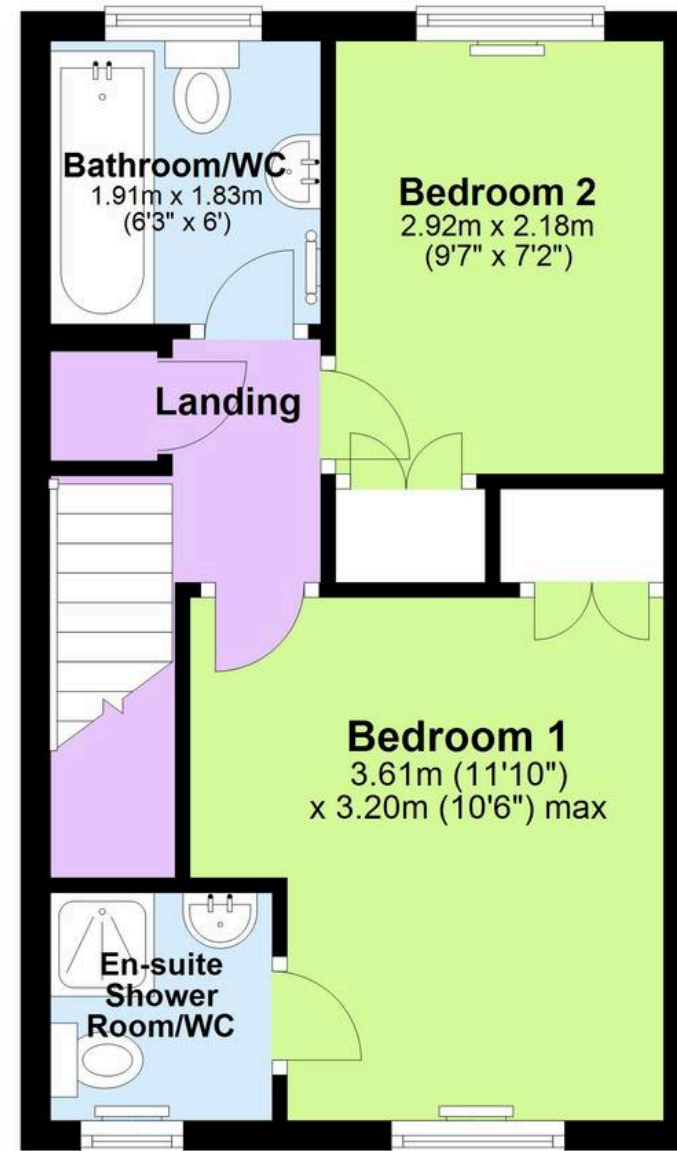




## Ground Floor



## First Floor



Approx  
Plan produced using PlanUp.

