



Flat 3, Castle Chambers, 147 Union Street – TQ1 4BT  
£189,950





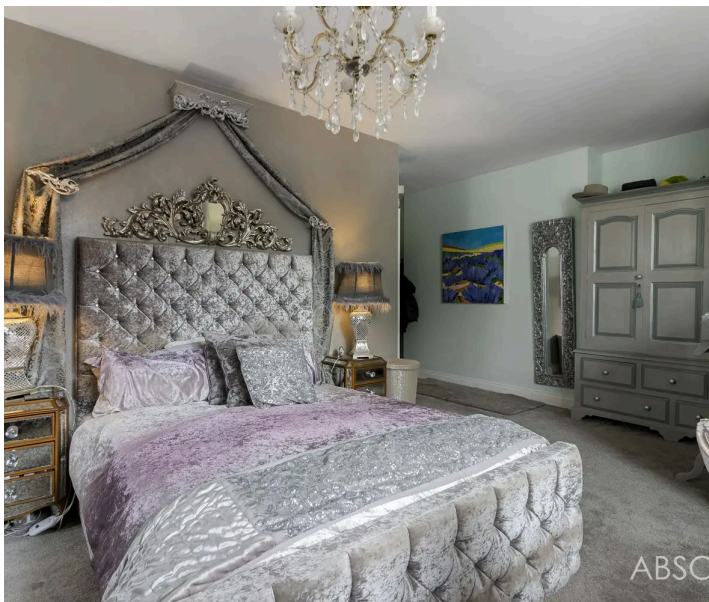


## Flat 3

### Castle Chambers, Torquay

Castle Chambers, one of Torquays most iconic Victorian Grade II listed buildings was originally built as a hospital in 1850, later being used as a county court, with the building being transformed into apartments in 2002.

Situated within the building, is this generous and extensively spacious second floor apartment with lift access offers plenty of charm and character throughout. The internal accommodation comprises of a spacious reception hallway, a generous sized lounge/diner with tall windows which fills the room with an abundance of light, a fitted kitchen with a utility area with elevated views over the Torquay, two good sized double bedrooms with the master suite having en-suite facilities and a bathroom/wc. This spacious and unique apartment would suit potential new buyers who are looking for an abundance of living space which you 'can lock and leave' in a convenient and central [location.To](#) the rear of the property is a secure allocated parking space which is accessed from the road by automated gates.





## Flat 3

### Castle Chambers, Torquay

Castle Chambers occupies an excellent and convenient position within the Tormohun Conservation Area just a stones throw array from Torquay town centre with its array of shops and facilities. Torquay harbourside and seafront are also just a short walk away with its enviable selection of exciting restaurants, bars, and shops. There are plenty of local bus links nearby which offer connections to the neighbouring towns of Paignton, Brixham, Newton Abbot and Dawlish as well as Torquay and Torre train stations which offer further connections to Newton Abbot, Exeter, Plymouth, London and beyond.

EPC – C

### Absolute Sales & Lettings

Absolute Sales & Lettings Ltd, 13 Ilsham Road – TQ1 2JG

01803 214214

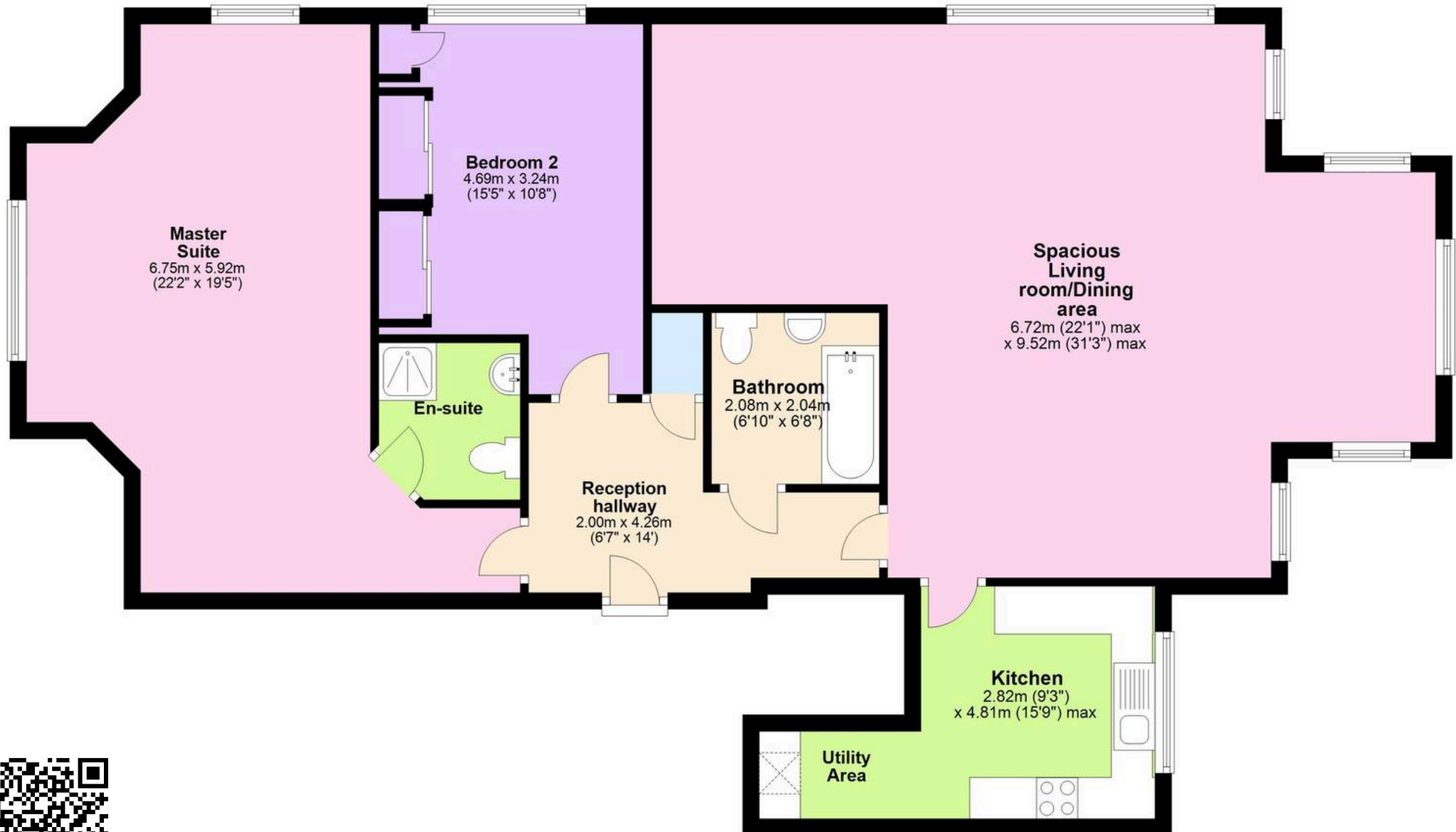
[torquay@movewithabsolute.co.uk](mailto:torquay@movewithabsolute.co.uk)

[movewithabsolute.co.uk/](http://movewithabsolute.co.uk/)



# Upper Floor with lift access

Approx. 116.1 sq. metres (1249.3 sq. feet)



Total area: approx. 116.1 sq. metres (1249.3 sq. feet)

Approx  
Plan produced using PlanUp.

