



13 Beechfield Place, Torquay – TQ2 8HX
£375,000

 **ABSOLUTE**
SALES & LETTINGS





13 Beechfield Place

Torquay, Torquay

Extended 1930s 3-bed detached house with driveway, garage, front and rear gardens. Includes bay windowed sitting room, separate dining area, modern kitchen/breakfast room, and decked area with hot tub. Close to amenities and schools.

Council Tax band: D

Tenure: Freehold

EPC Energy Efficiency Rating: D

EPC Environmental Impact Rating:



13 Beechfield Place

Torquay, Torquay

The property occupies a popular residential position within close proximity to local primary schools and shops on Barton Hill Road. There is easy access to Wren retail park and the bypass which connects to Newton Abbot, Exeter and beyond. Torquay town centre with its array of shops, facilities and amenities is approximately 2.5 miles distance.

Absolute Sales & Lettings

Absolute Sales & Lettings Ltd, 13 Ilsham Road - TQ1 2JG

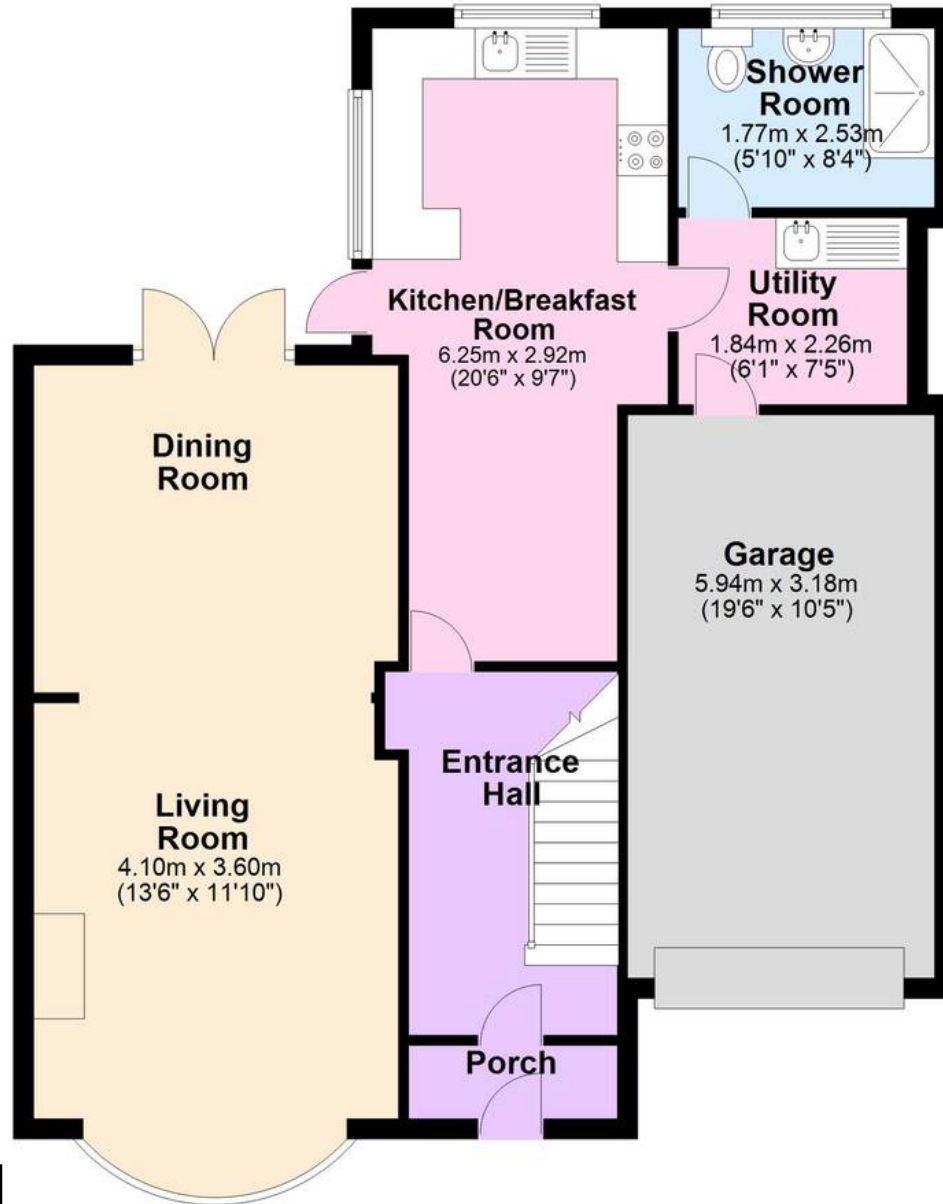
01803 214214

torquay@movewithabsolute.co.uk

movewithabsolute.co.uk/



Ground Floor



First Floor

