





2 Clifton Grove Old Torwood Road

Torquay, Torquay

Tucked away on the Old Torwood Road is this exquisite 6 bedroom terraced townhouse offers a unique opportunity to own a beautifully preserved Grade 2 listed Victorian property.

Spread across four floors, this elegant residence boasts approximately 3000 square feet of living space, incorporating 6 bedrooms, reception rooms, and 5 bathrooms. Its versatile layout lends itself seamlessly to a variety of living arrangements, making it ideal for both those seeking a home and income opportunity or multi-generational living.

Stepping inside, one is immediately struck by the grandeur of the property. As you ascend the grand central staircase, adorned with intricate detailing, your gaze is naturally drawn towards the graceful curvature leading you to the pinnacle of the property—a magnificent feature roof lantern that floods the heart of the home with a generous cascade of natural light, enhancing the sense of space and luxury throughout, flooding the interiors with natural light.

The interior features spacious and tall rooms, adorned with quintessential period details that evoke a sense of timeless charm and sophistication.



The lower ground floor has annex potential offering its own entrance accessed via the back of the property making it an ideal self-contained option. The reception rooms are tall and light filled rooms making the main living spaces a joy to sit in. The top 2 floors have excellently proportioned rooms which offer new owners flexibility for usage over years to come. Some of the smaller bedrooms would make ideal study/office spaces for home workers and the larger bedrooms equally perfect for a gym, snug or many other uses.

Outside, cottage-style gardens surround the property, offering a sheltered sunny retreat that is both charming and manageable. The tranquil setting provides a peaceful escape from the hustle and bustle of everyday life, allowing residents to unwind.

Boasting a prime location in close proximity to Wellswood and the harbourside, this townhouse offers the best of both worlds – a tranquil retreat within easy reach of all amenities and attractions. With no onward chain, the opportunity to own this exceptional property is not to be missed.

In summary, this 6-bedroom terraced townhouse represents a rare opportunity to own a piece of history in one of the most desirable locations in the area. With its timeless elegance, versatile layout, and convenient amenities, this property is sure to capture the hearts of those seeking a unique and prestigious home.



2 Clifton Grove Old Torwood Road

Torquay, Torquay

- An elegant and striking grade 2 listed victorian townhouse set upon 4 floors
- Excellent location within close proximity to Wellswood and the harbourside
- Lends itself to home and income or multi-generational living due to the set-up
- Stunning central staircase which curves towards the feature roof lantern
- Driveway parking for several vehicles
- Light filled hallways, spacious and tall rooms with plenty of quintessential features
- Cottage style gardens which are manageable but enjoy a sheltered sunny position
- No onward chain
- Spacious Sitting Room, Large kitchen dining room and utility
- 6 Bedrooms, Reception rooms, 5 bathrooms and approx 3000 sq ft of accommodation





ABSOLUTE



ABSOLUTE



ABSOLUTE



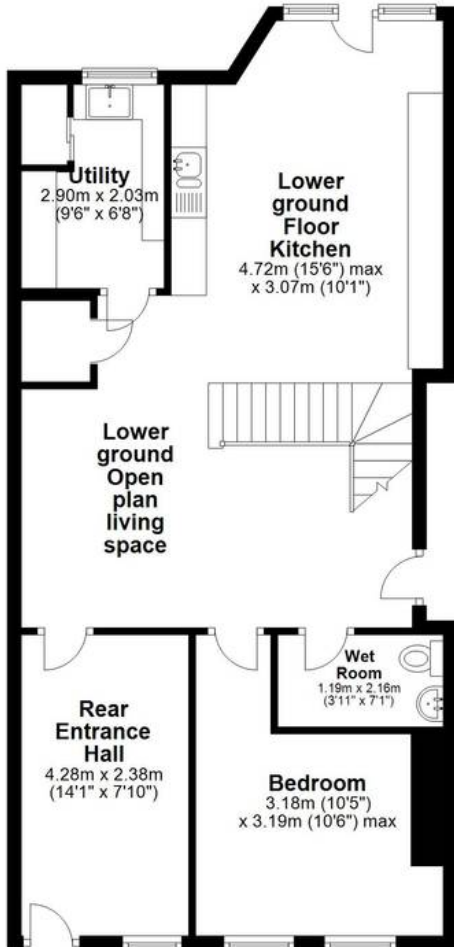
ABSOLUTE



ABSOLUTE

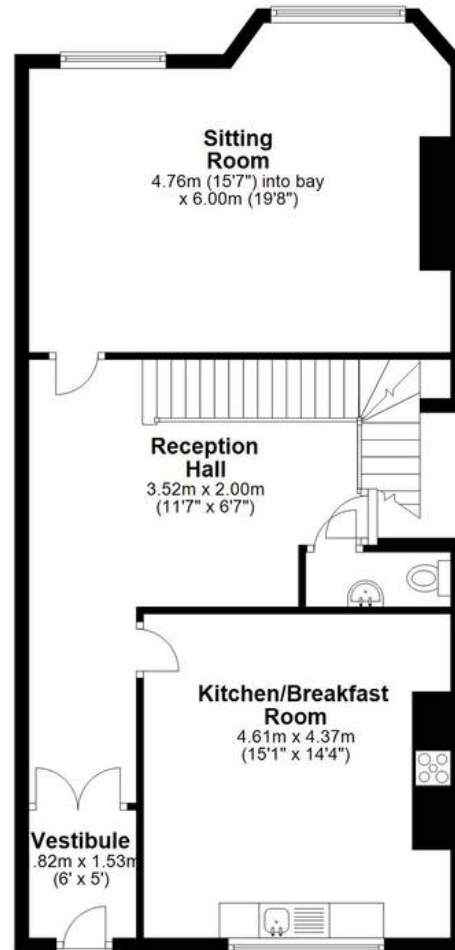
Basement

Approx. 73.0 sq. metres (786.1 sq. feet)



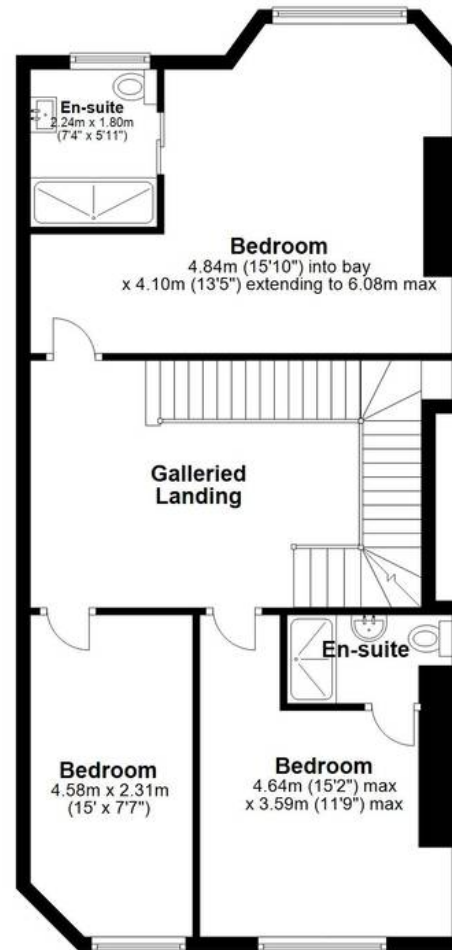
Ground Floor

Approx. 72.0 sq. metres (774.7 sq. feet)



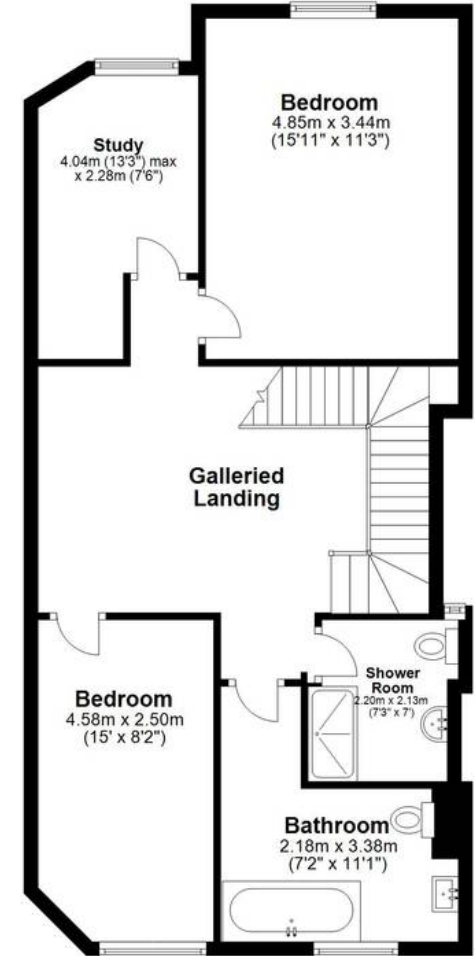
First Floor

Approx. 74.1 sq. metres (797.7 sq. feet)

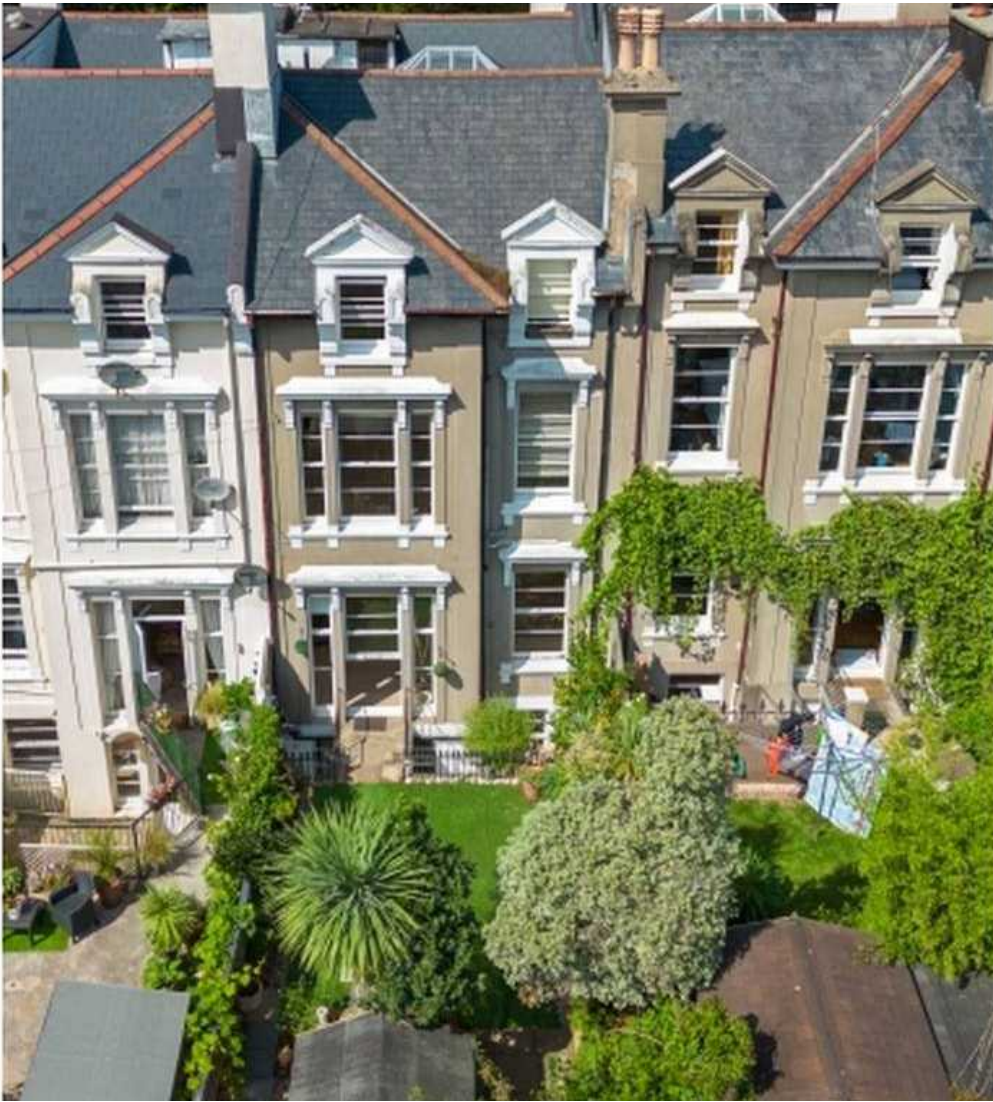


Second Floor

Approx. 73.4 sq. metres (789.6 sq. feet)



Total area: approx. 292.5 sq. metres (3148.2 sq. feet)



Absolute Sales & Lettings

Absolute Sales & Lettings Ltd, 13 Ilsham Road - TQ1 2JG

01803 214214

torquay@movewithabsolute.co.uk

movewithabsolute.co.uk/

