





## Mowbray Asheldon Road

Torquay, Torquay

Introducing a distinguished opportunity in the form of an exquisite period residence, this four-bedroom property boasts a blend of timeless elegance and contemporary convenience.

The ground floor presents a versatile layout featuring a generously proportioned lounge/dining room, ideal for entertaining guests or unwinding with loved ones. Functionality is key in the heart of the home where you find a quality modern fitted kitchen, complete with integrated appliances. The presence of a downstairs cloakroom/WC provides added convenience for residents and visitors alike.

The ground floor also boasts the inclusion of a well-appointed bedroom, offering flexibility for use as a guest suite, private office, or additional living space as desired. Ascend the staircase to the first floor, where three further bedrooms await, each exuding a sense of serenity and comfort. The principal bedroom stands out with the added luxury of an en suite shower room/WC, providing a private oasis.



## REAR GARDEN

The rear garden includes a patio area and raised garden which is level and laid largely to lawn. The garden is enclosed by timber fencing. The garden can be accessed from the lounge/diner.

## OFF STREET

1 Parking Space

To the front of the property there is tarmac hardstanding allowing for off road parking. A wrought iron gate gives access down the side of the property to the rear garden.



# Mowbray Asheldon Road

Torquay, Torquay

The property occupies a much sought after residential position within a short stroll from Wellswood Village with its array of shops, amenities and facilities. It is within approximately 1 and a quarter miles from Torquay town centre, harbour side and deep water marina.

Council Tax band: D

Tenure: Freehold

- An impressive 4 bed period residence
- Offered with vacant possession
- Fully renovated to a high standard
- Downstairs cloakroom/WC
- Enclosed rear garden
- Spacious lounge/dining room
- Quality modern fitted kitchen with integrated appliances
- Ground floor bedroom
- Three further first floor bedrooms, principal with en suite shower room/WC
- Family bathroom/WC



ABSO

ABSO



ABSOLUTE



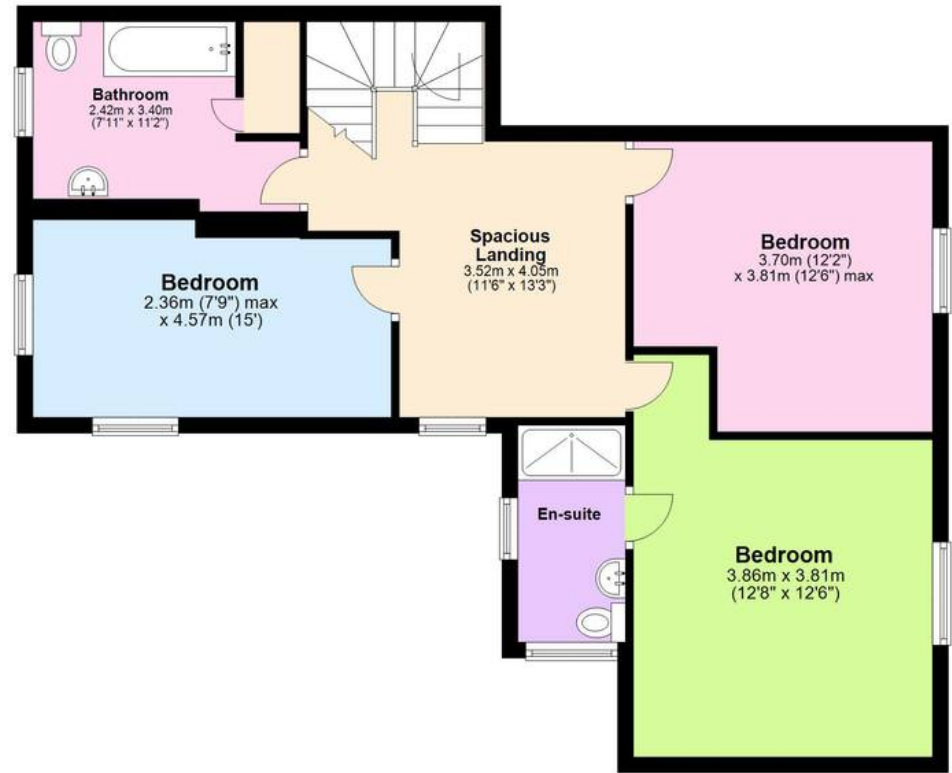
### Ground Floor

Approx. 94.2 sq. metres (1014.3 sq. feet)



### First Floor

Approx. 69.3 sq. metres (746.2 sq. feet)



Total area: approx. 163.6 sq. metres (1760.5 sq. feet)

Approx  
Plan produced using PlanUp.





## Absolute Sales & Lettings

Absolute Sales & Lettings Ltd, 13 Ilsham Road - TQ1 2JG

01803 214214

[torquay@movewithabsolute.co.uk](mailto:torquay@movewithabsolute.co.uk)

[movewithabsolute.co.uk/](http://movewithabsolute.co.uk/)

