



20 Lydwell Park Road, Torquay - TQ1 3TQ

Guide Price **£525,000**





20 Lydwell Park Road

Torquay

Exceptional detached bungalow with panoramic sea views in prime location. Three double bedrooms, principal with en suite, elegant living spaces, conservatory, under house rooms, double garage, driveway parking and well-maintained garden. Perfect blend of comfort and style for coastal living.

Council Tax band: F

Tenure: Freehold

EPC Energy Efficiency Rating: C

EPC Environmental Impact Rating:

- Spacious detached bungalow enjoying superb sea views in a sought after residential position
- Integral double garage
- Double width driveway parking
- Useful under house rooms and storage that can be accessed from the main property
- Good size garden
- Fitted kitchen/breakfast room with built in appliances
- Three double bedrooms, principal with en suite shower room/WC
- Family bathroom/WC



20 Lydwell Park Road

Torquay

The property occupies a much sought after corner plot position enjoying fabulous sea views from the rear elevation. Wellwood Village with its array of boutique shops, facilities and restaurants is within approximately half a miles distance. Torquay town centre and depp water marina are both within approximately 1.5 miles.

Absolute Sales & Lettings

Absolute Sales & Lettings Ltd, 13 Ilsham Road - TQ1 2JG

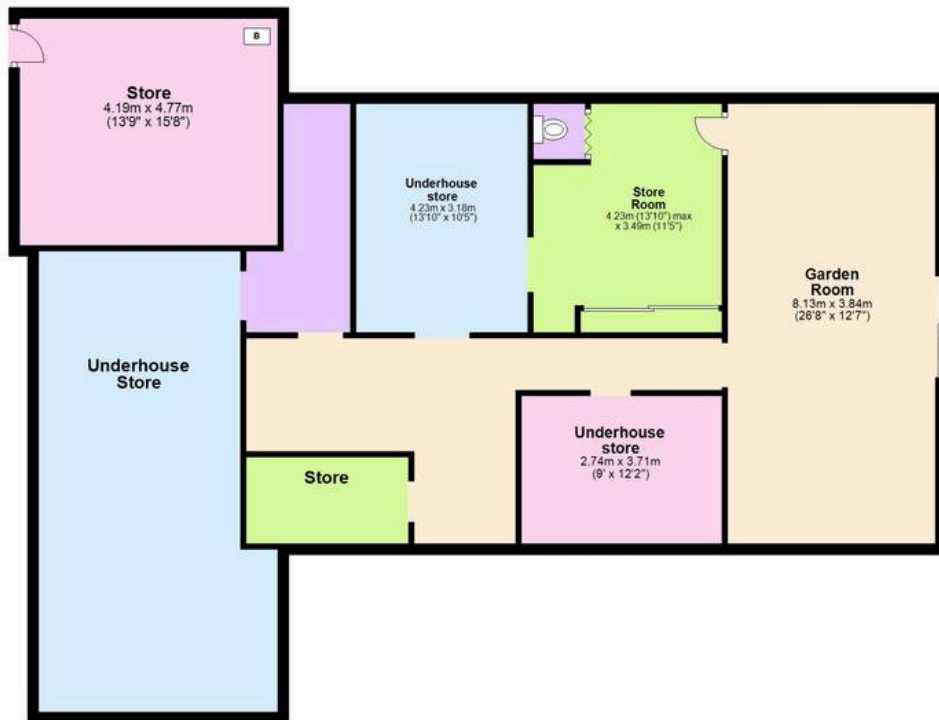
01803 214214

torquay@movewithabsolute.co.uk

movewithabsolute.co.uk/



Garden Floor
Approx. 71.4 sq. metres (768.7 sq. feet)



Ground Floor
Approx. 176.7 sq. metres (1901.8 sq. feet)



Total area: approx. 248.1 sq. metres (2670.5 sq. feet)

Approx
Plan produced using PlanUp.