



1 Somers Lodge Chilcote Close, Torquay - TQ1 4QT

Torquay

Guide Price £325,000



1 Somers Lodge Chilcote Close , Torquay

Guide Price - £325,000 - £350,000

Please note, all photos are of plot 6

Stunning in design and crafted to perfection, this new development comprises of six contemporary apartments tailored for modern living. Each unit is meticulously finished to the highest specification, boasting an open-plan living area seamlessly integrating quality modern fitted kitchens with built-in appliances. The appeal of the property is further enhanced by two double bedrooms, the main featuring its very own en suite shower room/WC, alongside a separate shower room/WC for added convenience. Perfect for those seeking a lock-up-and-leave lifestyle, this turnkey property sits adjacent to St Marychurch precinct, offering both convenience and a serene setting. Additionally, each apartment comes ready with fitted floor coverings and features enclosed balconies that showcase picturesque open views. The development offers a secure haven, complete with electric gates, undercroft parking, and a turning circle, ensuring that every aspect of comfort and safety is accounted for.



Outside, residents can benefit from the convenience of under-cover parking, adding an extra layer of security and ease of access to the property. Enjoy the luxury of arriving home to a well-maintained and secure environment, where every detail has been thoughtfully designed for the utmost convenience and peace of mind. This is the ideal opportunity to own a contemporary apartment in a desirable location, offering a harmonious blend of urban living and natural beauty, all within a modern and sophisticated setting. Don't miss your chance to experience the epitome of contemporary living in this exclusive development.

Balcony

Balcony enjoying open views

ALLOCATED PARKING

1 Parking Space

The property is accessed via a communal front door with telephone security entrance system. To the side is automated gated access which leads to undercroft parking and has allocated parking for 1 car. A turning circle gives easy in and out access.



1 Somers Lodge Chilcote Close

, Torquay

Somers Court is set in the heart of the St Marychurch area of Torquay with local transport links, shops, cafes and pubs on the doorstep. A short level walk away are the beautiful Babbacombe Downs where there are cafes with sea views, pubs and the Babbacombe theatre. Oddicombe beach with its beach café and the famous Cary Arms are easily accessed from the Downs by footpath or via the famous cliff railway. Torquay Golf Club, bowls and tennis are available nearby also. St Marychurch is approximately 2.5 miles from Torquay which retains the feel of a traditional seaside town with its stunning coastline, iconic palm trees, sandy beaches and historic pier, all enhanced by the international marina and a delightful array of shops, galleries and cafes with bars and restaurants along the waterfront

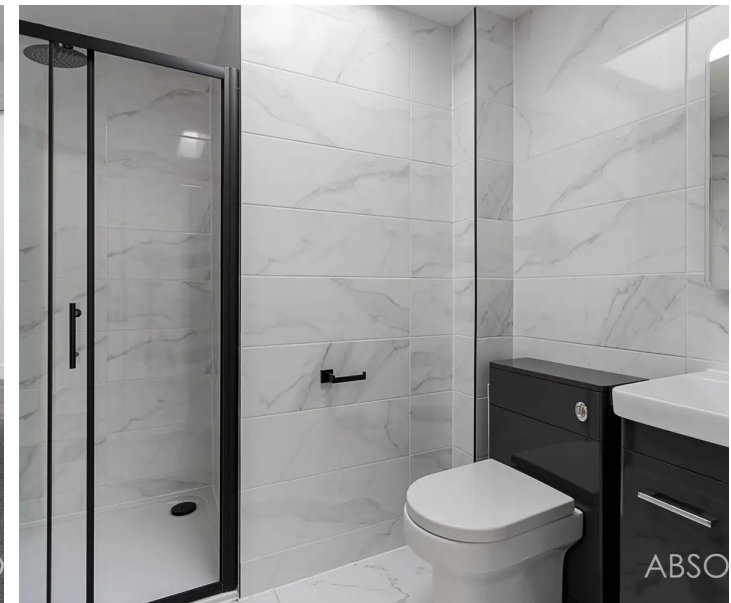
Tenure: Leasehold

- Stunning new development of 6 contemporary apartments finished to a high specification
- Located adjacent to St Marychurch precinct
- Electric gated development with undercroft parking and turning circle
- Turnkey ready with fitted floor coverings
- Ideal lock up and leave
- Enclosed balconies enjoying open views
- Open plan living space with quality modern fitted kitchens and built in appliances
- Two double bedrooms with the main having an en



room/WC

lower room/WC





ABSOLUTE



ABSOLUTE



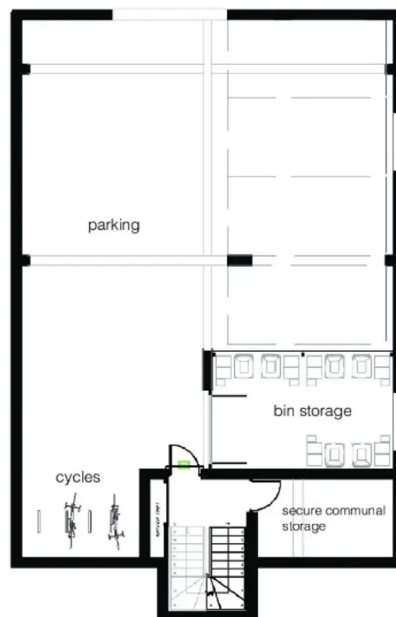
ABSOLUTE



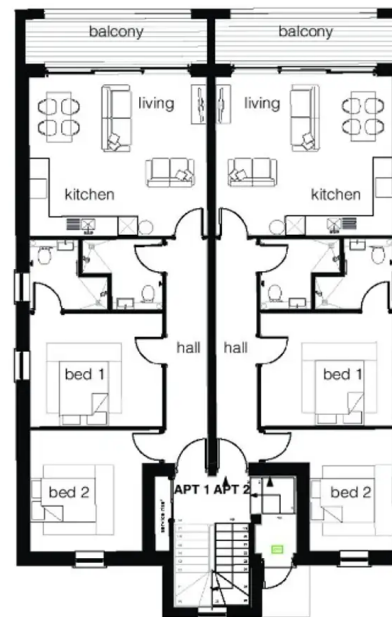
ABSOLUTE



Somers Luxury Apartments
St Mary Church Road
Torquay



ground floor



first floor plan

APARTMENT 1 83m²
APARTMENT 2 81m²



Images are not to scale. All dimensions indicated are approximate and furniture layout is for illustrative purposes only.





Absolute Sales & Lettings

Absolute Sales & Lettings Ltd, 13 Ilsham Road - TQ1 2JG

01803 214214

torquay@movewithabsolute.co.uk

movewithabsolute.co.uk/

