



35 Haldon Road, Torquay - TQ1 2LX

Guide Price **£699,950**





35 Haldon Road

Torquay,

A most spacious four bedroom detached, chalet style bungalow located in the highly sought after area of Wellswood, offered to the market with ample driveway parking, wonderful sea views from the rear elevation and a well maintained garden with a lovely sun terrace.

Council Tax band: G

Tenure: Freehold

- Highly sought after location
- Attractively landscaped front and rear gardens and enclosed sun terrace with open and some sea views
- Ample driveway parking, single garage and uPVC double glazing and gas central heating
- Modern fitted kitchen and breakfast room with built in appliances
- Study area and useful under house storage area
- Two further bedrooms on the first floor, one with en suite shower room/WC
- Sitting room and separate dining area
- Two ground floor double bedrooms both with en suite facilities
- Further ground floor shower room/WC



35 Haldon Road

Torquay, Torquay

Highlands occupies a much sought after residential position within the highly sought after area of Wellswood and is approximately 3/4 mile distance from Wellswood village with its array of boutique shops, cafes, amenities and facilities and is also within approximately 1 mile of the stunning Meadfoot beach and Ilisham green, perfect for those who enjoy coastal walks, beautiful scenery or water sports. The lively Torquay town centre, sea front and deep water marina are only a short distance away, with their enviable array of restaurants, cafes and shops. Torquay and Torre train stations are also within close proximity, which offer excellent connections to Newton Abbot, Exeter and beyond. An early inspection is highly recommended to appreciate the size, condition and position the accommodation boasts.

Absolute Sales & Lettings

Absolute Sales & Lettings Ltd, 13 Ilisham Road - TQ1 2JG

01803 214214

torquay@movewithabsolute.co.uk

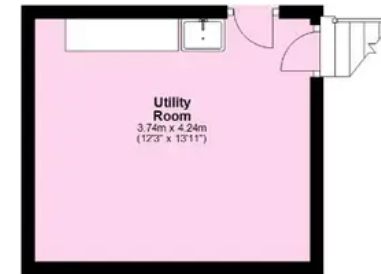
movewithabsolute.co.uk/



Ground Floor
Approx. 150.3 sq. metres (1618.3 sq. feet)



Garden Floor
Approx. 15.9 sq. metres (170.8 sq. feet)



First Floor
Approx. 56.8 sq. metres (611.1 sq. feet)

