



19 Glendinning Avenue, Weymouth, DT4 7QF
Offers Over £180,000 Leasehold


MARTIN&CO

Glendinning Avenue, Weymouth

2 Bedrooms, 2 Bathroom

Offers Over £180,000

- Top Floor Apartment
- Beautifully Presented
- Two Double Bedrooms
- Ensuite
- Open Plan Living Area
- Parking
- Close to Facilities and Beach



Score	Energy rating	Current	Potential
92+	A		
81-91	B		
69-80	C	76 C	78 C
55-68	D		
39-54	E		
21-38	F		
1-20	G		

The graph shows this property's current and potential energy rating.



Two Spacious Double Bedrooms

The apartment boasts two generously sized double bedrooms, offering ample space for relaxation. The master suite includes a luxurious ensuite bathroom, designed with contemporary fixtures and a touch of sophistication.

Open Plan Living Space

The heart of this home is its open-plan kitchen, lounge, and dining area. This bright and airy space has been thoughtfully designed to maximise light and functionality. The kitchen features high-end appliances, sleek countertops, and plenty of storage, while the lounge and dining areas provide a cosy yet stylish setting for entertaining or unwinding.

Modern Bathrooms

In addition to the ensuite, the property includes a well-appointed main bathroom. Both spaces are fitted with premium fittings and finishes, offering a spa-like ambiance for ultimate comfort.

Parking Convenience

The property benefits from dedicated parking, ensuring easy access for residents and a practical solution for living near the bustling seafront.

Location

This apartment's prime location is one of its standout features. Nestled close to Weymouth's stunning seafront, you can enjoy leisurely strolls along the beach, vibrant cafes, and local attractions. Essential amenities, including shops, restaurants, and transport links, are all within easy reach, making this property a rare find in such a sought-after area.

Why This Apartment?

Whether you're seeking a chic coastal retreat or an investment in a highly desirable area, this top-floor apartment offers it all. Its combination of modern design, practical amenities, and an unbeatable location makes it an opportunity not to be missed.

Get in Touch

Don't miss your chance to own this stunning property. Contact us today to arrange a viewing and discover the potential of this exceptional home.

Lease Information

959 years remaining on the lease

Service Charge £85 per month

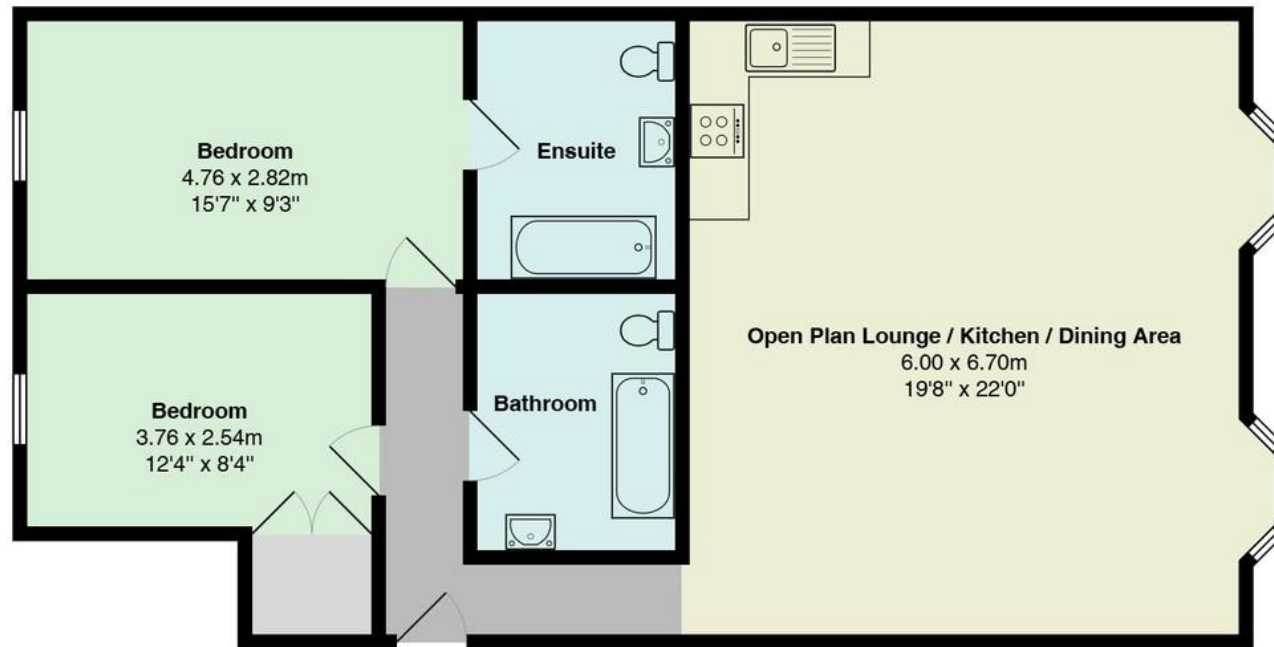
Ground Rent £25 per month

No pets or holidays lets are permitted on the lease

We recommend that all lease information is confirmed via a legal representative.







All measurements are approximate and for display purposes only

Martin & Co Weymouth

2 St Thomas Street • Weymouth • DT4 8EW
T: 01305775504 • E: weymouth@martinco.com

01305775504

<http://www.martinco.com>



Accuracy: References to the Tenure of a Property are based on information supplied by the Seller. The Agent has not had sight of the title documents. A Buyer is advised to obtain verification from their Solicitor. Items shown in photographs including but not limited to carpets, fixtures and fittings are not included unless specifically mentioned within the sales particulars. They may however be available by separate negotiation. Buyers must check the availability of any property and make an appointment to view before embarking on any journey to see a property. No person in the employment of the agent has any authority to make any representation about the property, and accordingly any information given is entirely without responsibility on the part of the agents, sellers(s) or lessors(s). Any property particulars are not an offer or contract, nor form part of one. **Sonic / Laser Tape:** Measurements taken using a sonic / laser tape measure may be subject to a small margin of error. **All Measurements:** All Measurements are Approximate. **Services Not tested:** The Agent has not tested any apparatus, equipment, fixtures and fittings or services and so cannot verify that they are in working order or fit for the purpose. A Buyer is advised to obtain verification from their Solicitor or Surveyor.