

Arnolds | Keys



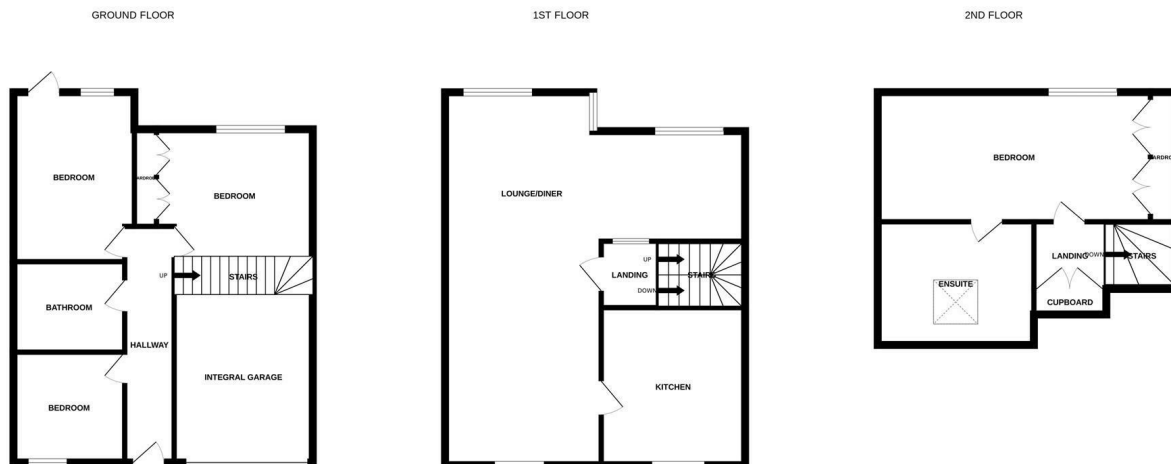
19 Bure Close, Wroxham, Norfolk, NR12 8RU

£1,200 PCM

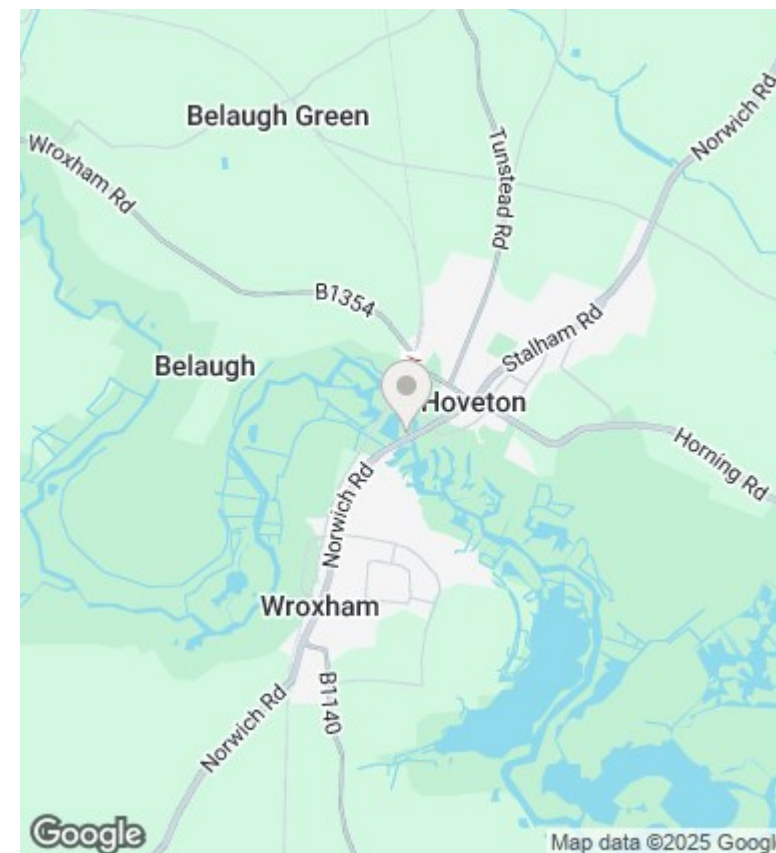
- River Views and 3 or 4 Bedrooms
- En Suite and Family Bathroom
- Gas Central Heating
- EPC Rating C
- Accommodation Arranged Over 3 Floors
- Garage
- Double Glazing
- Open Plan Lounge / Diner
- Courtyard Garden
- Popular Broadland Village

25 King Street, Norwich, Norfolk, NR1 1PD
01603 216812

lettings@arnoldskeys.com
www.arnoldskeys.com



Whilst every attempt has been made to ensure the accuracy of the floorplan contained here, measurements of doors, windows, rooms and any other items are approximate and no responsibility is taken for any error, omission or mis-statement. This plan is for illustrative purposes only and should be used as such by any prospective purchaser. The services, systems and appliances shown have not been tested and no guarantee as to their operability or efficiency can be given.
Made with Metropix ©2023



Directions

Viewings

Viewings by arrangement only. Call 01603 216812 to make an appointment.

Council Tax Band

E

EPC Rating:

C

Energy Efficiency Rating		Current	Potential
Very energy efficient - lower running costs			
(92 plus) A			
(81-91) B			
(69-80) C			
(55-68) D			
(39-54) E			
(21-38) F			
(1-20) G			
Not energy efficient - higher running costs			
		70	83
England & Wales		EU Directive 2002/91/EC	

25 King Street, Norwich, Norfolk, NR1 1PD
01603 216812

lettings@arnoldskeys.com
www.arnoldskeys.com