

Arnolds | Keys



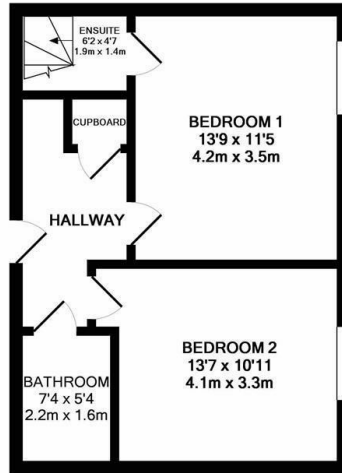
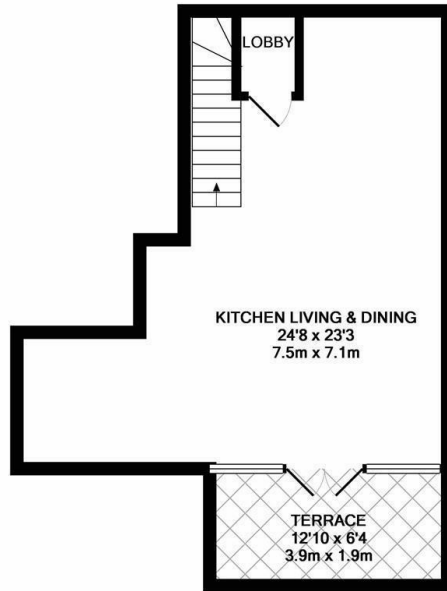
Flat 56 Eastgate House (and car parking space 1) 122 Thorpe

£1,395 PCM

- Duplex Apartment
- Ensuite and Family Bathroom
- Gas Central Heating and Double Glazing
- ROOF TERRACE WITH STUNNING VIEWS
- PARKING SPACE
- Lift Access
- 2 Double Bedrooms
- Large Open Plan Living Room and Kitchen
- Great Location For Access To The Train Station, Riverside and The City

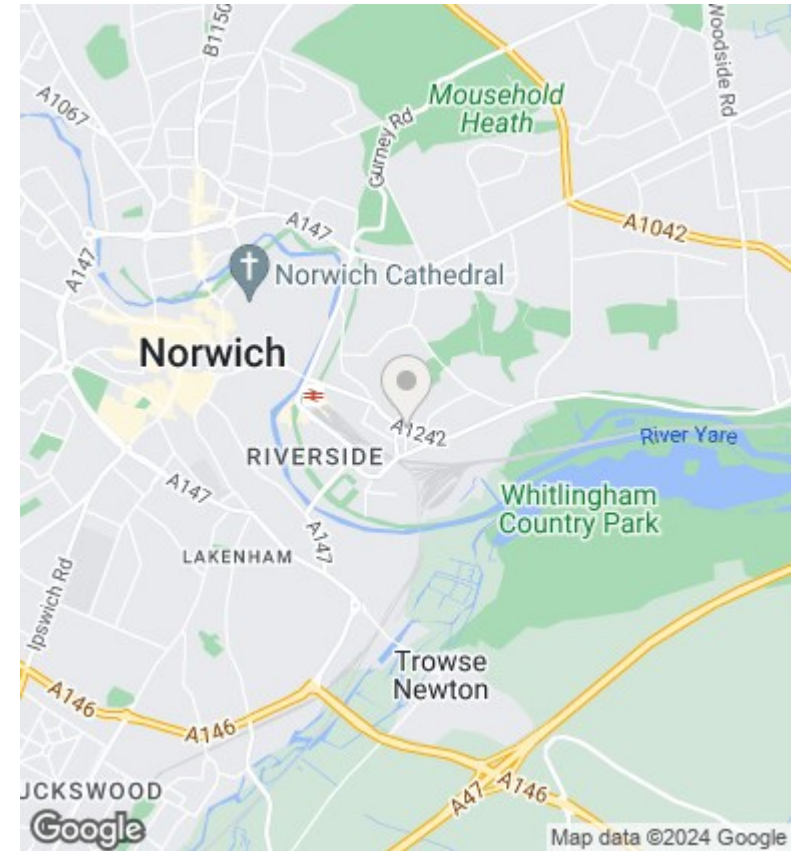
25 King Street, Norwich, Norfolk, NR1 1PD
01603 216812

lettings@arnoldskeys.com
www.arnoldskeys.com



TOTAL APPROX. FLOOR AREA 864 SQ.FT. (80.3 SQ.M.)

Whilst every attempt has been made to ensure the accuracy of the floor plan contained here, measurements of doors, windows, rooms and any other items are approximate and no responsibility is taken for any error, omission, or mis-statement. This plan is for illustrative purposes only and should be used as such by any prospective purchaser. The services, systems and appliances shown have not been tested and no guarantee as to their operability or efficiency can be given.
Made with Metropix ©2018



Directions

Viewings

Viewings by arrangement only. Call 01603 216812 to make an appointment.

Council Tax Band

A

EPC Rating:

B

Energy Efficiency Rating		Current	Potential
Very energy efficient - lower running costs			
(92 plus) A			
(81-91) B		83	83
(69-80) C			
(55-68) D			
(39-54) E			
(21-38) F			
(1-20) G			
Not energy efficient - higher running costs			
England & Wales		EU Directive 2002/91/EC	