

Arnolds | Keys



Pinecroft House, 23 Uplands Park, Sheringham, NR26 8NE

£1,350 Per Calendar Month

- Three Bedroom Detached House
- Living Room/Dining Room with wood burner
- Family Bathroom with separate shower cubicle
- Council Tax Band: F
- Large established rear garden with a summer house, storage cupboards and several wood stores
- Fitted Kitchen with appliances and seating area
- Single garage and ample parking
- Entrance Hall
- Cloakroom
- EPC Rating: D

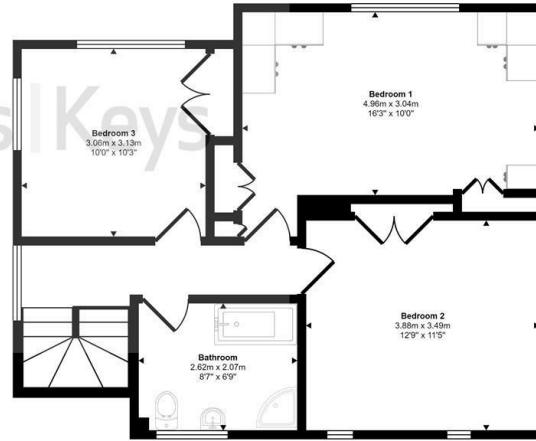
25 King Street, Norwich, Norfolk, NR1 1PD
01603 216812

lettings@arnoldskeys.com
www.arnoldskeys.com

Approx Gross Internal Area
118 sq m / 1269 sq ft

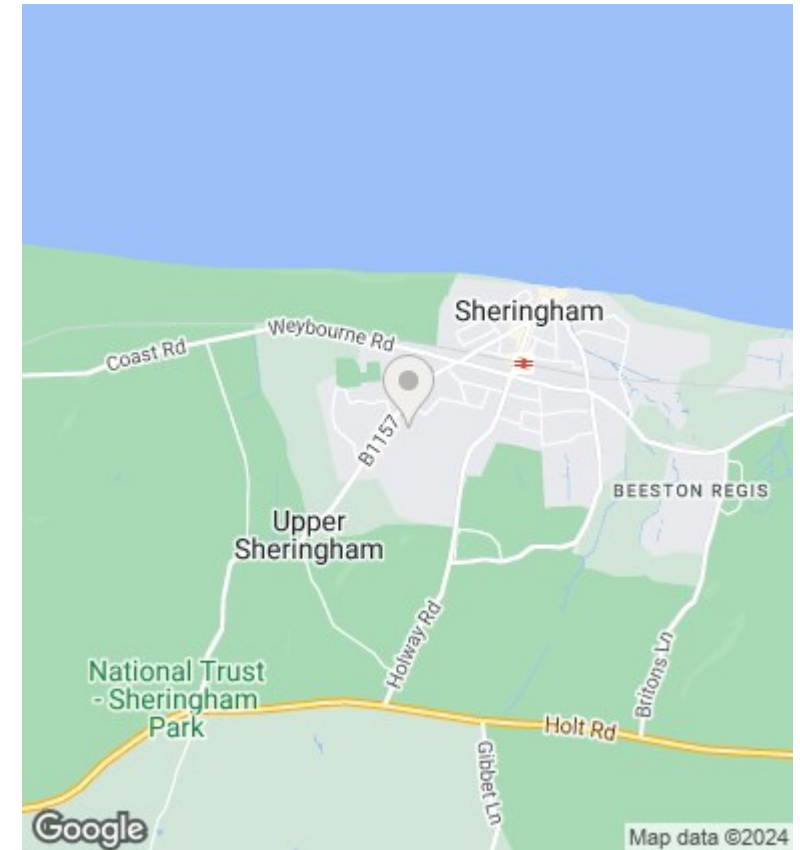


Ground Floor
Approx 62 sq m / 662 sq ft



First Floor
Approx 56 sq m / 607 sq ft

This floorplan is only for illustrative purposes and is not to scale. Measurements of rooms, doors, windows, and any items are approximate and no responsibility is taken for any error, omission or mis-statement. Icons of items such as bathroom suites are representations only and may not look like the real items. Made with Made Snappy 360.



Directions

Viewings

Viewings by arrangement only. Call 01603 216812 to make an appointment.

Council Tax Band

F

EPC Rating:

D

Energy Efficiency Rating		Current	Potential
Very energy efficient - lower running costs			
(92 plus) A			
(81-91) B			
(69-80) C			78
(55-68) D		58	
(39-54) E			
(21-38) F			
(1-20) G			
Not energy efficient - higher running costs			
England & Wales		EU Directive 2002/91/EC	