

Arnolds | Keys



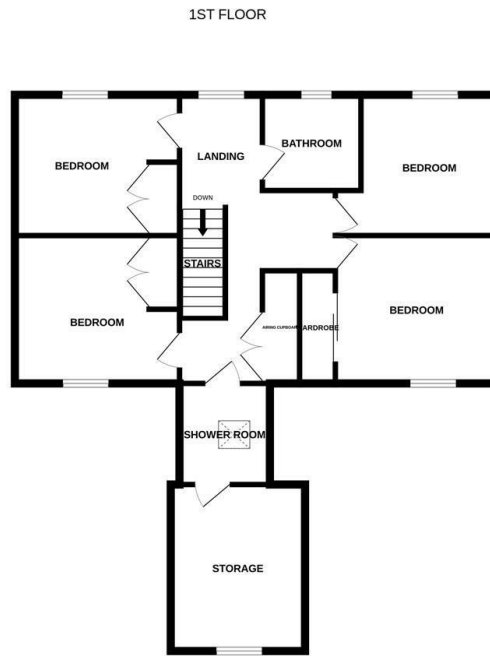
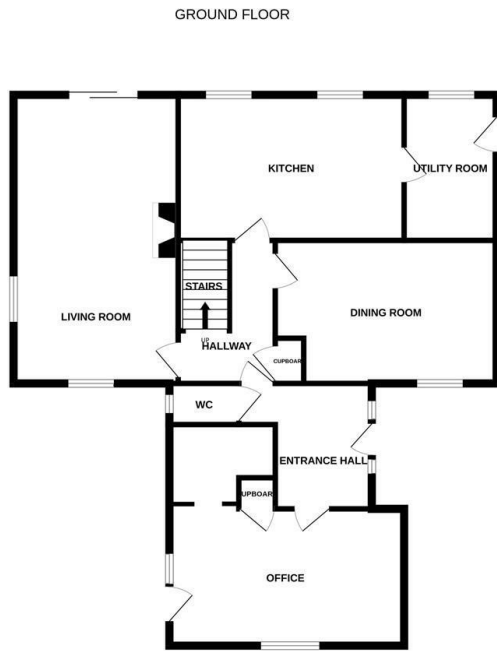
The Rectory, Pound Lane, Litcham, Kings Lynn, Norfolk, PE32

£1,050 PCM

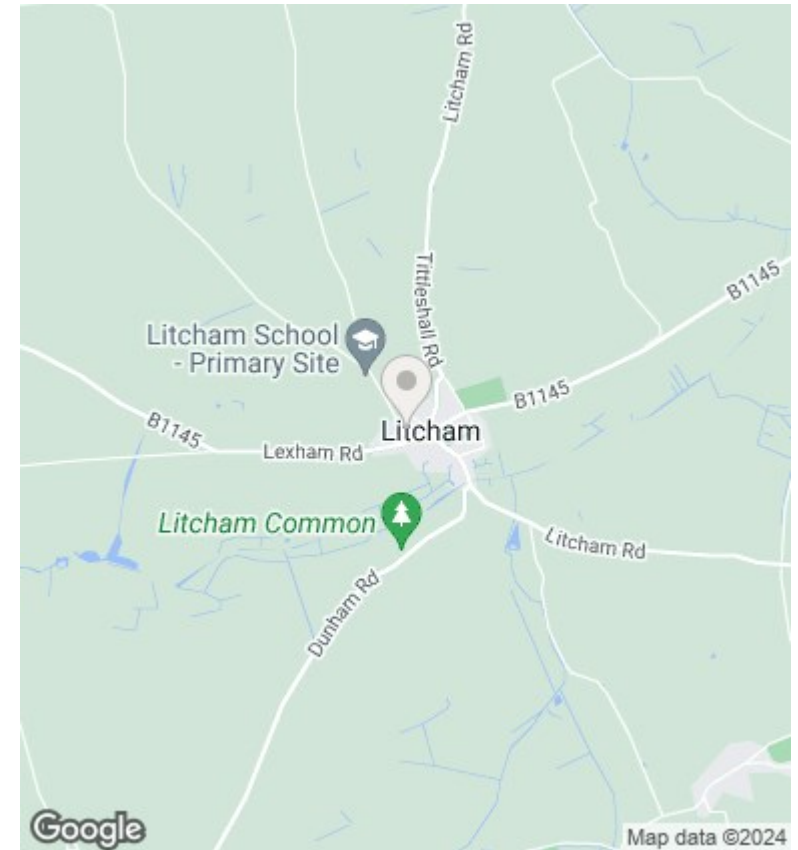
- 4 Bedroom Detached House
- Kitchen and Utility Room
- Good Size Garden
- 6 Month Let
- Entrance Hall and Office / Reception
- Bathroom and Separate Shower Room
- Oil Central Heating And Double Glazing
- Lounge and Separate Dining Room
- Double Garage and Ample Parking
- EPC Rating: D

25 King Street, Norwich, Norfolk, NR1 1PD
01603 216812

lettings@arnoldskeys.com
www.arnoldskeys.com



Whilst every attempt has been made to ensure the accuracy of the floorplan contained here, measurements of doors, windows, rooms and any other items are approximate and no responsibility is taken for any error, omission or mis-statement. This plan is for illustrative purposes only and should be used as such by any prospective purchaser. The services, systems and appliances shown have not been tested and no guarantee as to their operability or efficiency can be given.
Made with Metropix ©2024



Directions

Viewings

Viewings by arrangement only. Call 01603 216812 to make an appointment.

Council Tax Band

F

EPC Rating:

D

Energy Efficiency Rating		Current	Potential
Very energy efficient - lower running costs			
(92 plus) A			
(81-91) B			
(69-80) C			
(55-68) D		58	70
(39-54) E			
(21-38) F			
(1-20) G			
Not energy efficient - higher running costs			
England & Wales		EU Directive 2002/91/EC	