

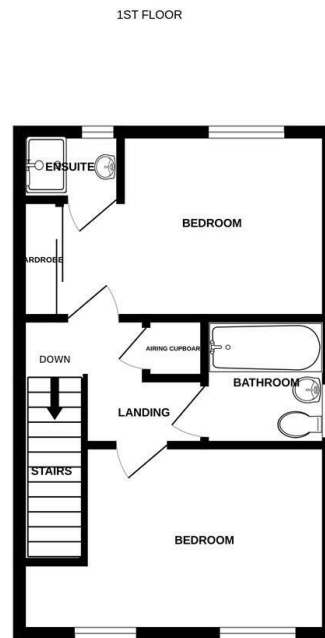
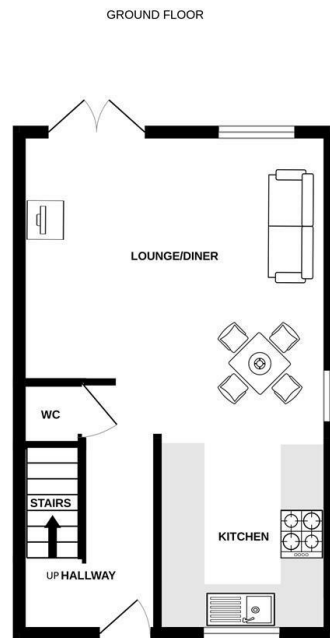
Arnolds | Keys



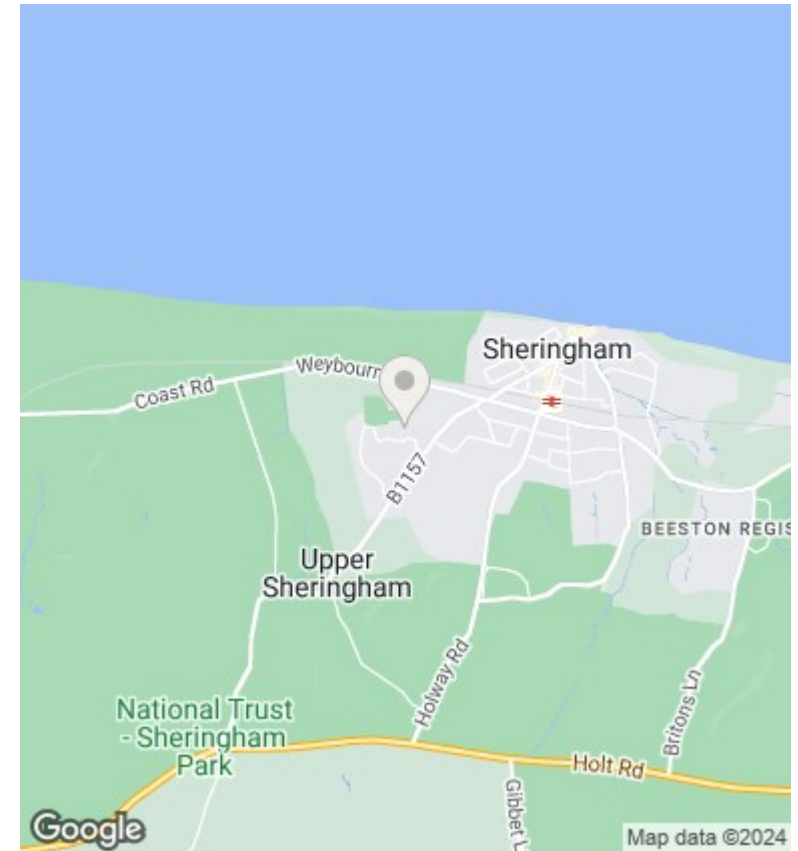
35 Woodhouse Close, Sheringham, Norfolk, NR26 8AX

£1,050 Per Calendar Month

- 2 Double Bedrooms
- En-suite to Principal Bedroom
- Enclosed Rear Garden
- Open Plan Living Room / Dining Room.
- Family Bathroom With Over Bath Shower
- 2 Driveway Car Parking Spaces.
- Fitted Kitchen with Integrated Appliances
- Cul-De-Sac Location Overlooking Playing Fields
- EPC Rating B



Whilst every attempt has been made to ensure the accuracy of the floorplan contained here, measurements of doors, windows, rooms and any other items are approximate and no responsibility is taken for any error, omission or mis-statement. This plan is for illustrative purposes only and should be used as such by any prospective purchaser. The services, systems and appliances shown have not been tested and no guarantee as to their operability or efficiency can be given.
Made with Metroplan ©2024



Directions

Viewings

Viewings by arrangement only. Call 01603 216812 to make an appointment.

Council Tax Band

B

EPC Rating:

B

Energy Efficiency Rating		Current	Potential
Very energy efficient - lower running costs			
(92 plus) A			95
(81-91) B		84	
(69-80) C			
(55-68) D			
(39-54) E			
(21-38) F			
(1-20) G			
Not energy efficient - higher running costs			
England & Wales		EU Directive 2002/91/EC	