



STRATTON OAK ESTATES

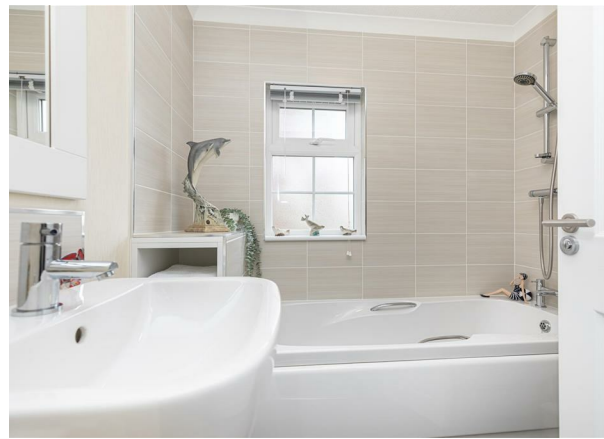
46 Tall Trees Matchams Lane, Christchurch, BH23

6TT

£190,000

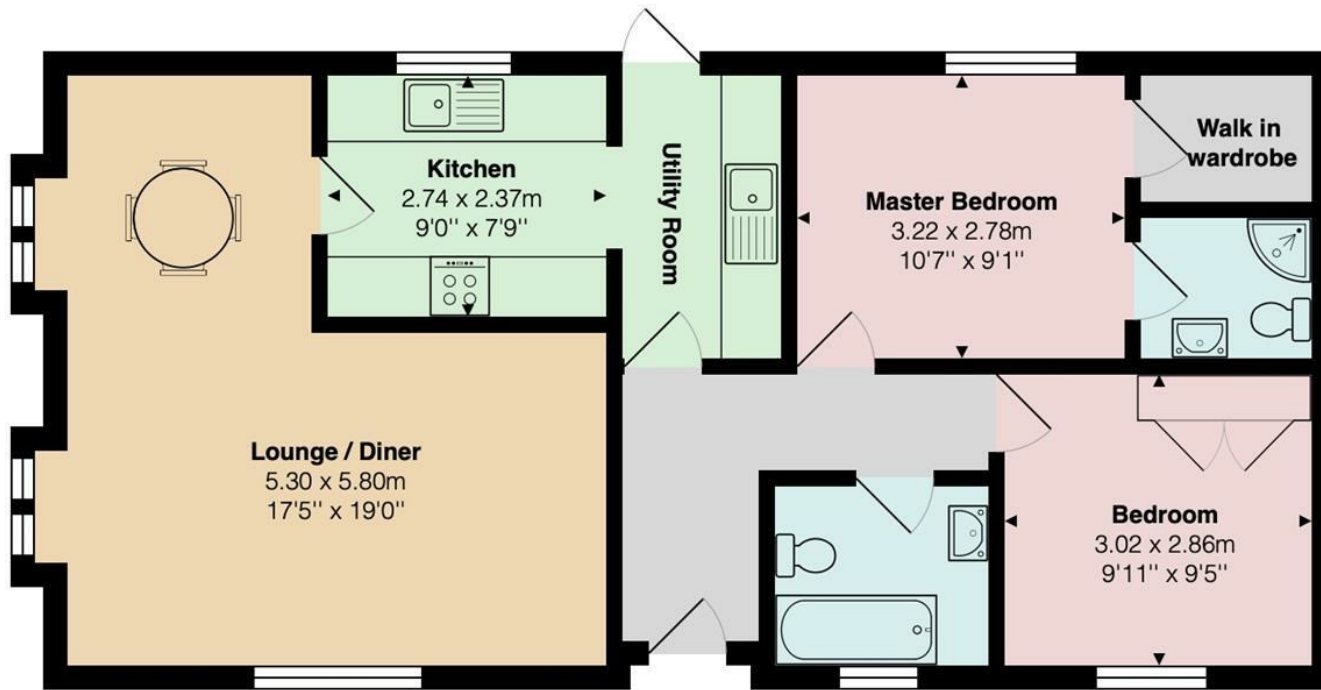
This IMMACULATEDLY PRESENTED 2 bedroom, 2 bathroom home is just 4 years old and resides in the sought after Tall Trees Development on Matchams Lane, Hurn. The home has 12 MONTH RESIDENCY and offers spacious living with a handy utility off the back of the kitchen, a must see to full appreciate.

- Located in the sought after Tall Trees Development with 12 month residency.
- Tall Trees is specially reserved for the over 45's.
- One of the newest properties on the development being just 4 years old.
- 2 bedrooms with master having ensuite shower room & walk in wardrobe.
- Large lounge / diner with triple aspect.
- Modern kitchen with integrated appliances and additional utility room.
- Property offered with raised Patio area and low maintenance garden.
- Block paved drive for 1 - 2 vehicles.



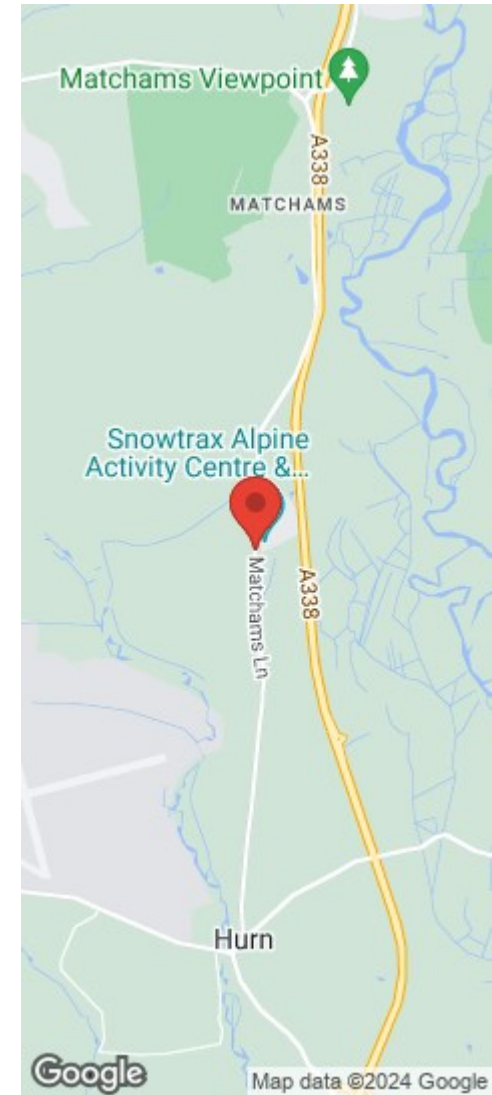


STRATTON OAK ESTATES



Total Area: 71.3 m² ... 767 ft²

All measurements are approximate and for display purposes only



Whilst these details are thought to be correct, their accuracy cannot be guaranteed and do not form part of any contract. It should be noted that we have not tested any fixtures, fittings, equipment, apparatus or services, therefore we cannot verify that they are in working order or fit for purpose. Solicitors should be used to confirm that any moveable items described within these details are in fact part of the sale agreement. While we try to ensure measurements are correct they are not guaranteed and purchasers are advised to take their own measurements before ordering any fixtures or fittings.



STRATTON OAK ESTATES

Floor 1, The Chocolate Box 8 - 10 Christchurch Road, Dorset, Bournemouth, BH1 3NA
 info@strattonoakestates.com | T. 01202 237580 | www.strattonoakestates.com