

Selby, Yorkshire, YO8



£275,450



Bungalow-style park homes are perfect for those looking for a detached, easy to maintain, bungalow style retirement property. Each home features comfortable furniture and a modern kitchen with integrated appliances. Most homes feature two bedrooms and two bathrooms, including an en-suite to the master bedroom. Each home comes with an 8'x10' shed.

The 45-acre park is well located in Yorkshire. Right next door to Selby Golf Course, only 4 miles from the historic market town of Selby, which in a recent Halifax survey was voted "top spot" in Yorkshire when it comes to quality of life. A safe and secure gated community with a village green, nature area and on-site fishing.

Age restriction: Over 50s

Pet friendly: Yes

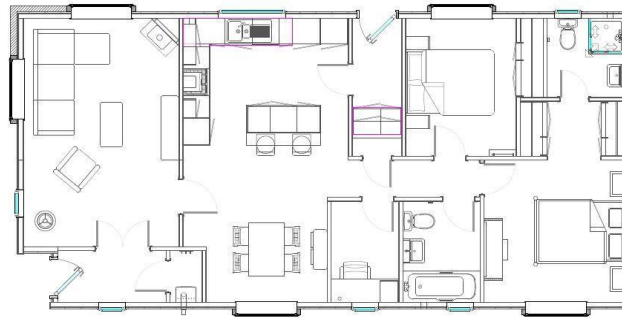
Site fees: £203 per month

Residential licence

Stock images have been used, the home on-site may vary.

Key Features

- Brand new home
- CCTV Security System
- Garden Shed
- Over 50's
- Part Exchange
- Pet-friendly
- Plots Available
- Private
- Gated Development
- Residential Park



House to sell?

Contact Quickmove for a free, no-obligation Part-Exchange valuation on this home. Enjoy a hassle-free move, with no estate agents' fees or solicitors to pay. You even get to keep the keys to your existing property for 2 weeks after completion, so you can move out at your leisure.

CONTACT US

01793 840917

advice@quickmoveproperties.co.uk

