

Clacton-On-Sea, Essex, CO16



Price as listed



This brand new, modern-furnished Omar Image (40'x20') luxury park home is perfect for those looking for a detached, easy to maintain, bungalow-style property. The home features a large kitchen and dining room, separate living room, two double bedrooms, an en suite and family bathroom. The landscaped exterior boasts a garden space and a driveway.

This 12-month leisure development has a brand new phase with a range of homes and plots available. It is beautifully set out with manicured gardens and communal spaces. The development is gated, with on-site CCTV to provide extra security. This development is ideally located in the Essex countryside, just a few miles from the seaside town of Clacton-on-Sea, with easy connections to London. Other local towns nearby include Great Bentley, Frinton-on-Sea, Walton and the larger town of Colchester.

Age restriction: Over 50s

Pet friendly: Yes

Site fees (at time of listing): £3,265 per year

Leisure license

Key Features

- 12 Month Leisure Licence
- Brand new home
- CCTV Security System
- Exceptionally High Specification
- Fully Furnished
- Over 50s
- Part Exchange Available
- Pet-Friendly
- Private
- Gated Development

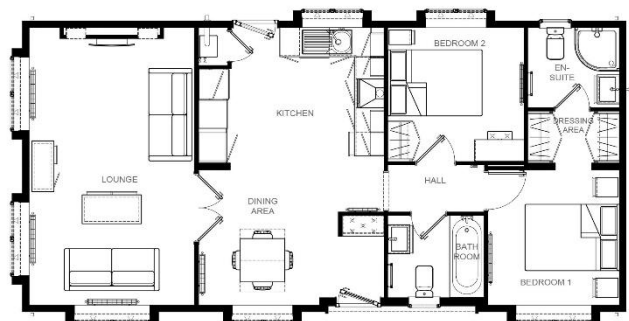


Image 40' x 20' 2DB



CONTACT US

01793 840917

advice@quickmoveproperties.co.uk

Quickmove
PROPERTIES

