

Milford-On-Sea, Hampshire, SO41



Price as listed



This pre-owned, modern Wessex Allure (45'x20') luxury park home is perfect for those looking for a detached, easy-to-maintain, bungalow-style property. The home is located on a sought-after development and has stunning, uninterrupted views across Sturt Pond Nature Reserve. The home has a modern open plan kitchen, dining and living area, a snug, two double bedrooms, a shower room and a bathroom. The exterior of the home has a garden space, shed and large decking to enjoy the wonderful views from, an ideal spot for bird watching.

This park is a fabulously-located luxury bungalow development for the over 45's. Located within the thriving village of Milford-On-Sea which hosts a fine selection of shops, award winning restaurants and a vibrant village green where you can enjoy a wide selection of events throughout the year. The development epitomises a relaxed lifestyle within a community where you can relax in your own private garden.

Age restriction: Over 45s

Pet friendly: Yes

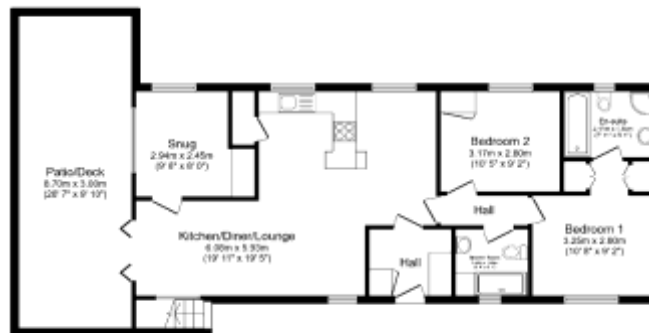
Site fees (at time of listing): £294.07 per month

House to sell?

Hassle-free Property Part-Exchange is available from Quickmove Properties, with no estate agent fees, no solicitor's fees and no market uncertainty.

Key Features

- Coastal Location
- Garden space
- Over 45s
- Part Exchange available
- Pet friendly
- Pre-owned park home
- Sought after residential park
- Stunning views
- Two double bedrooms
- Waterside property



Floor Plan
Floor area 79.9 sq.m. (960 sq.ft.)



CONTACT US

01793 840917

advice@quickmoveproperties.co.uk

Quickmove
PROPERTIES



The Property
Ombudsman